

OPERATION MANUAL

MLX55



Note: Owner and operator MUST read and understand the operating instructions before using the Hand Pallet Truck.

Date : 2014.07

MLX55 SERVICE CHECK LIST

OPERATION

- A. With control lever in lift position pump the handle a few strokes to lift load
- B. Move control lever to neutral position to free handle of all pumping force
- C. To lower load, pull the control lever until the load starts lowering or the selected lowering speed has been reached

JACK NOT LIFTING

- If truck has been turned on side for shipping, air lock is the problem. Pull control handle to neutral position and pump handle fast 8 - 10 strokes. This will clear air lock - Return control handle to pump position

CHECKING OIL LEVEL

- With the truck in the lowered position on a level surface, remove filler screw, oil should be level with filler screw hole, if not add the proper oil. Check filler screw seal before replacing.

RECOMMENDED HYDRAULIC OIL

- AW32 Standard Hydraulic Oil. This "All-Temp" Fluid is rated to -35 degrees F

POSSIBLE SOURCES OF TROUBLE AND HOW TO CORRECT THEM

CONDITION	CHECK POINT	ACTION
Pump not operating with control lever in lift position	Oil Level low suction valve not closing	A. See 'Check Oil Level' B. Adjust screw in valve actuating lever in anti-clockwise direction - 1 turn C. Remove plug No. XN314 and extract valving. Blow out oil port. Check 'O' ring seals for nicking or distortion. Reassemble. NOTE: Turn truck on side to prevent oil spillage for 'C'.
Pump lifts but won't lower	Out of adjustment	D. Adjust screw in clockwise direction one turn, check lowering speed under load and adjust to suit.
Pump lifts and lowers with pumping action	Check valve not closing	Remove plug No. XN314 and spring. Seat check valve ball which is next to spring with brass or copper punch and hammer lightly. Replace spring and plug.
No neutral position	Out of adjustment	Operation 'D'.
Lowering too slow	Out of adjustment	Operation 'D'.
	Oil too thick	Drain and refill with oil as specified.

PALLET TRUCK INSTRUCTION MANUAL

Mobile and ECO Pallet Trucks are lifting devices featuring easy, flexible, reliable and safe operation suitable for transportation of loads in such applications as warehouses, manufacturing facilities, shopping malls and workshops.

In order to help you use this piece of equipment correctly, please read the instruction manual carefully before operating. Unauthorized operation is forbidden. Failure to adhere to these points can result in damage to the truck and/or injury to the operator.

ATTENTION:

- 1) Overloading is not permitted. All operation should be conducted within the rated load capacity.
- 2) Never stand or sit on the pallet truck while in operation.
- 3) Never put your hands, feet or any other part of your body underneath the frame assembly.
- 4) Make sure that loads are evenly distributed on the forks. Do not concentrate loads at one point or load one fork more than the other. If the load is shorter than the forks, the load should always be placed at the back of the forks against the bulkhead. Never lift loads with the tips of the forks as this may damage the pallet truck.
- 5) Never move the truck while raising or lowering the forks.
- 6) Do not allow your pallet truck to drop from one level to another. A drop of one inch more than doubles the load during impact which can result in bending or breaking components of the truck.
- 7) Always ensure that the load is stable and secure before moving to eliminate the possibility of load shifting.
- 8) When not in use, the forks should be lowered to avoid potential injury.
- 9) The pallet truck is designed to be used on a flat and hard surface. A unit with a brake is recommended for applications involving a slope.

OPERATION:

- Push the inner handle down to the low position. Pump the handle to raise the forks.
- Place the inner handle in the middle (neutral) position to maneuver the pallet truck with free handle movement.

- Pull the inner handle to the raised position to lower the forks. Loads can be lowered gently by “feathering” the release handle position. Models equipped with foot pedal release levers can be lowered by pushing down on the lever with your foot. Ensure that your other foot is clear of the pallet truck when lowering.

MAINTENANCE:

- 1) All pivot points are equipped with permanently lubricated bushings and bearings. To increase bearing life, it is recommended that a few drops of light machine oil be applied at every pivot point every 6 months.
- 2) The thrust plate is equipped with a grease zerk which should be greased every 6 months.
- 3) The hydraulic system is maintenance free - do not add hydraulic oil unless there is, or has been a leak.
- 4) Use premium HVI hydraulic oil or equal (Recommended: AW32 Standard Hydraulic Oil). Other oils, fluids or solvents may damage the hydraulic system.
- 5) If additional oil is required, add (with forks in lowered position). Remove the Oil filler plug, refill with hydraulic oil to hole level, replace filler plug.

TROUBLESHOOTING:

- 1) If the pump does not lift normally, pull up the inner handle (release position) and hold while pumping the handle several times. Release and resume normal operation.
- 2) If trouble continues please contact an authorized dealer or the manufacturer.

Fig 1 - Handle Assembly

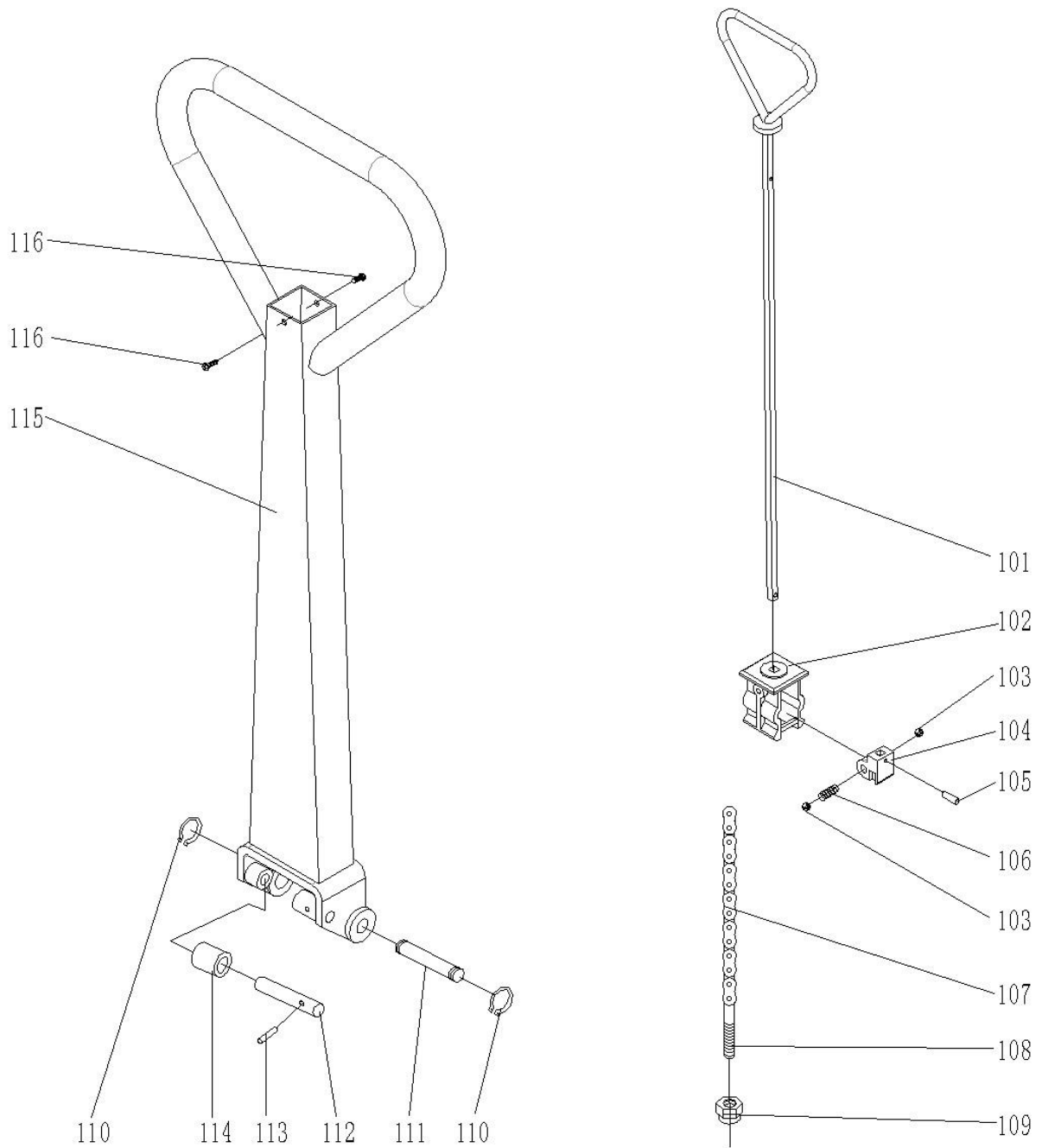


Fig 1 - Handle Assembly

No.	Mobile Part #	Item	Quantity
	12XN1	Complete Handle Assembly	1
101	12XN101	Handle	1
102	12XN102	Assembling rack	1
103	12XN103	Steel ball	2
104	12XN104	Gear shift block	1
105	12XN105	Elastic Pin	1
106	12XN106	Spring	1
107	12XN107	Chain	1
108	12XN108	Short connecting rod	1
109	12XN109	Nut	1
110	12XN110	Retainer Ring	2
111	12XN111	Shaft	1
112	12XN112	Shaft	1
113	12XN113	Elastic Pin	1
114	12XN114	Pressure Roller	1
115	12XN115	Draw bar	1
116	12XN116	Bolt	2

Fig 2 - Frame assembly

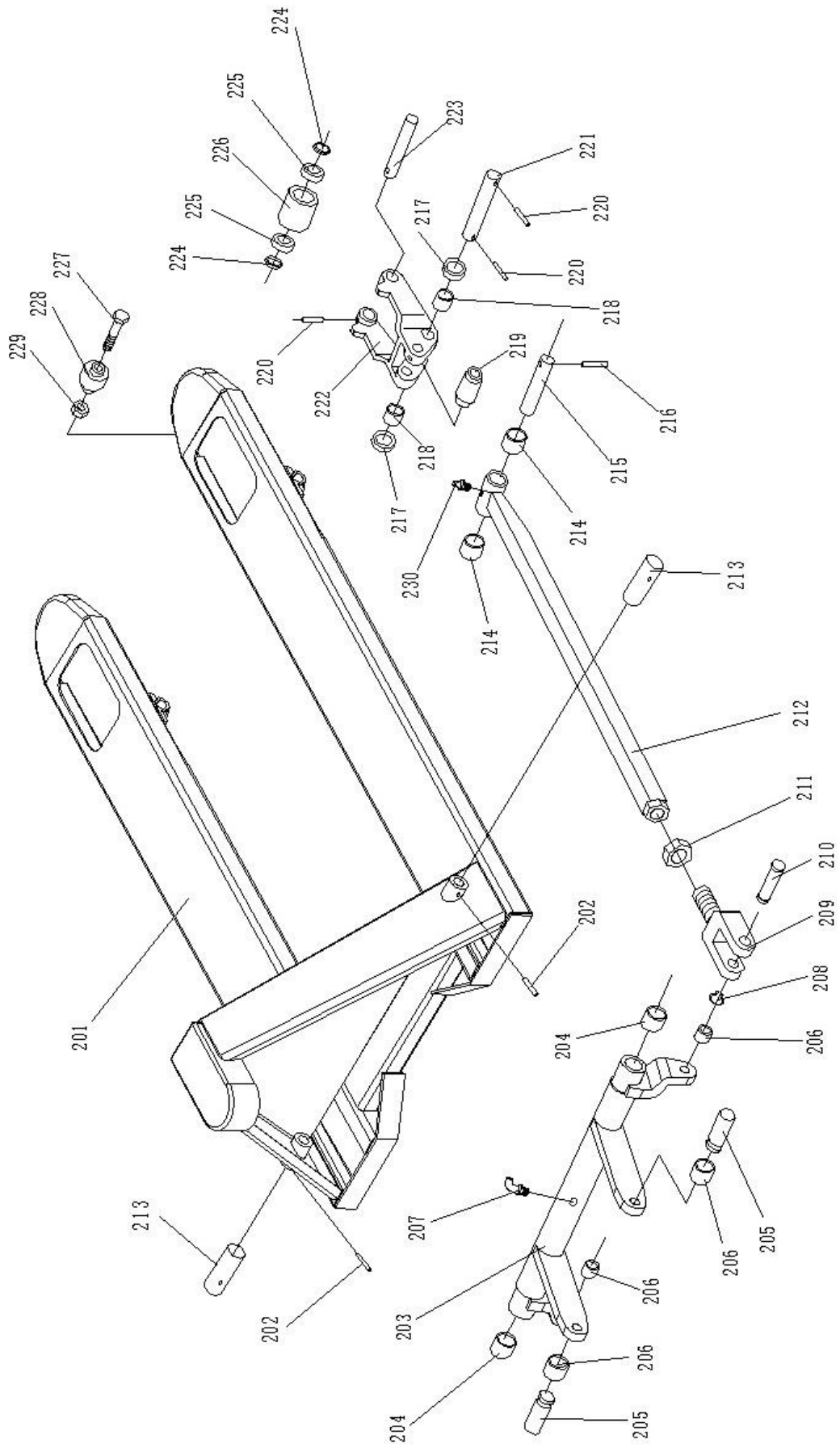


Fig 2 - Frame assembly

No.	Mobile Part #	Item	Quantity
202	12XN202	Elastic Pin	2
203	12XN203	Rock - Arm	1
204	12XN204	Bushing	2
205	12XN205	Shaft	2
206	12XN206	Bushing	2
207	12XN207	Grease Cup	1
208	12XN208	Retaining Ring	2
209	12XN209	Joint	2
210	12XN210	Pin	2
211	12XN211	Nut	2
212	12XN212	Pushing Rod	2
213	12XN213	Shaft	2
214	12XN214	Bushing	4
215	12XN215	Shaft	2
216	12XN216	Elastic Pin	2
217	12XN217	Intermediate Roller	4
218	12XN218	Bushing	4
219	12XN219	Extending Roller	2
220	12XN220	Elastic Pin	6
221	12XN221	Shaft	2
222	12XN222	Frame of Roller	2
223	12XN223	Shaft	2
224	12XN224	Washer	4
225	12XN225	Bearing	4
226	12XN226	Loading Roller	2
227	12XN227	Bolt	2
228	12XN228	Enter Roller	2
229	12XN229	Locking Nut	2
230	12XN230	Grease Cup	2

Fig 3 - Pump Assembly

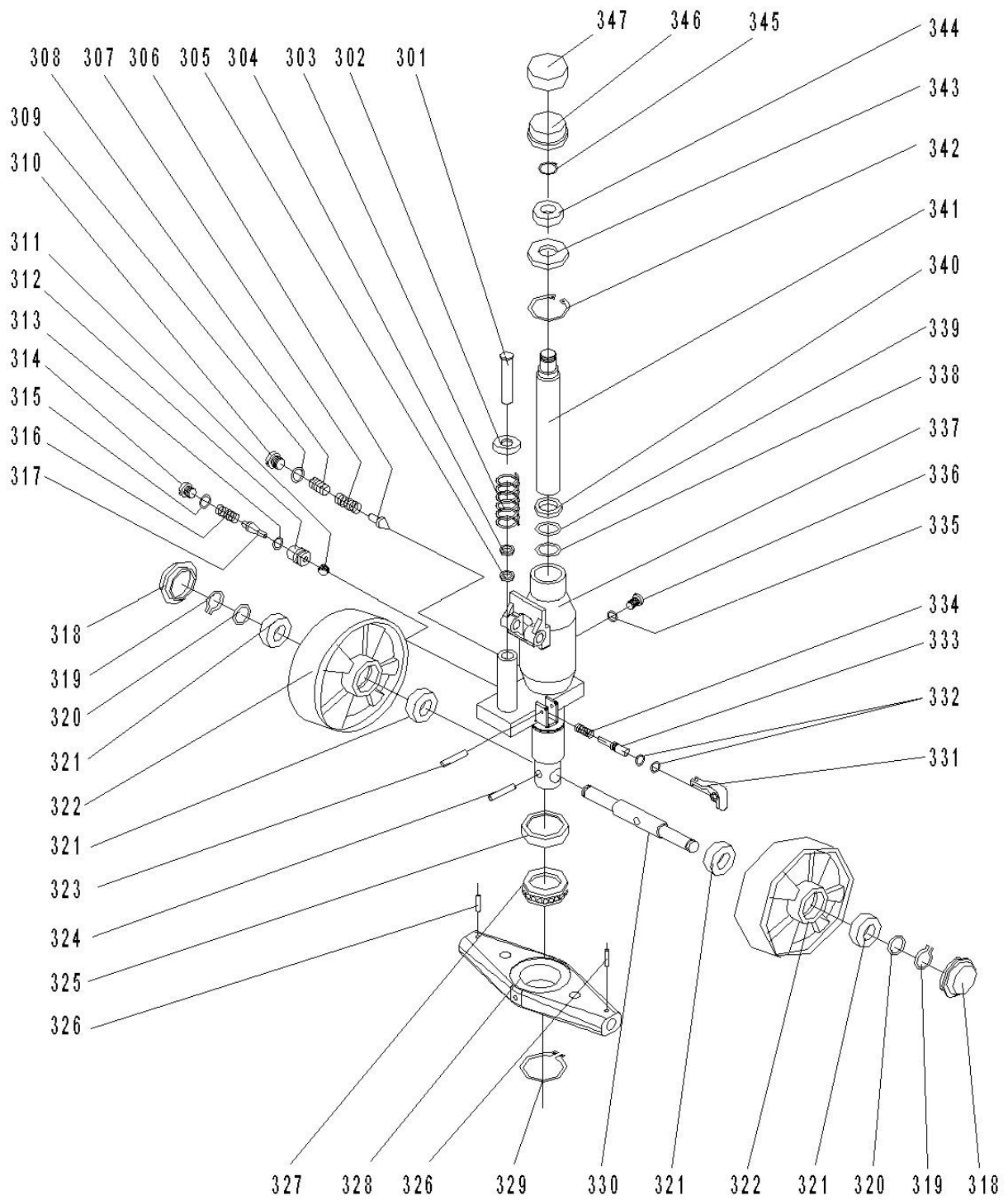


Fig 3 - Pump Assembly

No.	Mobile Part #	Item	Quantity
	12XN0	Complete Pump Assembly	1
	12XN01	Complete Pump and Handle Assembly	1
	12XNSK	Seal Kit	1
301	12XN301	Pump Piston	1
302	12XN302	Cover for spring	1
303	12XN303	Big spring	1
304	12XN304	Dust ring	1
305	12XN305	Seal ring	1
306	12XN306	Spindle of safety valve	1
307	12XN307	spring	1
308	12XN308	Bolt	4
309	12XN309	O-ring	1
310	12XN310	Bolt	1
311	12XN311	Steel Ball	1
312	12XN312	Seat of Pumping Valve	1
313	12XN313	O-ring	1
314	12XN314	Bolt	1
315	12XN315	Washer	1
316	12XN316	spring	1
317	12XN317	Spindle of Pumping Valve	1
318	12XN318	Dust Cover	2
319	12XN319	Retaining Ring	2
320	12XN320	Washer	2
321	12XN321	Bearing	4
322	12XN322	Loading Wheel	2
323	12XN323	Elastic Pin	1
324	12XN324	Elastic Pin	1
325	12XN325	Bearing Cover	1
326	12XN326	Elastic Pin	2
327	12XN327	Bearing	1
328	12XN328	Thrust Plate	1
329	12XN329	Retaining Ring	1
330	12XN330	Shaft of Wheel	1
331	12XN331	Lever Plat	1
332	12XN332	O-ring	2
333	12XN333	Release valve	1
334	12XN334	spring	1
335	12XN335	Seal Washer	1
336	12XN336	Bolt	1
337	12XN337	Pump Body	1
338	12XN338	Seal	1
339	12XN339	Y-seal	1
340	12XN340	Dust Ring	1
341	12XN341	Piston Rod	1
342	12XN342	Retaining Ring	1
343	12XN343	Washer	1
344	12XN344	Bearing	1
345	12XN345	Retaining Ring	1
346	12XN346	Bearing Base	1
347	12XN347	Rubber Cover	1



MOBILE INDUSTRIES INC.

3750B Laird Road Unit 2 & 3, Mississauga, Ontario, L5L 0A6, CANADA

Tel: (905) 279-5370 Toll-free: 800-527-4612 Fax: (905) 279-7384 Toll-free: 800-952-5097

E-mail: info@mobilept.com Website: www.mobilept.com