



OPERATING INSTRUCTIONS & PARTS LIST

ECO HEAVY DUTY

VERSION	AUGUST 2022
MODEL	ECO I-11HD HEAVY DUTY PALLET TRUCK
APPLICABLE PRODUCTS	ECO I-11HD

NOTE: Owner and operator MUST read and understand the operating instructions before using the unit.

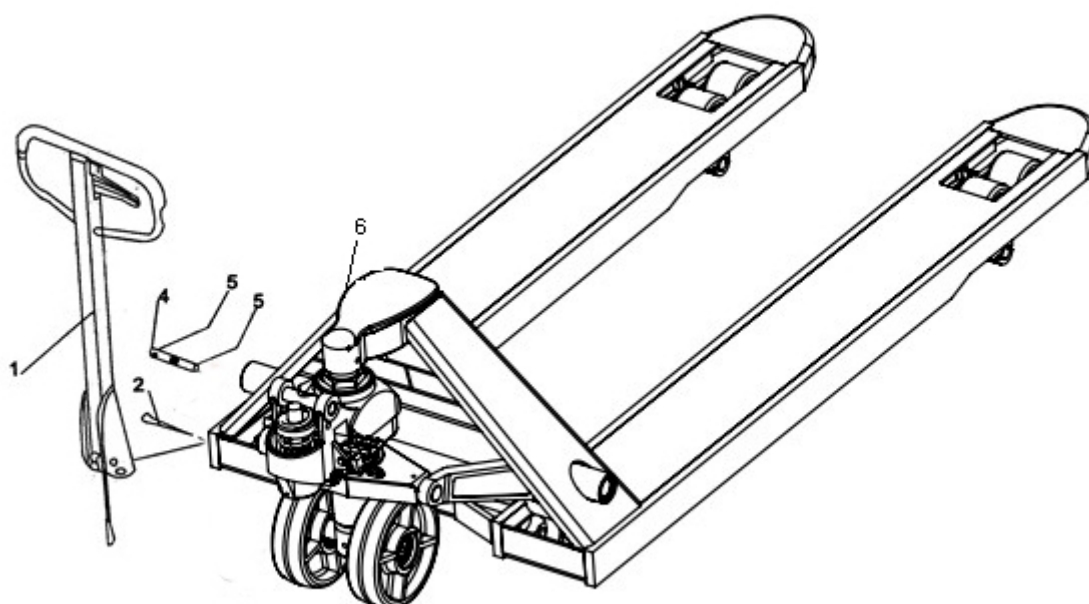
Thank you for using our pallet truck. Your pallet truck is made of high quality steel and is designed for the horizontal lifting and transport of loads on a pallet or standardized containers on a level, fixed base. For your safety and correct operation, please carefully read this instruction before using it.

1. GENERAL SPECIFICATIONS

Capacity (kg)	5000 / 11,000lbs
Max. Fork Height (mm)	185 / 7.28"
Min. Fork Height (mm)	85 / 3.3"
Fork Length (mm)	1220 / 48"
Width Overall Forks (mm)	550/685 / 21.6/27"
Individual Fork Width (mm)	180 / 7.0"
Wheels Material	Nylon/Iron

2. TO ATTACH DRAW-BAR TO PUMP UNIT

If you have purchased a wooden box of pallet truck, some assembly is required. Certainly, you need some tools, a hammer, a pliers, a spanner, etc; and some parts, one axle with hole (W105), two elastic pins (W106) (**Note one is in the axle (W105)**), these parts are putted in a plastic bag, which is putted into the draw-bar.



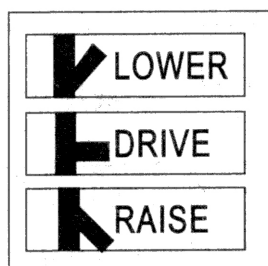
1. Draw-bar 2. Pin 4. Axle with hole 5. Elastic pin 6. Fork frame

Fig. 1

- 2.1. Insert the draw-bar onto the pump piston (W362), then use a hammer to insert the axle with hole (W105) into the hydraulic pump and draw-bar **from the right to left**. [note: let the perforated pin shaft center hole is “\” and elastic pin hole on your J] With the pliers and a hammer spring pin (W106) type shaft (W105).
- 2.2 .Then pressed the handle, remove the pin 2 (see figure 1).
- 2.3 .Let the adjusting bolt (W103) adjusting nut (W104) and the chain (W102) through the shaft center hole (W105), then lift the unloading board (W341), the adjusting bolt (W103) in its front end groove, let the adjusting nut (W104) on the unloading plate (W342) bottom. Then the handle will be installed on the pump body.

3. TO ADJUST RELEASE DEVICE

On the draw-bar of this pallet truck, you can be regulated in three positions:



can find the control handle(W117) which

If however they have been changed, you can adjust according to following step:

- 3.1.If the forks elevate while pumping in the **DRIVE** position, turn the adjusting nut (W104) on the adjusting bolt (W103) clockwise until pumping action does not raise the forks and the **DRIVE** position functions properly.
- 3.2.If the forks descend while pumping in the **DRIVE** position, turn the nut (W104) counter-clockwise until the forks do not lower.
- 3.3.If the forks do not descent when the control handle (W117) is in the **LOWER** position, turn the nut (W104) clockwise until raising the control handle (W117) lowers the forks. Then check the **DRIVE** position according to item 3.1 and 3.2 to be sure the nut (W104) is in the proper position.

4. MAINTENANCE

4.1 OIL

Please check the oil level every six months. The oil can be hydraulic oil: ISO VG32, its viscosity should be 30cSt at 40° C, total volume is about 0.42lt.

4.2 TO BANISH THE AIR

The air may come into the hydraulic oil because of transportation or pump in upset position. It can cause that the forks do not elevate while pumping in the **RAISE** position. The air can be removed in the following way: let the control handle (W117) on the **LOWER** position, then move the draw-bar(W110) up and down for several times.

4.3 DAILY CHECK AND MAINTENANCE

Daily check of the pallet truck can limit wear as much as possible. Special attention should be paid to the wheels, the axles, as thread, rags, etc. It may block the wheels. The forks should be unloaded and lowered in the lowest position when the job is over.

4.4 LUBRICATION

All bearings and shafts are provided with long-life grease at the factory. You only need provide with long-life grease at monthly intervals or after each time the truck is cleaned thoroughly to the lubrication points.

5 GUIDE TO SAFETY OPERATION

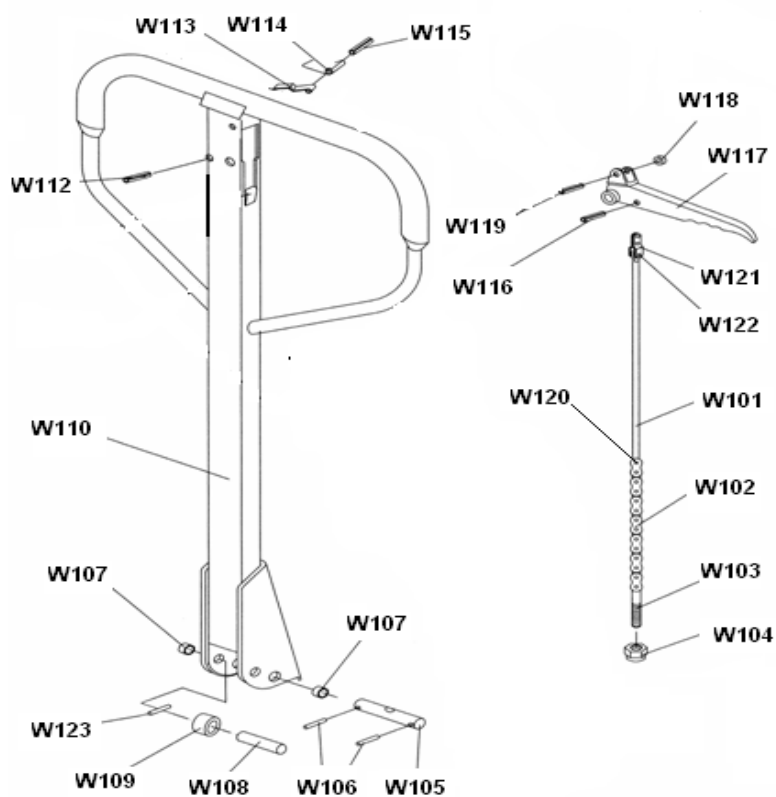
- 5.1 Operator should read all warning signs and instructions here and on the pallet truck before using this truck.
- 5.2 Do not use on a slopping ground.
- 5.3 Do not operate a pallet truck unless you are familiar with it and have been trained or authorized to do so.
- 5.4 Do not operate a pallet truck unless you have checked its condition. Give special attention to the wheels or rollers, the draw-bar unit, the fork unit, the lever plate, etc..
- 5.5 To pull the truck, always move the control handle into the drive position. This makes the draw-bar easier to move and depressurizes the pump section of the hydraulics. This preserves the hydraulic seals and the valve components. A long service life can be expected.
- 5.6 Do not take up any people on the pallet truck.
- 5.7 The operator had better take on gloves for labor protecting.
- 5.8 When the goods have been transported, all people should be away from the forks for 600mm.
- 5.9 Do not load goods.
- 5.10 Do not load over maximum capacity.
- 5.11 At others special condition or place, the operator should be carefully to operate the pallet truck.

6 TROUBLESHOOTING

No	Trouble	Clause	Fixing Methods
1	The forks cannot be up the max. height.	-The hydraulic oil is not enough.	-Pour in the oil.
2	The forks cannot be lifted up.	-Without hydraulic oil. -The oil has impurities. -The nut (W114) is too high, keep the pumping valve open. -Air come into the hydraulic oil.	-Fill in the oil. -Change the oil. -Adjust the nut(W104). -Banish the air.
3	The forks cannot be descended.	-The piston rod or pump body is deformed resulting from piston rod or partial loading slanting to one side or over-loading. -The fork was kept in the high position for long time with piston rod bared to arise in rusting and jamming of the rod. -The adjusting nut (W114) is not in correct position.	-Replace the piston rod (W351) or pump (W361). -Keeping the fork in the lowest position if not using, and pay more attention to lubricate the rod. -Adjust the nut (W104) .
4	Leaks	-Sealing parts worn or damaged. -Some part cracked or worn into small.	-Replace with the new one. -Replace with the new one.
5	The fork descends without the release valve worked.	- Due to the placement of the goods to one side or overload, making the piston rod (W351) or small pump core (W361) damage. -Fork in a higher position for a long time, make piston show rust, blocking the piston movement. -The adjusting nut (W104) is not in the correct position.	-Replace with new oil. -Banish the air. -Adjusting the nut (W104).

NOTE: DO NOT ATTEMPT TO REPAIR THE PALLET TRUCK UNLESS YOU ARE TRAINED AND AUTHORIZED TO DO SO.

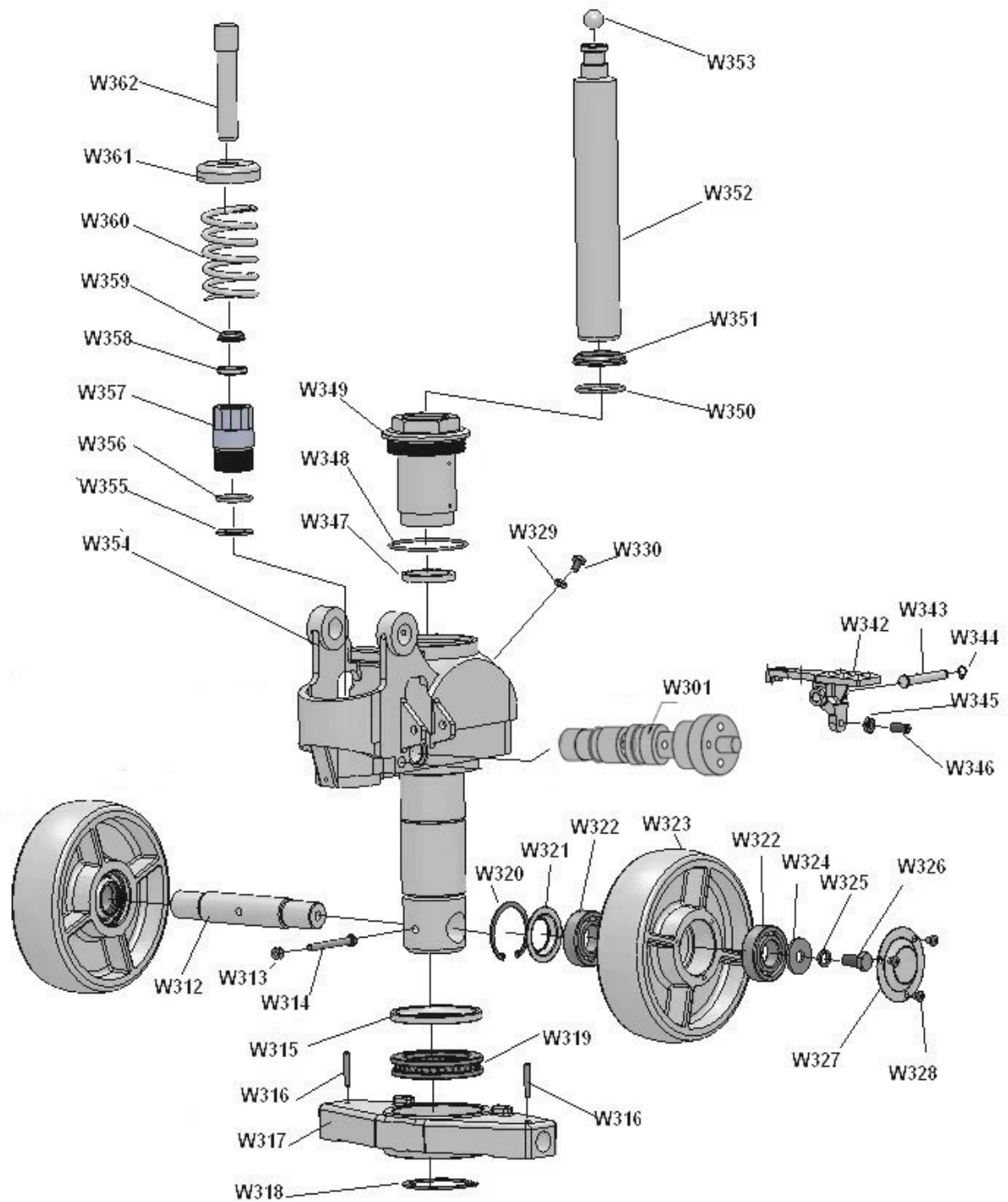
DRAW-BAR



LIST OF DRAW-BAR

No.	Mobile #	Description	Qty.	No.	Mobile #	Description	Qty.
W101	18EW101	Release Rod	1	W113	18EW113	Blade Spring	1
W102	18EW102	Chain	1	W114	18EW114	Spring	1
W103	18EW103	Adjusting Bolt	1	W115	18EW115	Elastic Pin	1
W104	18EW104	Adjusting Nut	1	W116	18EW116	Elastic Pin	1
W105	18EW105	Axle with Hole	1	W117	18EW117	Control Handle	1
W106	18EW106	Elastic Pin	2	W118	18EW118	Roller	1
W107	18EW107	Bushing	2	W119	18EW119	Elastic Pin	1
W108	18EW108	Roller shaft	1	W120	18EW120	Pin	1
W109	18EW109	Roller	1	W121	18EW121	Pull Board	1
W110	18EW110	Draw-bar	1	W122	18EW122	Pin	1
W112	18EW112	Elastic Pin	1	W123	18EW123	Elastic Pin	1

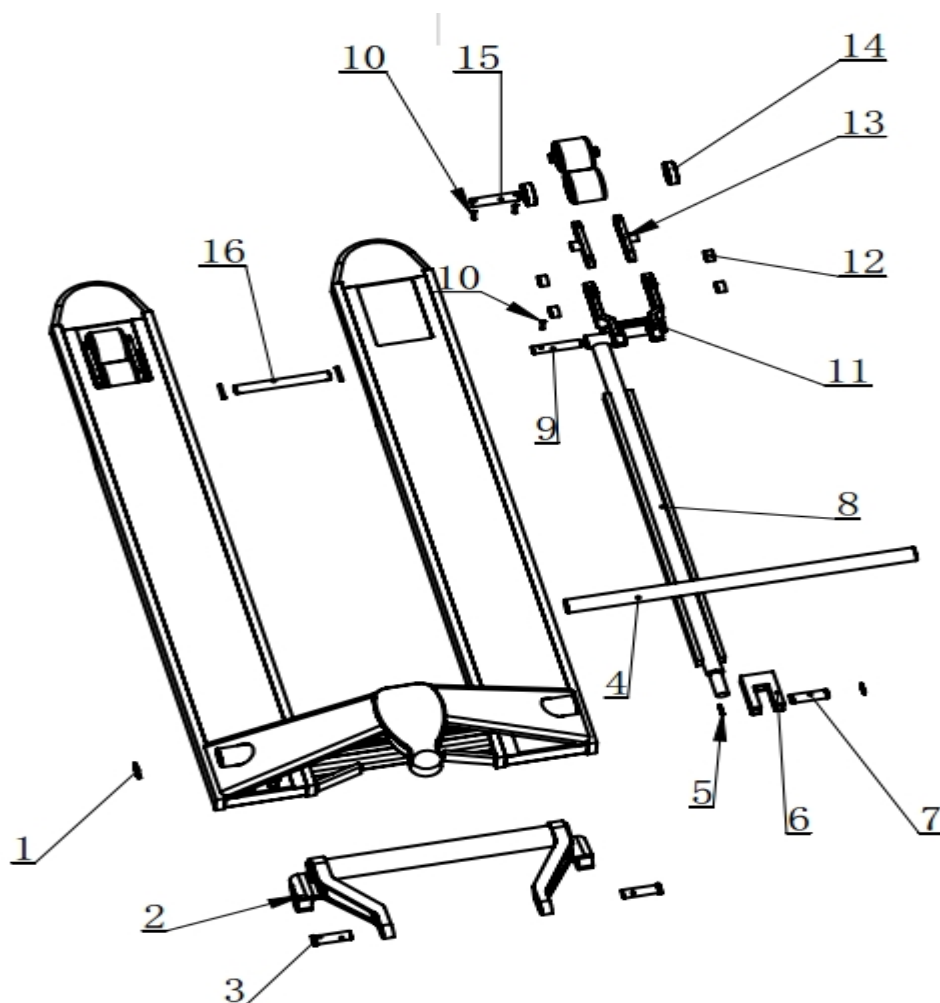
HYDRAULIC PUMP



LIST OF HYDRAULIC PUMP

No	Description	Qty.	No	Description	Qty.
18EW301	Valve assemble	1	18EW342	Lever Plate	1
18EW312	Shaft of Loading Wheel	1	18EW343	Pin	1
18EW313	Nut	1	18EW344	Retaining Ring	1
18EW314	Bolt	1	18EW345	Nut	1
18EW315	Bearing	1	18EW346	Screw Plug	1
18EW316	Elastic Pin	2	18EW347	Seal	1
18EW317	Thrust Plate	1	18EW348	O-Ring	1
18EW318	Retaining Ring	1	18EW349	Nut	1
18EW319	Bearing	1	18EW350	O-Ring	1
18EW320	Retaining Ring	2	18EW351	Spring Cap	1
18EW321	Dust Cover	2	18EW352	Piston Rod	1
18EW322	Bearing	4	18EW353	Steel Ball	1
18EW323	Loading Wheel	2	18EW354	Pump Body Shell	1
18EW324	Bearing	2	18EW355	Seal Washer	1
18EW325	spring washer	2	18EW356	O-Ring	1
18EW326	Screw Plug	2	18EW357	Pump Body	1
18EW327	Dust Cover	2	18EW358	Seal	1
18EW328	Screw Plug	6	18EW359	Dust Ring	1
18EW329	Seal Washer	1	18EW360	Spring	1
18EW330	Screw Plug	1	18EW361	Spring Cap	1
			18EW362	Pump Piston	1

BODY OF THE FORKS



LIST OF THE FORKS

No	Mobile #	Description	Qty.	No	Mobile #	Description	Qty.
1	18EW201	Retaining Ring	2	9	18EW209	Shaft	2
2	18EW202	Rook-Arm	1	10	18EW210	Elastic Pin	16
3	18EW203	Pin	2	11	18EW211	Frame Of Fork Wheel	2
4	18EW204	Long Shaft	1	12	18EW212	Steel Bushing	8
5	18EW205	Retaining Ring	4	13	18EW213	Rocker	2
6	18EW206	Connecting Base	2	14	18EW214	Bearing	8
7	18EW207	Short Shaft	2	15	18EW215	Shaft For Fork Wheel	4
8	18EW208	Straight Tappet	2	16	18EW216	Shaft	2



MOBILE INDUSTRIES, INC.
37508 Laird Rd - Unit 2 & 3
Mississauga ON, L5L 0R6
Canada

Toll Free: 1 800 527 4612 • Local 905 279 5370
Email: info@mobilept.com

MOBILEPT.COM