



OPERATING INSTRUCTIONS & PARTS BREAKDOWN

EHS33NFF STACKER

VERSION

AUGUST 2020

MODEL

EHS33NFF HEAVY DUTY SEMI-ELECTRIC FORK-OVER STACKER

APPLICABLE PRODUCTS

EHS33NFF-63, EHS33NFF-98, EHS33NFF-118, EHS33FFLN-114 EHS33N-63, EHS33N-98, EHS33N-118

NOTE: Please read and understand the safety instructions prior to use. Please save for future reference.

Welcome to use our electric stacker. Your stacker is made of high quality steel and SPED mast and was designed to give a durable, reliable and easy to use product. For your safety and correct operation, please carefully read this instruction book and warnings on the stacker before using it.

This Operation Instruction of the stacker is edited for you to completely acquire and master the safety operation of the stacker.

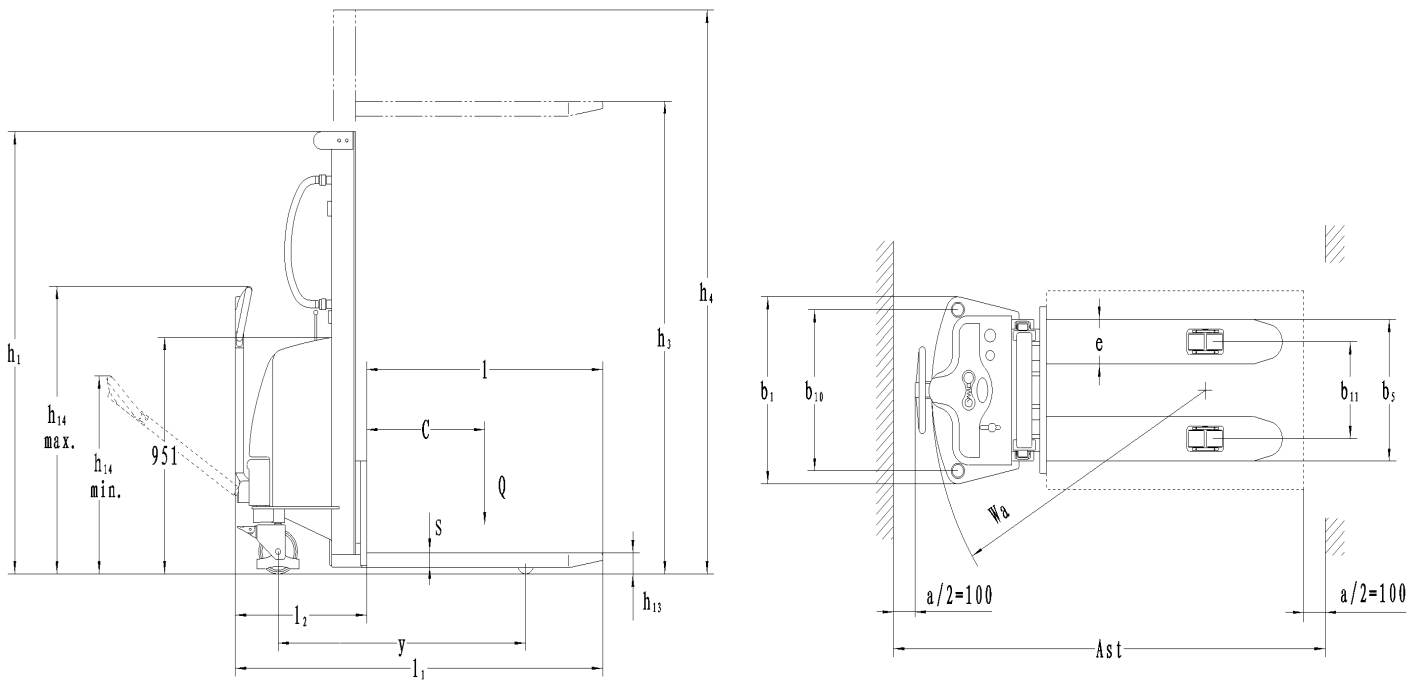
Specifications of different types of the stackers are described in this Operation Instruction. During operation and maintenance, please apply the relevant parts for the type of the stacker.



All of the information reported herein is based on data available at the moment of printing.

We reserves the right to modify our own products at any moment without notice and incurring in any sanction. So, it is suggested to always verify possible updates.

1 Technical Specifications



Technical Data

Characteristics	1.2	Model of manufacture	EHS33N-63	EHS33N-98	EHS33N-118	EHS33N-114
	1.3	Drive: (electric-battery or mains,diesel,petrol,fuel gas>manual)	manual	manual	manual	manual
	1.4	Type of operation (hand,pedestrian,standing,seated,order picker)	pedestrian	pedestrian	pedestrian	pedestrian
	1.5	Load capacity / rated load Q (kg)	1500	1500	1500	1500
	1.6	Load centre distance c (mm)	600	600	600	600
	1.9	Wheelbase y (mm)	1160	1160	1160	1160
Weight	2.1	Weight (including battery) kg	436	516	543	554
Wheels Chassis	3.1	Types (solid rubber,superelastic,nylon, polyurethane)	Nylon/PU	Nylon/PU	Nylon/PU	Nylon/PU
	3.2	Type size,front mm	180x50	180x50	180x50	180x50
	3.3	Type size, rear mm	74x70	74x70	74x70	74x70
	3.5	Wheels,number front/rear	2/4	2/4	2/4	2/4
	3.6	Track width, front b ₁₀ (mm)	680	680	680	680
	3.7	Track width, rear b ₁₁ (mm)	390/490	390/490	390/490	390/490
Basic Dimensions	4.2	Lowered mast height h ₁ (mm)	1980	1780	2030	1980
	4.3	Free lift h ₂ (mm)				1440
	4.4	Lift height h ₃ (mm)	1600	2500	3000	2900
	4.5	Extended mast height h ₄ (mm)	1980	3020	3520	3420
	4.9	Height of handle min./max. h ₁₄ (mm)	790/1156	790/1156	790/1156	790/1156
	4.15	Fork height lowered h ₁₃ (mm)	85	85	85	85
	4.19	Overall length L ₁ (mm)	1720/1570	1720/1580	1720/1580	1720/1580
	4.20	Length to face of forks L ₂ (mm)	610/670	610/670	610/670	610/670
	4.21	Overall width b ₁ (mm)	777	777	777	777
	4.22	Fork dimensions s/e/L (mm)	60/180/1100 60/150/900	60/180/1100 60/150/900	60/180/1100 60/150/900	60/180/1100 60/150/900
	4.25	Width over forks b ₅ (mm)	570 330~640	570 330~640	570 330~640	570 330~640
	4.33	Aisle width for pallets 1000×1200 crossways Ast (mm)	2145	2145	2145	2145
	4.34	Aisle width for pallets 800×1200 lengthways Ast (mm)	2175	2175	2175	2175
4.35	Turning radius Wa (mm)	1280	1280	1280	1280	
Performance	5.2	Lift speed ,laden/unladen mm/s	65/100	65/100	65/100	72/112
	5.3	Lowering speed ,laden/unladen mm/s	85/70	85/70	85/70	96/80
	5.11	Parking brake	manual	manual	manual	manual
E-Motor	6.2	Lift motor rating at S ₃ 15% kw	1.5	1.5	1.5	1.5
	6.4	Battery voltage ,nominal capacity K ₅ V/Ah	12/150	12/150	12/150	12/150
	6.5	Battery weight kg	45	45	45	45

Residual Capacity at different lifting height

Up to h3 mm	ACTUAL CAPACITY (Q) kg	
1500	1500	
2500	1500	
3000	800	
Load centre distance (C) mm	600	

2 SAFETY GUIDANCE

- 2.1 Operator should read all warning signs and instructions here and on the stacker before using it.
- 2.2 Do not operate a stacker unless you are familiar with it and have been trained or authorized to do so.
- 2.3 Do not operate a stacker unless you have checked its condition. Give special attention to the chain, the wheels, the handle, the guide frame, the pilot wheel, the mast, battery, etc.
- 2.4 Do not use on a slopping ground or on a barbaric or explosive danger environment.
- 2.5 Do not take up any people on the forks.
- 2.6 When forks lifting, forbid anyone to stand under the forks or pass through the forks.
- 2.7 The operator had better take on gloves for labor protecting.
- 2.8 Do not move the stacker when the goods are lifted to the height more than 300mm.
- 2.9 When the goods have been transported or lifted, all people should be away from the forks for 600mm.
- 2.10 The weight of goods should be distributed on the two forks, do not use only one fork. The center of gravity of goods should be in the center of two forks.
- 2.11 Do not load over maximum capacity.
- 2.12 Before using or charging it, check cell liquid, if not enough, full it with distilled water.
- 2.13 Charging should be in dry and ventilated location, and far away from the fire.
- 2.14 Keeping the forks in the lowest position if not using.
- 2.15 At other special condition or place, the operator should be carefully to operate the stacker.

3 MAINTENANCE

3.1 Hydraulic oil

Please check the oil level every six months. The oil can be hydraulic oil: **ISO VG32**, its viscosity should be 32cSt at 40°C, total volume is about 4.0lt. use temperature -20°C~50 °C
Replace the hydranlic oil (every 12 months).

3.2 Daily check and maintenance

It is necessary to check the stacker daily. Special attention should be paid to the wheels, the axles, as thread, rags, etc., it may block the wheels, the fork and the mast, the chain, the battery should be checked, too. The forks should be unloaded and lowered in the lowest position when the job is over.

3.3 Lubrication

Use motor oil or grease to lubricate all movable parts.

3.4 Maintenance of battery: Keep all the screw caps on each cell battery dry and clean. Each connecting terminal and cable terminal should be tightened and painted with clean grease. The exposed connecting terminal and connecting rod of battery should be covered with anti-slip insulated cover.

3.5 Recharge the battery fully and carry out usual battery maintenance.

Maintenance charge the battery every third month and check the fluid level.

4 HOW TO CHARGE STORAGE BATTERY

4.1 Charge storage battery when its voltage is less than 10 Volt.

4.2 Please check the battery liquid before charging, if it is not enough, add some distilled water.

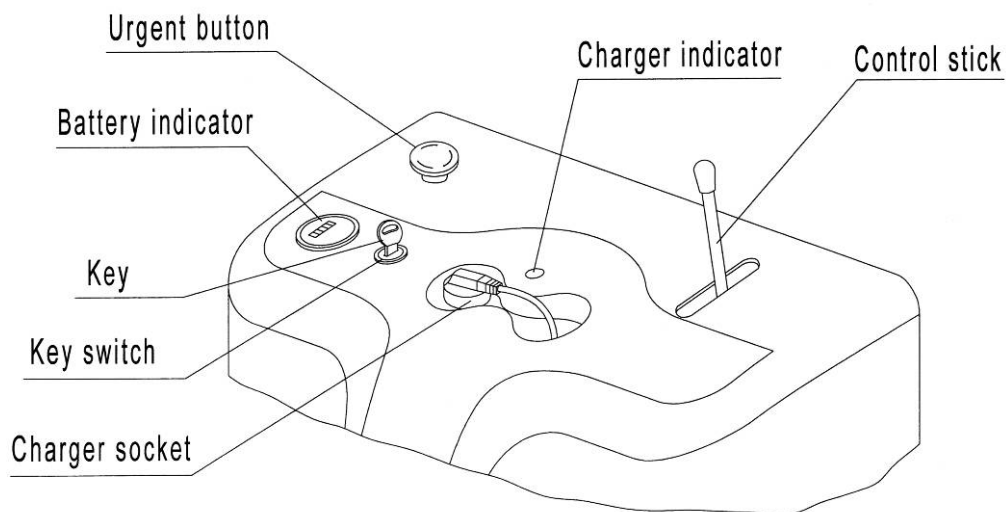
4.3 The charging environment should be ventilated and far away from the fire.

4.4 If the stacker not use for long time, charge it for not less than two hours every week.

4.5 The voltage on the indicator should not be over 15 Volt when charging.

4.6 Do not use the stacker when charging.

5 CONTROL PANEL



5.1 Urgent button

When you press down this switch, it will switch off the power, and then you turn it clockwise, it will switch on the power.

5.2 Battery indicator

It indicates the voltage of battery. When its voltage is less than 10 Volt, you should not use this stacker, you must charge it.

5.3 Control stick

This stick controls the forks to lower or lift.

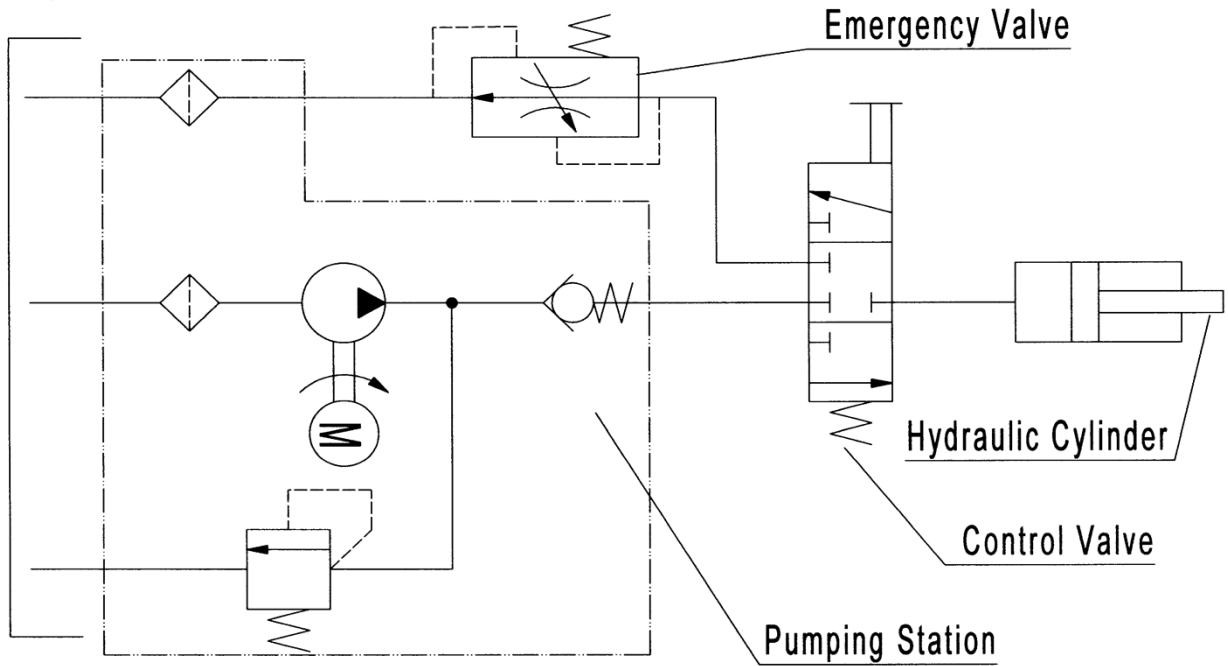
5.4 Charger socket

6 TROUBLES SHOOTING

No	Trouble	Clause	Fixing Methods
1	The forks cannot be up the max. height.	-The hydraulic oil is not enough.	-Pour in the oil.
2	The forks cannot be lifted up.(Motor is rotary)	-Without hydraulic oil. -The oil has impurities.	-Fill in the oil. -Change the oil.
3	The motor cannot run.	-The urgent switch is pressed down, cut off the power. -The voltage is too lower. -The connectors of electrical wire is loose. -The contactor of DC motor is bad.	-Turn it clockwise, switch on the power -Charge it. -Turn it firm. -Replace with new one.
4	The forks cannot be descended.	-The piston rod or mast is deformed resulting from partial loading slanting to one side or over-loading. -The fork was kept in the high position for long time with piston rod bared to arise in rusting and jamming of the rod. -The release valve of pump is not opened.	- Replace with new one. -Keeping the fork in the lowest position if not using, and pay more attention to lubricate the rod. -Check it, if damaged, replace with new one.
5	Leaks	-Sealing parts worn or damaged. -Some part cracked or worn into small.	-Replace with the new one. -Replace with the new one.
6	The fork descends without the release valve worked.	-The impurities in the oil cause the release valve to be unable to close tight. -Sealing parts worn or damaged. -The release valve is damaged.	-Replace with new oil. -Replace with the new one. -Replace with the new one.
7	Battery cannot be charged	-Battery is bad. -The charging plug is loose.	-Replace with the new one. -Turn it firm.

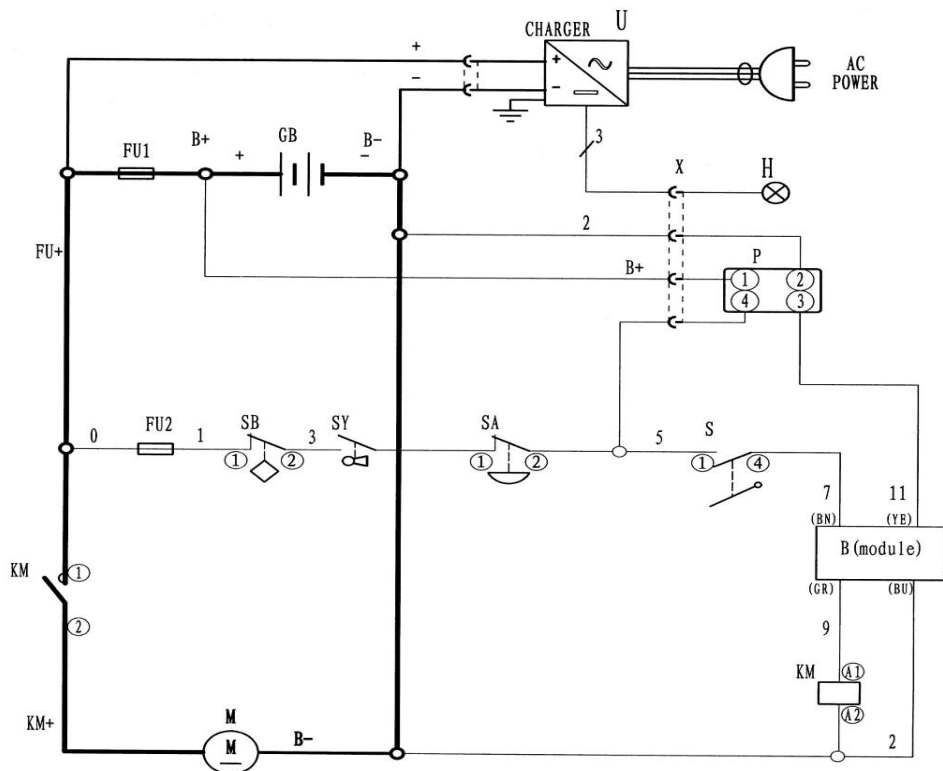
⚠ DO NOT ATTEMPT TO REPAIR THE STACKER UNLESS YOU ARE TRAINED AND AUTHORIZED TO DO SO.

7 Hydraulic Flow Diagram

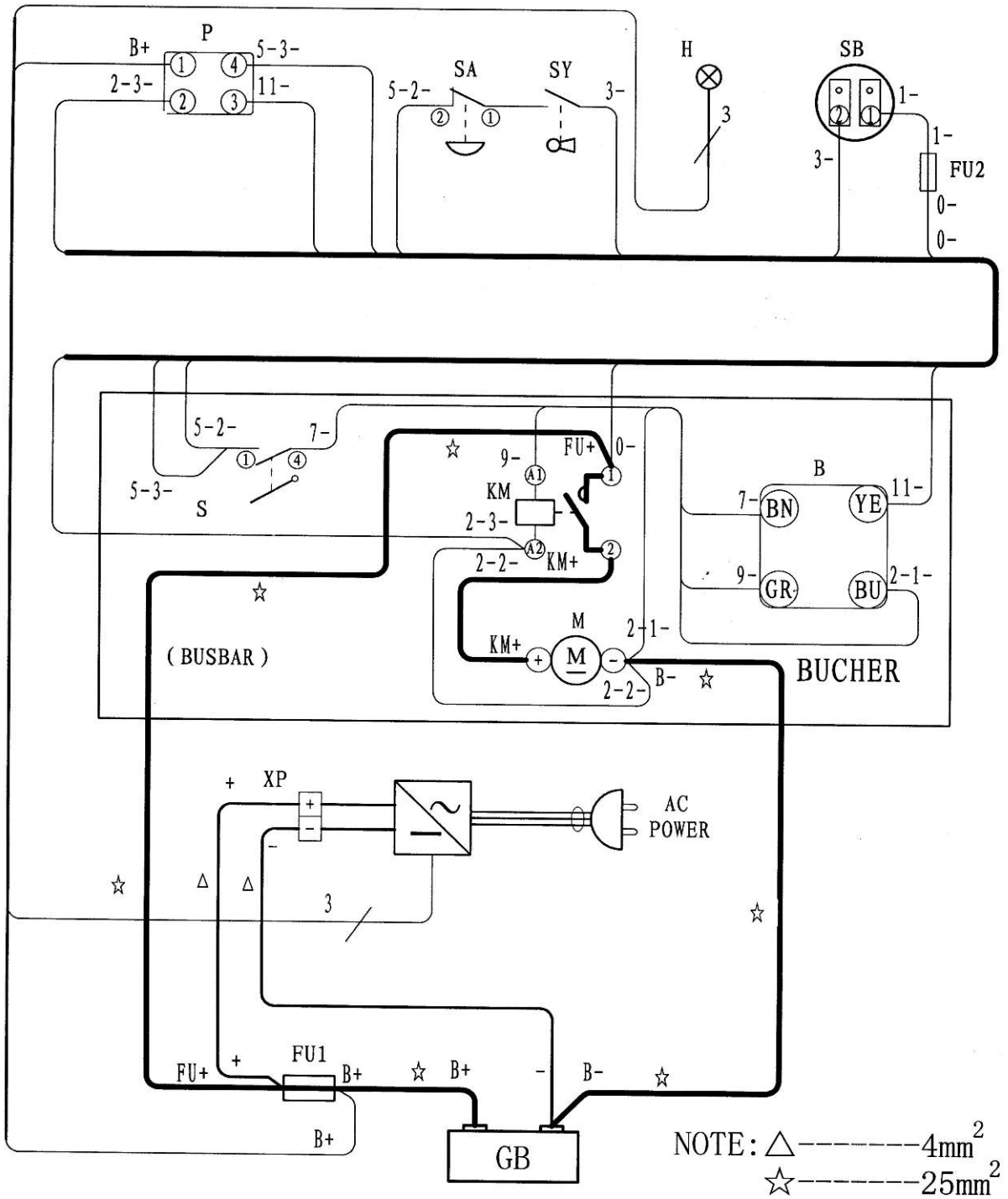


8 Electric Wires Diagram

8.1 CIRCUIT DIAGRAM

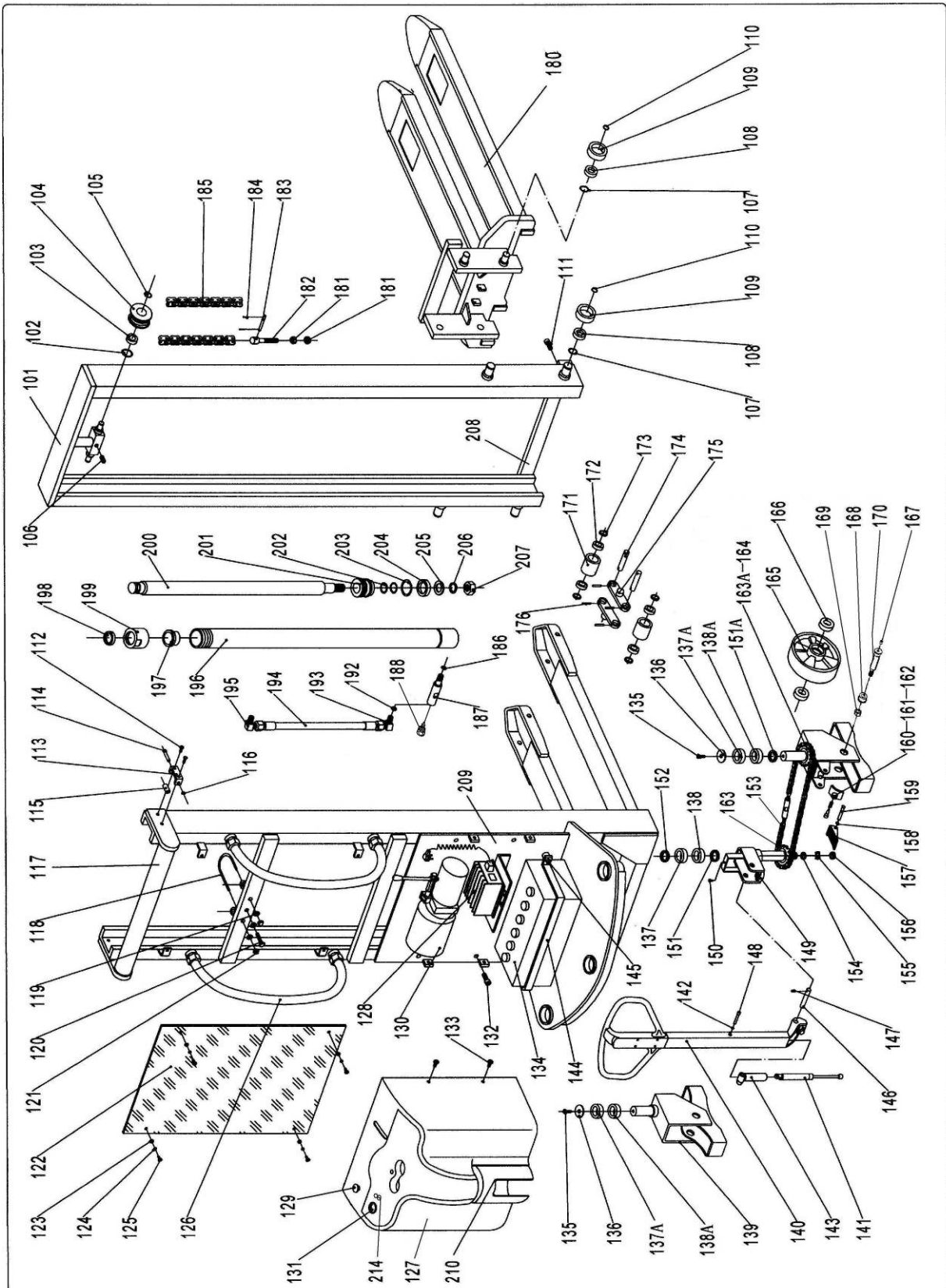


8.2 CONNECTION DIAGRAM



9 Parts List

9.1 EHS33NFF-98 / EHS33NFF-118 Part List

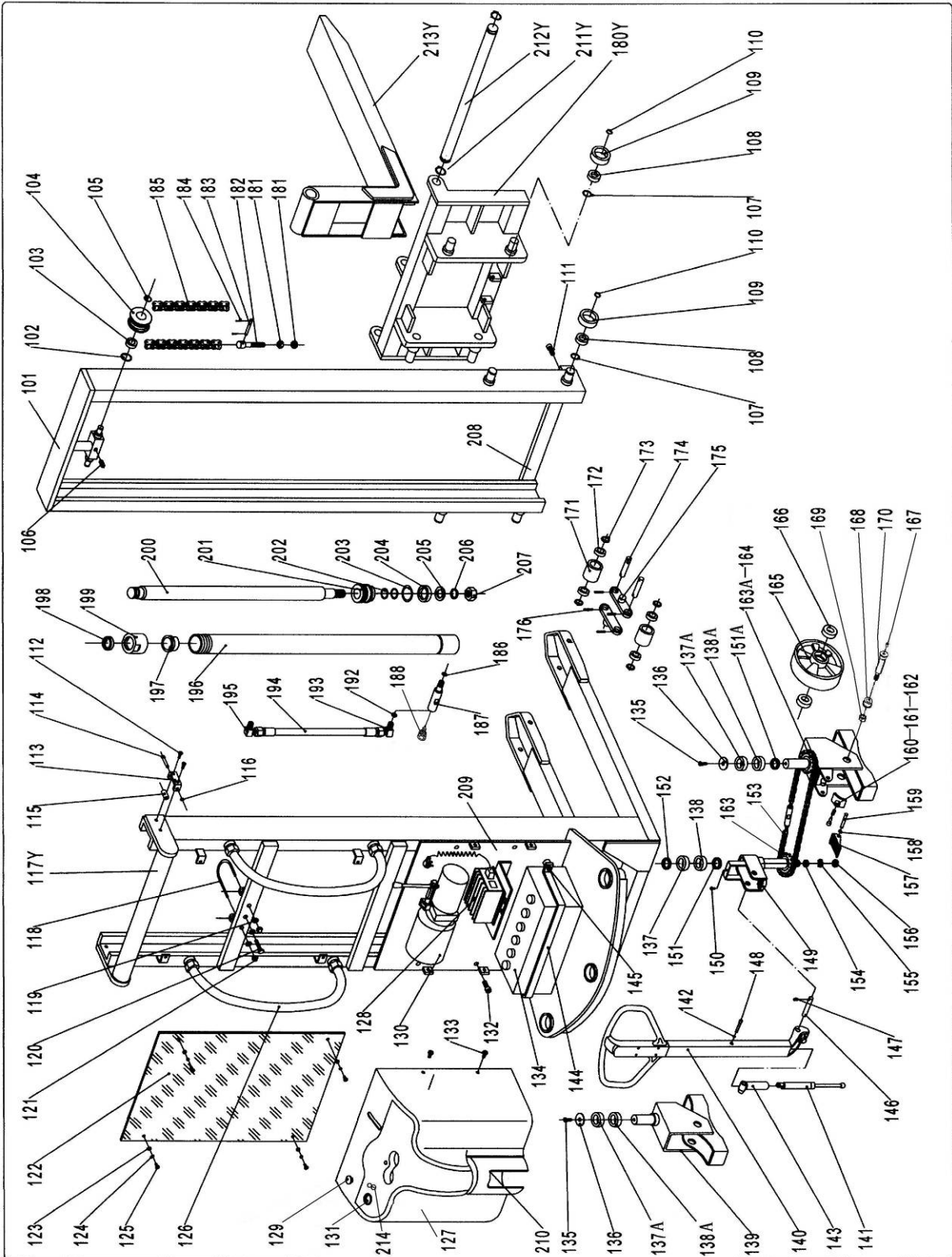


EHS33NFF-98 / EHS33NFF-118 Part List

No.	Code	Mobile #	Description	Qty.
101	D13560035	EHS33NFF-101-25	Inner Mast 1525	1
	D13560041	EHS33NFF-101-30	Inner Mast 1530	1
102	504040025	EHS33NFF-102	Locking Ring	2
103	349010119	EHS33NFF-103	Bearing	2
104	422260023	EHS33NFF-104	Roller For Chain	2
105	504030018	EHS33NFF-105	Locking Ring	2
106	5010808010C0	EHS33NFF-106	Screw	1
107	504030020	EHS33NFF-107	Locking Ring	8
108	349010121	EHS33NFF-108	Bearing	8
109	422660024	EHS33NFF-109	Roller	8
110	301799039	EHS33NFF-110	Washer	8
111	5010410020C0	EHS33NFF-111	Bolt	2
112	5010408040C0	EHS33NFF-112	Bolt	4
113	422670020	EHS33NFF-113	Crutch of Idler Pulley	2
114	301727005	EHS33NFF-114	Shaft	2
115	422660030	EHS33NFF-115	Idler Pulley	2
116	504030004	EHS33NFF-116	Locking Ring	2
117	D13560034	EHS33NFF-117-25	Mast1525	1
	D13560040	EHS33NFF-117-30	Mast1530	1
118	301727017	EHS33NFF-118	Hoop	1
119	502030005	EHS33NFF-119	Nut	3
120	50101010040	EHS33NFF-120	Bolt	1
121	502990006	EHS33NFF-121	Nut	2
122	422670025	EHS33NFF-122	Protecting Meshwork	1
	422670026			
123	506030109	EHS33NFF-123	Protecting Washer	4
124	503010058	EHS33NFF-124	Washer	4
125	5010506016C0	EHS33NFF-125	Bolt	4
126	350240013	EHS33NFF-126	Handle	2
127	422640065	EHS33NFF-127	Cover	1
128	30910200005	EHS33NFF-128	Charger	1
129	30906200009	EHS33NFF-129	Urgent Switch	1
130	30916400402	EHS33NFF-130	Pump Station	1
131	30905100006	EHS33NFF-131	Voltage Meter	1
132	501990038	EHS33NFF-132	Bolt	4
133	5010605010C0	EHS33NFF-133	Bolt	4
134	30901500003	EHS33NFF-134	Battery	1
135	5010610016C0	EHS33NFF-135	Bolt	2
136	422570030	EHS33NFF-136	Cap	2
137A	349010121	EHS33NFF-137A	Bearing (6206)	2
137	349010119	EHS33NFF-137	Bearing (6205)	1
138A	622020032	EHS33NFF-138A	Bearing (30206)	2
138	349010145	EHS33NFF-138	Bearing (30205)	1
139	422670019	EHS33NFF-139	Seat of Wheel	1
140	G36040001	EHS33NFF-140	Draw-Bar for Turning	1
141	302990028A	EHS33NFF-141	Gas spring	1
142	504030002	EHS33NFF-142	Locking Ring	1
143	422660002	EHS33NFF-143	Seat of gas spring	1
144	D06510012	EHS33NFF-144	Hoop	1
145	5010408016C0	EHS33NFF-145	Bolt	2
146	422660005	EHS33NFF-146	Shaft	1
147	5010406012C0	EHS33NFF-147	Bolt	1
148	422660001	EHS33NFF-148	Shaft	1
149	D06510013	EHS33NFF-149	Seat of Draw-Bar	1
150	5010505010C0	EHS33NFF-150	Bolt	1
151	G36040002	EHS33NFF-151	Washer	1
151A	G36040004	EHS33NFF-151A	Washer	1
152	503010054	EHS33NFF-152	Washer	1
153	349030033	EHS33NFF-153	Chain	1

No.	Code	Mobile #	Description	Qty.
154	503010068	EHS33NFF-154	Washer	1
155	503020012	EHS33NFF-155	Washer	1
156	502040020	EHS33NFF-156	Nut	1
157	D01640004	EHS33NFF-157	Foot Plate	1
158	504030004	EHS33NFF-158	Locking Ring	1
159	301726012	EHS33NFF-159	Shaft	1
160	D01640003	EHS33NFF-160	Brake	1
161	302010116	EHS33NFF-161	Spring	1
162	422680028	EHS33NFF-162	Bolt	1
163	422680046	EHS33NFF-163	Sprocket Wheel	1
163A	349030011	EHS33NFF-163A	Sprocket Wheel	1
164	422670019	EHS33NFF-164	Seat of Turning Wheel	1
165	30301WH054	EHS33NFF-165	Big Wheel	2
166	349010113	EHS33NFF-166	Bearing	4
167	506060017	EHS33NFF-167	Oil holder (φ8)	2
168	422680037	EHS33NFF-168	Washer	2
169	502040012	EHS33NFF-169	Locking Nut	2
170	422660031A	EHS33NFF-170	Axle for wheel	2
171	30301WH017	EHS33NFF-171	Loading Roller	4
172	349010113	EHS33NFF-172	Bearing	8
173	503010036	EHS33NFF-173	Washer	8
174	301810037	EHS33NFF-174	Shaft	4
175	333050001	EHS33NFF-175	Linking Plate	4
176	505020088	EHS33NFF-176	Elastic Pin	8
180	D13560036	EHS33NFF-180	Fork Carriage	1
181	502030011	EHS33NFF-181	Nut	4
182	422680024	EHS33NFF-182	Bolt	2
183	505020031	EHS33NFF-183	Pin	4
184	505040010	EHS33NFF-184	Cotter pin	8
185	349030178	EHS33NFF-185-3	Chain: 3.0m	2
	349030179	EHS33NFF-185-2	Chain: 2.5m	2
186	504070041	EHS33NFF-186	O-Ring	1
187	351420015	EHS33NFF-187	Body of Adjusting Valve	1
188	G110203006	EHS33NFF-188	Adjusting Bolt	1
192	503030008	EHS33NFF-192	Seal Washer	1
193	422020186	EHS33NFF-193	Elbow Bend	1
194	30916400033	EHS33NFF-194	Vitta	1
195	422020187	EHS33NFF-195	Elbow Bend	1
196	351410003	EHS33NFF-196-25	Earthen Pipe 1525	1
	351410004	EHS33NFF-196-30	Earthen Pipe1530	1
197	T030402018	EHS33NFF-197	Sleeve	1
198	T030402019	EHS33NFF-198	Dust Ring	1
199	T030402020	EHS33NFF-199	Cover	1
200	T030402021	EHS33NFF-200-2	Piston Rod (2.5)	1
	T030402029	EHS33NFF-200-3	Piston Rod (3.0)	1
201	T030402022	EHS33NFF-201	Piston	1
202	T030402023	EHS33NFF-202	O-Ring	2
203	T030402024	EHS33NFF-203	O-Ring	1
204	T030402025	EHS33NFF-204	Seal	1
205	T030402026	EHS33NFF-205	Washer	1
206	T030402027	EHS33NFF-206	Elastic Washer	1
207	T030402028	EHS33NFF-207	Nut	1
208	D06520003	EHS33NFF-208	Connect shank	1
209	422040057	EHS33NFF-209	Fixed Plank	1
210	506040019	EHS33NFF-210	Round cover	1
214	30906200081	EHS33NFF-214	Key switch (with key)	1

9.2 EHS33N-98 / EHS33N-118 Part List

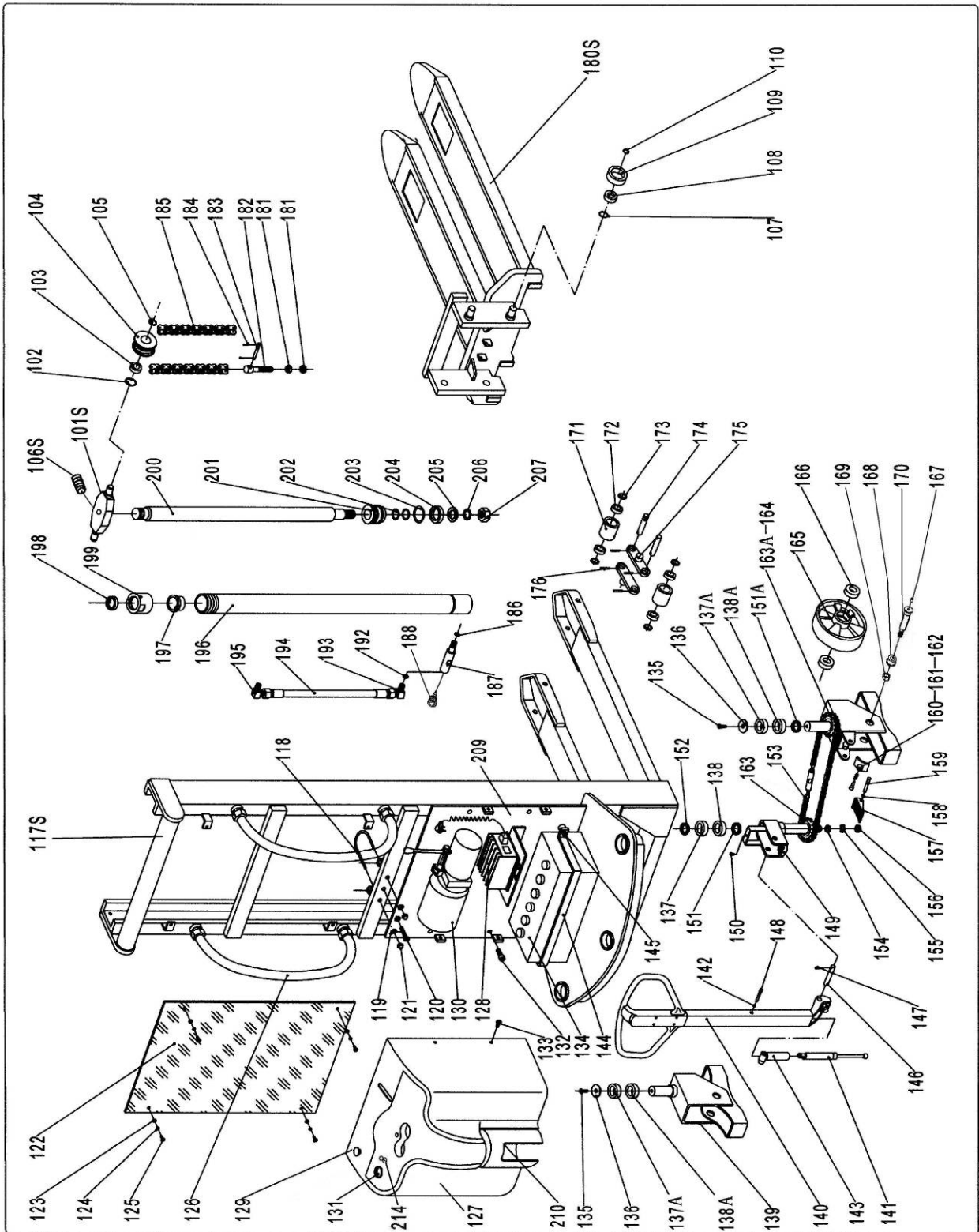


EHS33N-98 / EHS33N-118 Part List

No.	Code	Mobile #	Description	Qty.
101	D13560038	EHS33N-101-25	Inner Mast 1525	1
	T030403004	EHS33N-101-30	Inner Mast 1530	1
102	504040025	EHS33N-101	Locking Ring	2
103	349010119	EHS33N-102	Bearing	2
104	422260023	EHS33N-103	Roller For Chain	2
105	504030018	EHS33N-104	Locking Ring	2
106	5010808010C0	EHS33N-105	Screw	1
107	504030020	EHS33N-106	Locking Ring	8
108	349010121	EHS33N-107	Bearing	8
109	422660024	EHS33N-108	Roller	8
110	301799039	EHS33N-109	Washer	8
111	5010410020C0	EHS33N-110	Bolt	2
112	5010408040C0	EHS33N-111	Bolt	4
113	422670020	EHS33N-112	Crutch of Idler Pulley	2
114	301727005	EHS33N-113	Shaft	2
115	422660030	EHS33N-114	Idler Pulley	2
116	504030004	EHS33N-115	Locking Ring	2
117Y	D13560037	EHS33N-117Y-25	Mast 1525	1
	T030403006	EHS33N-117Y-30	Mast 1530	1
118	301727017	EHS33N-118	Hoop	1
119	502030005	EHS33N-119	Nut	3
120	50101010040	EHS33N-120	Bolt	1
121	502990006	EHS33N-121	Nut	2
122	422670027	EHS33N-122	Protecting Meshwork	1
	422670028		Protecting Meshwork	1
123	506030109	EHS33N-123	Protecting Washer	4
124	503010058	EHS33N-124	Washer	4
125	5010506016C0	EHS33N-125	Bolt	4
126	350240013	EHS33N-126	Handle	2
127	422640065	EHS33N-127	Cover	1
128	30910200005	EHS33N-128	Charger	1
129	30906200009	EHS33N-129	Urgent Switch	1
130	30916400402	EHS33N-130	Pump Station	1
131	30905100006	EHS33N-131	Voltage Meter	1
132	501990038	EHS33N-132		
133	5010605010C0	EHS33N-133	Bolt	4
134	30901500003	EHS33N-134	Battery	1
135	5010610016C0	EHS33N-135	Bolt	2
136	422570030	EHS33N-136	Cap	2
137A	349010121	EHS33N-137A	Bearing (6206)	2
137	349010119	EHS33N-137	Bearing (6205)	1
138A	622020032	EHS33N-138A	Bearing (30206)	2
138	349010145	EHS33N-138	Bearing (30205)	1
139	422670019	EHS33N-139	Seat of Wheel	1
140	G36040001	EHS33N-140	Draw-Bar for Turning	1
141	302990028A	EHS33N-141	Gas spring	1
142	504030002	EHS33N-142	Locking Ring	1
143	422660002	EHS33N-143	Seat of gas spring	1
144	D06510012	EHS33N-144	Hoop	1
145	5010408016C0	EHS33N-145	Bolt	2
146	422660005	EHS33N-146	Shaft	1
147	5010406012C0	EHS33N-147	Bolt	1
148	422660001	EHS33N-148	Shaft	1
149	D06510013	EHS33N-149	Seat of Draw-Bar	1
150	5010505010C0	EHS33N-150	Bolt	1
151	G36040002	EHS33N-151	Washer	1
151A	G36040004	EHS33N-151A	Washer	1
152	503010054	EHS33N-152	Washer	1
153	349030033	EHS33N-153	Chain	1
154	503010068	EHS33N-154	Washer	1
155	503020012	EHS33N-155	Washer	1

No.	Code	Mobile #	Description	Qty.
156	502040020	EHS33N-156	Nut	1
157	D01640004	EHS33N-157	Foot Plate	1
158	504030004	EHS33N-158	Locking Ring	1
159	301726012	EHS33N-159	Shaft	1
160	D01640003	EHS33N-160	Brake	1
161	302010116	EHS33N-161	Spring	1
162	422680028	EHS33N-162	Bolt	1
163	422680046	EHS33N-163	Sprocket Wheel	1
163A	349030011	EHS33N-163A	Sprocket Wheel	1
164	422670019	EHS33N-164	Seat of Turning Wheel	1
165	30301WH054	EHS33N-165	Big Wheel	2
166	349010113	EHS33N-166	Bearing	4
167	506060017	EHS33N-167	Oil holder (φ8)	2
168	422680037	EHS33N-168	Washer	2
169	502040012	EHS33N-169	Locking Nut	2
170	422660031A	EHS33N-170	Axle for wheel	2
171	30301WH017	EHS33N-171	Loading Roller	4
172	349010113	EHS33N-172	Bearing	8
173	503010036	EHS33N-173	Washer	8
174	301810037	EHS33N-174	Shaft	4
175	333050001	EHS33N-175	Linking Plate	4
176	505020088	EHS33N-176	Elastic Pin	8
180Y	D13560039	EHS33N-180Y	Fork Carriage	1
181	502030011	EHS33N-181	Nut	4
182	422680024	EHS33N-182	Bolt	2
183	505020031	EHS33N-183	Pin	4
184	505040010	EHS33N-184	Cotter pin	8
185	349030178	EHS33N-185-3	Chain: 3.0m	2
	349030179	EHS33N-185-2	Chain: 2.5m	2
186	504070041	EHS33N-186	O-Ring	1
187	351420015	EHS33N-187	Body of Adjusting Valve	1
188	G110203006	EHS33N-188	Adjusting Bolt	1
192	503030008	EHS33N-192	Seal Washer	1
193	422020186	EHS33N-193	Elbow Bend	1
194	30916400033	EHS33N-194	Vitta	1
195	422020187	EHS33N-195	Elbow Bend	1
196	351410003	EHS33N-196-25	Earthen Pipe 1525	1
	351410004	EHS33N-196-30	Earthen Pipe1530	1
197	T030402018	EHS33N-197	Sleeve	1
198	T030402019	EHS33N-198	Dust Ring	1
199	T030402020	EHS33N-199	Cover	1
200	T030402021	EHS33N-200-2	Piston Rod (2.5)	1
	T030402029	EHS33N-200-3	Piston Rod (3.0)	1
201	T030402022	EHS33N-201	Piston	1
202	T030402023	EHS33N-202	O-Ring	2
203	T030402024	EHS33N-203	O-Ring	1
204	T030402025	EHS33N-204	Seal	1
205	T030402026	EHS33N-205	Washer	1
206	T030402027	EHS33N-206	Elastic Washer	1
207	T030402028	EHS33N-207	Nut	1
208	D06520003	EHS33N-208	Connect shank	1
209	422040057	EHS33N-209	Fixed Plank	1
210	506040019	EHS33N-210	Round cover	1
211Y	504030023	EHS33N-211Y	Retaining ring	2
212Y	D05640010	EHS33N-212Y	Long shaft	1
213Y	422670015	EHS33N-213Y	Fork	2
214	30906200081	EHS33N-214	Key switch (with key)	1

9.3 EHS33NFF-63 Part List

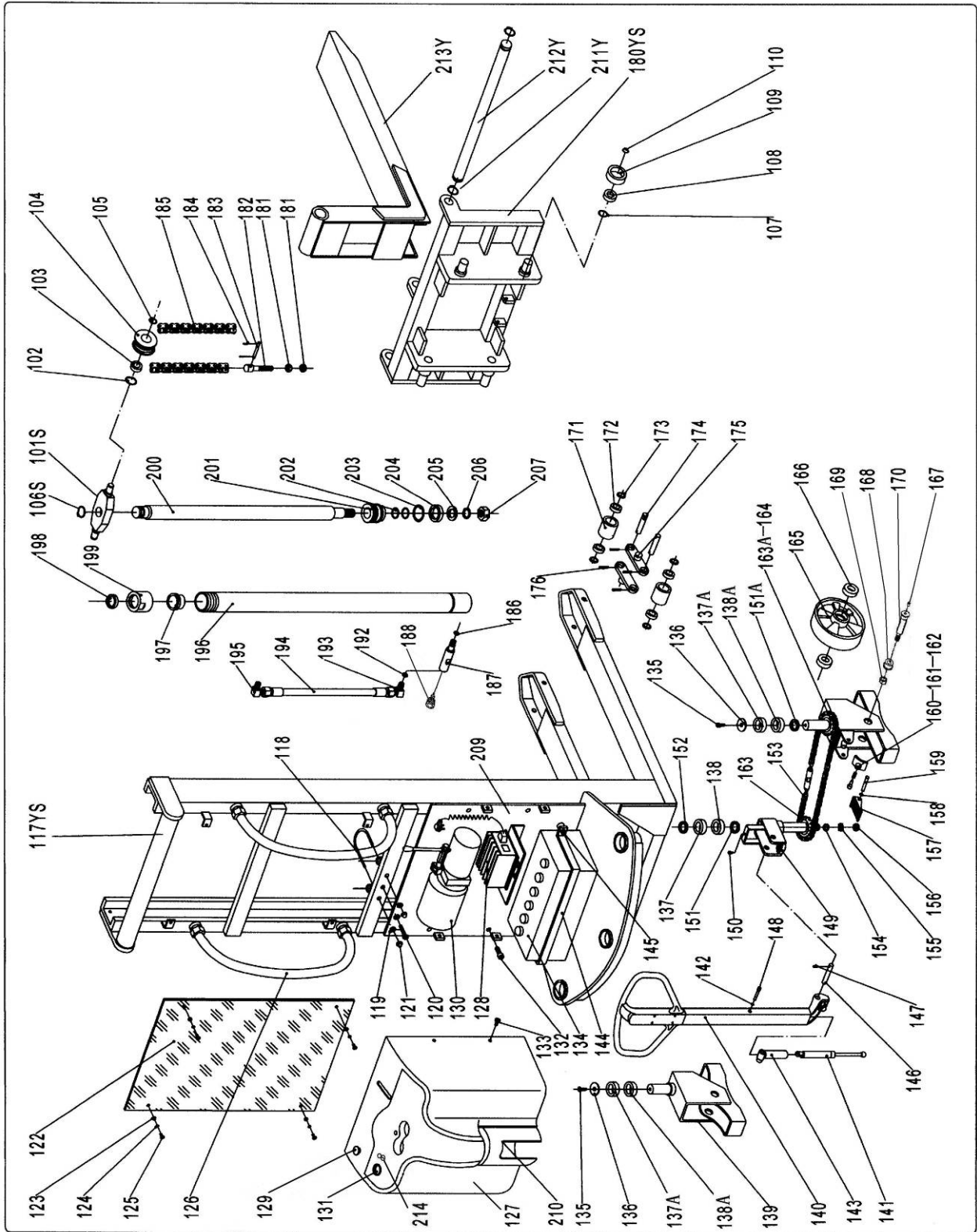


EHS33NFF-63 Part List

No.	Code	Mobile #	Description	Qty.
101S	422660013	EHS33NFF-101S	Holding plate	1
102	504040025	EHS33NFF-102	Locking Ring	2
103	349010119	EHS33NFF-103	Bearing	2
104	422260023	EHS33NFF-104	Roller For Chain	2
105	504030018	EHS33NFF-105	Locking Ring	2
106S	5010808010C0	EHS33NFF-106S	Screw	1
107	504030020	EHS33NFF-107	Locking Ring	4
108	349010121	EHS33NFF-108	Bearing	4
109	422660024	EHS33NFF-109	Roller	4
110	301799039	EHS33NFF-110	Washer	4
117S	D13560028	EHS33NFF-117S	Mast	1
118	301727017	EHS33NFF-118	Hoop	1
119	502030005	EHS33NFF-119	Nut	3
120	50101010040	EHS33NFF-120	Bolt	1
121	502990006	EHS33NFF-121	Nut	2
122	422670025	EHS33NFF-122	Protecting Meshwork	1
123	506030109	EHS33NFF-123	Protecting Washer	4
124	503010058	EHS33NFF-124	Washer	4
125	5010506016C0	EHS33NFF-125	Bolt	4
126	350240013	EHS33NFF-126	Handle	2
127	422640065	EHS33NFF-127	Cover	1
128	30910200005	EHS33NFF-128	Charger	1
129	30906200009	EHS33NFF-129	Urgent Switch	1
130	30916400402	EHS33NFF-130	Pump Station	1
131	30905100006	EHS33NFF-131	Voltage Meter	1
132	501990038	EHS33NFF-132	Bolt	4
133	5010605010C0	EHS33NFF-133	Bolt	4
134	30901500003	EHS33NFF-134	Battery	1
135	5010610016C0	EHS33NFF-135	Bolt	2
136	422570030	EHS33NFF-136	Cap	2
137A	349010121	EHS33NFF-137A	Bearing (60206)	2
137	349010119	EHS33NFF-137	Bearing (6205)	1
138A	622020032	EHS33NFF-138A	Bearing (30206)	2
138	349010145	EHS33NFF-138	Bearing (30205)	1
139	422670019	EHS33NFF-139	Seat of Wheel	1
140	G36040001	EHS33NFF-140	Draw-Bar for Turning	1
141	302990028A	EHS33NFF-141	Gas spring	1
142	504030002	EHS33NFF-142	Locking Ring	1
143	422660002	EHS33NFF-143	Seat of gas spring	1
144	D06510012	EHS33NFF-144	Hoop	1
145	5010408016C0	EHS33NFF-145	Bolt	2
146	422660005	EHS33NFF-146	Shaft	1
147	5010406012C0	EHS33NFF-147	Bolt	1
148	422660001	EHS33NFF-148	Shaft	1
149	D06510013	EHS33NFF-149	Seat of Draw-Bar	1
150	5010505010C0	EHS33NFF-150	Bolt	1
151	G36040002	EHS33NFF-151	Washer	1
151A	G36040004	EHS33NFF-151A	Washer	1
152	503010054	EHS33NFF-152	Washer	1
153	349030033	EHS33NFF-153	Chain	1
154	503010068	EHS33NFF-154	Washer	1
155	503020012	EHS33NFF-155	Washer	1

No.	Code	Mobile #	Description	Qty.
156	502040020	EHS33NFF-156	Nut	1
157	D01640004	EHS33NFF-157	Foot Plate	1
158	504030004	EHS33NFF-158	Locking Ring	1
159	301726012	EHS33NFF-159	Shaft	1
160	D01640003	EHS33NFF-160	Brake	1
161	302010116	EHS33NFF-161	Spring	1
162	422680028	EHS33NFF-162	Bolt	1
163	422680046	EHS33NFF-163	Sprocket Wheel (ϕ 25)	1
163A	349030011	EHS33NFF-163A	Sprocket Wheel (ϕ 30)	1
164	422670019	EHS33NFF-164	Seat of Turning Wheel	1
165	30301WH054	EHS33NFF-165	Big Wheel	2
166	349010113	EHS33NFF-166	Bearing	4
167	506060017	EHS33NFF-167	Oil holder (ϕ 8)	2
168	422680037	EHS33NFF-168	Washer	2
169	502040012	EHS33NFF-169	Locking Nut	2
170	422660031A	EHS33NFF-170	Axle for wheel	2
171	30301WH017	EHS33NFF-171	Loading Roller	4
172	349010113	EHS33NFF-172	Bearing	8
173	503010036	EHS33NFF-173	Washer	8
174	301810037	EHS33NFF-174	Shaft	4
175	333050001	EHS33NFF-175	Linking Plate	4
176	505020088	EHS33NFF-176	Elastic Pin	8
180S	D13560030	EHS33NFF-180S	Fork Carriage	1
181	502030011	EHS33NFF-181	Nut	4
182	422680024	EHS33NFF-182	Bolt	2
183	505020031	EHS33NFF-183	Pin	4
184	505040010	EHS33NFF-184	Cotter pin	8
185	349030130	EHS33NFF-185	Chain	2
186	504070041	EHS33NFF-186	O-Ring	1
187	351420015	EHS33NFF-187	Body of Adjusting Valve	1
188	G110203006	EHS33NFF-188	Adjusting Bolt	1
192	503030008	EHS33NFF-192	Seal Washer	1
193	422020186	EHS33NFF-193	Elbow Bend	1
194	30916400033	EHS33NFF-194	Vitta	1
195	422020187	EHS33NFF-195	Elbow Bend	1
196	351410001	EHS33NFF-196	Earthen Pipe	1
197	T030402018	EHS33NFF-197	Sleeve	1
198	T030402019	EHS33NFF-198	Dust Ring	1
199	T030402020	EHS33NFF-199	Cover	1
200	351420022	EHS33NFF-200	Piston Rod	1
201	T030402022	EHS33NFF-201	Piston	1
202	T030402023	EHS33NFF-202	O-Ring	2
203	T030402024	EHS33NFF-203	O-Ring	1
204	T030402025	EHS33NFF-204	Seal	1
205	T030402026	EHS33NFF-205	Washer	1
206	T030402027	EHS33NFF-206	Elastic Washer	1
207	T030402028	EHS33NFF-207	Nut	1
209	422040057	EHS33NFF-209	Fixed Plank	1
210	506040019	EHS33NFF-210	Round cover	1
214	30906200081	EHS33NFF-214	Key switch (with key)	1

9.4 EHS33N-63 Part List

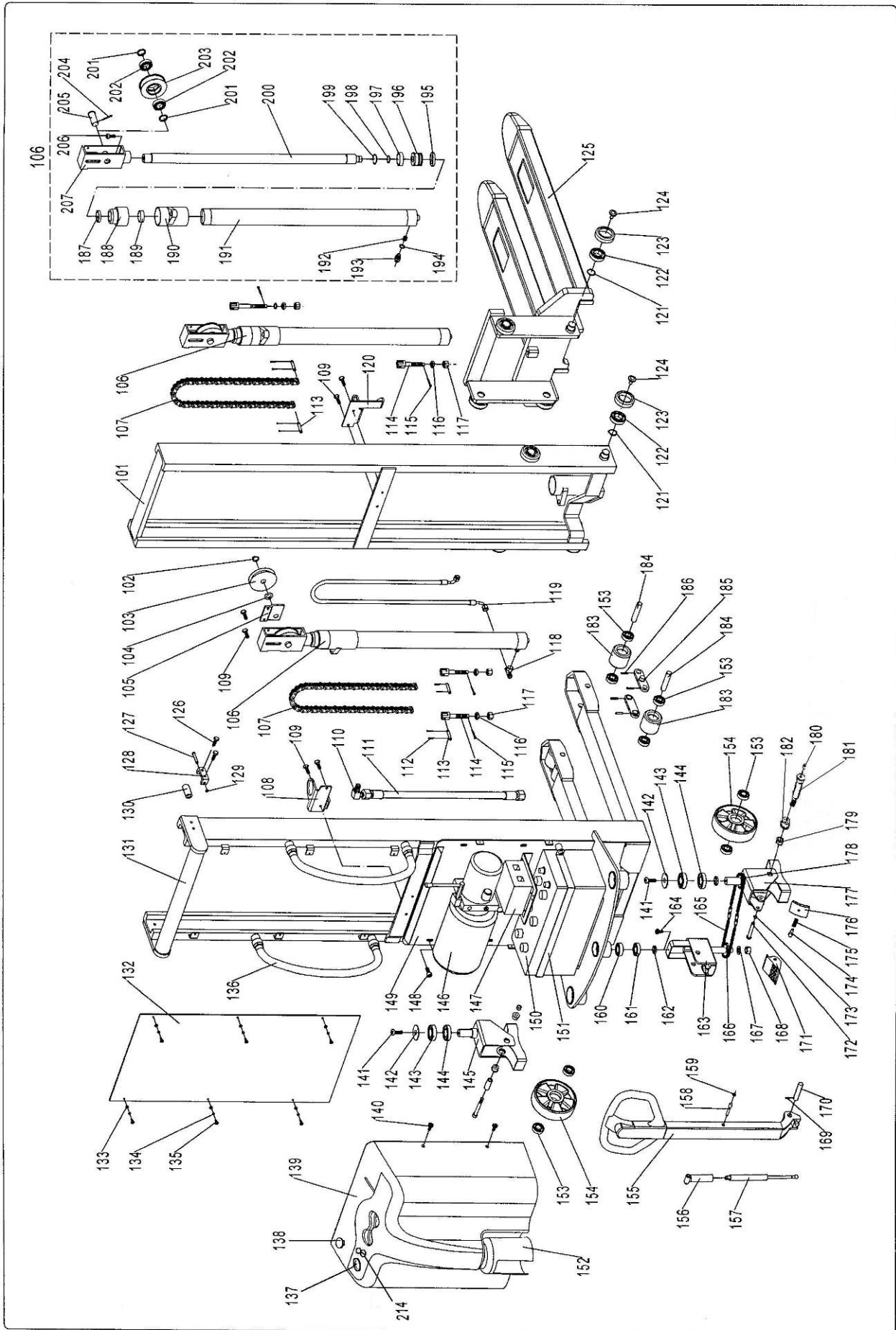


EHS33N-63 Part List

No.	Code	Mobile #	Description	Qty.
101S	422660013	EHS33N-101S	Holding plate	1
102	504040025	EHS33N-102	Locking Ring	2
103	349010119	EHS33N-103	Bearing	2
104	422260023	EHS33N-104	Roller For Chain	2
105	504030018	EHS33N-105	Locking Ring	2
106S	5010808010C0	EHS33N-106S	Retaining ring	1
107	504030020	EHS33N-107	Locking Ring	4
108	349010121	EHS33N-108	Bearing	4
109	422660024	EHS33N-109	Roller	4
110	301799039	EHS33N-110	Washer	4
117YS	D13560031	EHS33N-117YS	Mast	1
118	301727017	EHS33N-118	Hoop	1
119	502030005	EHS33N-119	Nut	3
120	50101010040	EHS33N-120	Bolt	1
121	502990006	EHS33N-121	Nut	2
122	422670027	EHS33N-122	Protecting Meshwork	1
123	506030109	EHS33N-123	Protecting Washer	4
124	503010058	EHS33N-124	Washer	4
125	5010506016C0	EHS33N-125	Bolt	4
126	350240013	EHS33N-126	Handle	2
127	422640065	EHS33N-127	Cover	1
128	30910200005	EHS33N-128	Charger	1
129	30906200009	EHS33N-129	Urgent Switch	1
130	30916400402	EHS33N-130	Pump Station	1
131	30905100006	EHS33N-131	Voltage Meter	1
132	501990038	EHS33N-132	Bolt	4
133	5010605010C0	EHS33N-133	Bolt	4
134	30901500003	EHS33N-134	Battery	1
135	5010610016C0	EHS33N-135	Bolt	2
136	422570030	EHS33N-136	Cap	2
137A	349010121	EHS33N-137A	Bearing (6206)	2
137	349010119	EHS33N-137	Bearing (6205)	1
138A	622020032	EHS33N-138A	Bearing (30206)	2
138	349010145	EHS33N-138	Bearing (30205)	1
139	422670019	EHS33N-139	Seat of Wheel	1
140	G36040001	EHS33N-140	Draw-Bar for Turning	1
141	302990028A	EHS33N-141	Gas spring	1
142	504030002	EHS33N-142	Locking Ring	1
143	422660002	EHS33N-143	Seat of gas spring	1
144	D06510012	EHS33N-144	Hoop	1
145	5010408016C0	EHS33N-145	Bolt	2
146	422660005	EHS33N-146	Shaft	1
147	5010406012C0	EHS33N-147	Bolt	1
148	422660001	EHS33N-148	Shaft	1
149	D06510013	EHS33N-149	Seat of Draw-Bar	1
150	5010505010C0	EHS33N-150	Bolt	1
151	G36040002	EHS33N-151	Washer	1
151A	G36040004	EHS33N-151A	Washer	1
152	503010054	EHS33N-152	Washer	1
153	349030033	EHS33N-153	Chain	1
154	503010068	EHS33N-154	Washer	1
155	503020012	EHS33N-155	Washer	1
156	502040020	EHS33N-156	Nut	1
157	D01640004	EHS33N-157	Foot Plate	1

No.	Code	Mobile #	Description	Qty.
158	504030004	EHS33N-158	Locking Ring	1
159	301726012	EHS33N-159	Shaft	1
160	D01640003	EHS33N-160	Brake	1
161	302010116	EHS33N-161	Spring	1
162	422680028	EHS33N-162	Bolt	1
163	422680046	EHS33N-163	Sprocket Wheel (ϕ 25)	1
163A	349030011	EHS33N-163A	Sprocket Wheel (ϕ 30)	1
164	422670019	EHS33N-164	Seat of Turning Wheel	1
165	30301WH054	EHS33N-165	Big Wheel	2
166	349010113	EHS33N-166	Bearing	4
167	506060017	EHS33N-167	Oil holder (ϕ 8)	2
168	422680037	EHS33N-168	Washer	2
169	502040012	EHS33N-169	Locking Nut	2
170	422660031A	EHS33N-170	Axle for wheel	2
171	30301WH017	EHS33N-171	Loading Roller	4
172	349010113	EHS33N-172	Bearing	8
173	503010036	EHS33N-173	Washer	8
174	301810037	EHS33N-174	Shaft	4
175	333050001	EHS33N-175	Linking Plate	4
176	505020088	EHS33N-176	Elastic Pin	8
180YS	D13560033	EHS33N-180YS	Fork Carriage	1
181	502030011	EHS33N-181	Nut	4
182	422680024	EHS33N-182	Bolt	2
183	505020031	EHS33N-183	Pin	4
184	505040010	EHS33N-184	Cotter pin	8
185	349030130	EHS33N-185	Chain	2
186	504070041	EHS33N-186	O-Ring	1
187	351420015	EHS33N-187	Body of Adjusting Valve	1
188	G110203006	EHS33N-188	Adjusting Bolt	1
192	503030008	EHS33N-192	Seal Washer	1
193	422020186	EHS33N-193	Elbow Bend	1
194	30916400033	EHS33N-194	Vitta	1
195	422020187	EHS33N-195	Elbow Bend	1
196	351410001	EHS33N-196	Earthen Pipe	1
197	T030402018	EHS33N-197	Sleeve	1
198	T030402019	EHS33N-198	Dust Ring	1
199	T030402020	EHS33N-199	Cover	1
200	351420022	EHS33N-200	Piston Rod	1
201	T030402022	EHS33N-201	Piston	1
202	T030402023	EHS33N-202	O-Ring	2
203	T030402024	EHS33N-203	O-Ring	1
204	T030402025	EHS33N-204	Seal	1
205	T030402026	EHS33N-205	Washer	1
206	T030402027	EHS33N-206	Elastic Washer	1
207	T030402028	EHS33N-207	Nut	1
209	422040057	EHS33N-209	Fixed Plank	1
210	506040019	EHS33N-210	Round cover	1
211Y	504030023	EHS33N-211Y	Retaining ring	2
212Y	D05640010	EHS33N-212Y	Long shaft	1
213Y	422670015	EHS33N-213Y	Fork	2
214	30906200081	EHS33N-214	Key switch (with key)	1

9.5 EHS33FFLN-114 Part List



EHS33FFLN-114 Part List

No.	Code	Description	Qty.	No.	Code	Description	Qty.
101	T030403010	Inner Mast	1	155	304010009	Draw-Bar for Turning	1
102	504030013	Locking Ring	1	156	422660002	Seat of gas spring	1
103	422160028	Chain wheel	1	157	302990028	Gas spring	1
104	503010028	Washer	1	158	422660001	Shaft	1
105	422160052	Seat of chain wheel	1	159	504030002	Locking Ring	1
106	351410006	cylinder	2	160	349010119	Bearing	1
107	349030033	Chain	2	161	349010145	Bearing	1
108	T030403011	bracket	1	162	G36040002	Washer	1
109	5010408016C0	Screw	6	163	D06510013	Seat of Draw-Bar	1
110	T030402002	Connection	1	164	5010505010C0	Bolt	1
111	T030402003	Hose	1	165	349030002	Chain	1
112	505040030	Cotter pin	8	166	422680046	Sprocket Wheel	1
113	301799007	Pin	4	167	503010068	Washer	1
114	422160020	Bolt	4	168	502040020	Nut	1
115	505040005	Cotter pin	4	169	5010406012C0	Bolt	1
116	502020004	Nut	4	170	422660005	Shaft	1
117	502030013	Nut	4	171	D01640004	Foot Plate	1
118	422020185	Connection	1	172	301726012	Shaft	1
119	318D0812190N20	Hose	1	173	504030004	Locking Ring	1
120	T030403012	bracket	1	174	422680028	Bolt	1
121	504030020	Locking Ring	8	175	302010115	Spring	1
122	349010121	Bearing	8	176	D01640003	Brake	1
123	422660024	Roller	8	177	422670019	Seat of Turning Wheel	1
124	301799039	Washer	8	178	349030011	Sprocket Wheel	1
125	D14360002	Fork Carriage	1	179	502040012	Locking Nut	2
126	5010408040C0	Screw	4	180	506060017	Oil holder (φ8)	2
127	301727005	Shaft	2	181	422660031A	Axle for wheel	2
128	422670020	Crutch of Idler Pulley	2	182	422680037	Washer	2
129	504030004	Locking Ring	2	183	30301WH017	Loading Roller	4
130	422670007	Idler Pulley	2	184	301810037	Shaft	4
131	D13330005	Mast	2	185	333050001	Linking Plate	4
132	422670025	Protecting Meshwork	1	186	505020088	Elastic Pin	8
133	506030109	Protecting Washer	1	187	T030402004	Dust Ring	2
134	503010058	Washer	6	188	T030402005	Cover	2
135	5010506016C0	Bolt	6	189	T030402006	Sleeve	2
136	350240013	Handle	6	190	T030402007	Seat of bolt	2
137	30905100006	Voltage Meter	2	191	T030402008	Cylinder pipe	2
138	30906200009	Urgent Switch	1	192	T030402009	Valve	2
139	422640065	Cover	1	193	T030402010	Connection	2
140	5010605010C0	Bolt	1	194	T030402011	Seal Washer	2
141	5010610016C0	Bolt	4	195	T030402012	Seal	2
142	422570030	Cap	2	196	T030402013	Piston	2
143	349010121	Bearing	2	197	T030402014	Sleeve	2
144	349010145	Bearing	2	198	T030402015	Locking Ring	2
145	422670019	Seat of Wheel	2	199	T030402016	Locking Ring	2
146	30916400402	Pump Station	1	200	T030402017	Piston Rod	2
147	30910200005	Charger	1	201	503010051	Washer	4
148	501990038	Bolt	1	202	349010119	Bearing	4
149	422040057	Fixed Plank	4	203	422160007	Roller For Chain	2
150	30901500003	Battery	1	204	505040021	Cotter pin	2
151	D06510012	Hoop	1	205	301799006	Shaft	2
152	506040019	Round cover	1	206	5010410020C0	Bolt	2
153	349010113	Bearing	1	207	D06100013	Seat of roller	2
154	30301WH054	Big Wheel	12	214	30906200081	Key switch (with key)	1

version number: 090720



MOBILE INDUSTRIES, INC.
3750B Laird Rd - Unit 2 & 3
Mississauga ON, L5L 0R6
Canada

Toll Free: 1 800 527 4612 • Local 905 279 5370
Email: info@mobilept.com

MOBILEPT.COM