

PARTS LIST

ESLS11 SELF-LIFTING STACKER

VERSION	MAY 2023
MODEL	ESLS11 SELF-LIFTING STACKER
APPLICABLE PRODUCTS	ESLS11

NOTE: Please read and understand the safety instructions prior to use. Please save for future reference.

Catalogue

FIG. 1 LABEL (FOR EU).....	2
FIG. 2 LABEL (FOR US).....	3
FIG. 3 LOAD WHEEL ASSEMBLY.....	4
FIG. 4 TRUCK BODY ASSEMBLY.....	5
FIG. 5 HANDLE ASSEMBLY	6
FIG. 6 MAST ASSEMBLY	7
FIG. 7 PALLET ASSEMBLY	9
FIG. 8 HYDRAULIC ASSEMBLY	11
FIG. 9 PUMP ASSEMBLY.....	12
FIG. 10 CYLINDER ASSEMBLY	14
FIG. 11 ELECTRICAL ASSEMBLY	16
FIG. 12 ELECTRICAL ASSEMBLY	18
FIG. 13 ELECTRICAL DRAWING.....	19
FIG. 14 MAIN CABLE DIAGRAM	20
EASY WORN PARTS LIST	21

Fig. 1 Label (for EU)

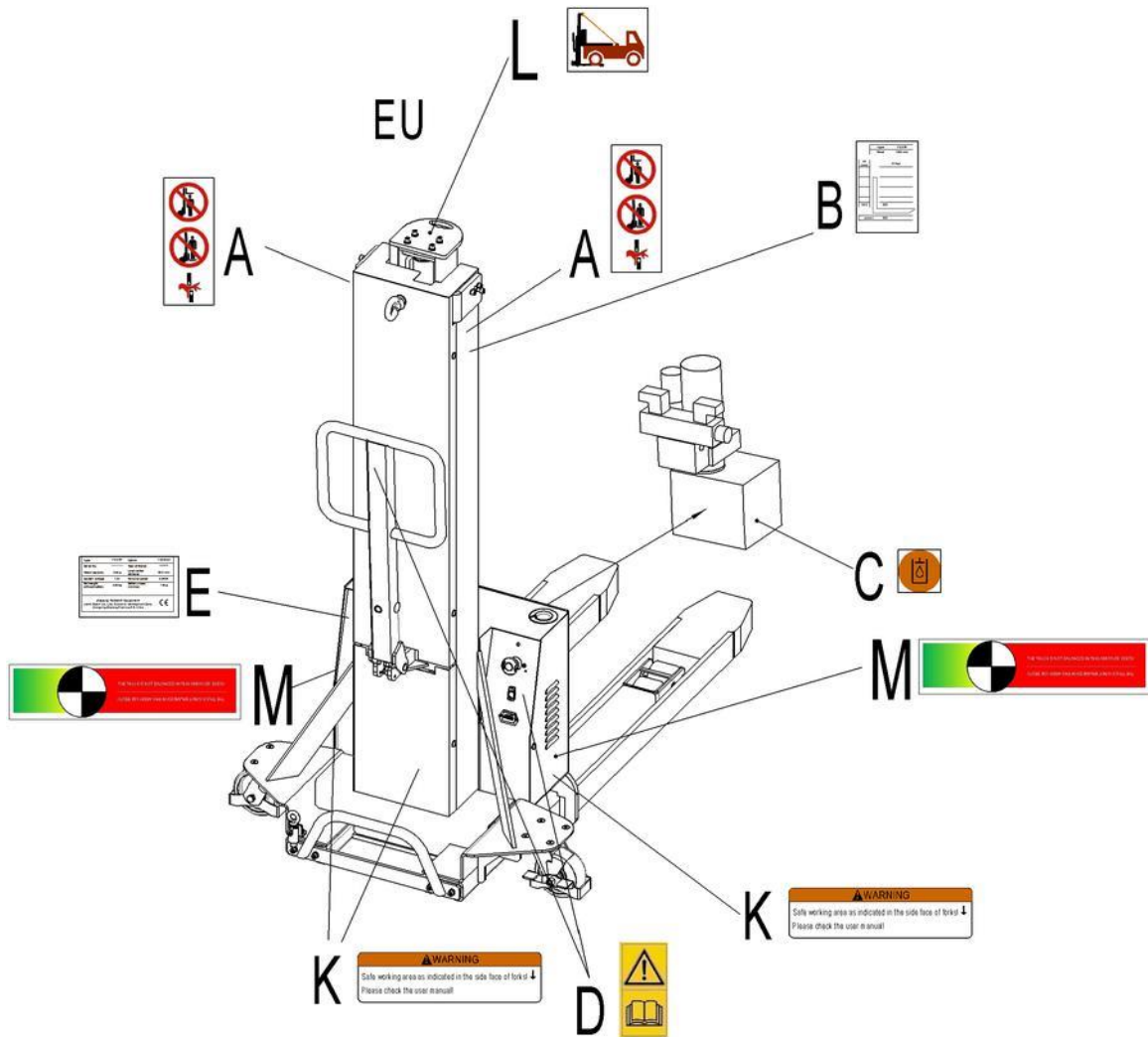


Fig. 1 Label (For US)

No.	Art No.	Description	Qty.	Note
A	941200100004	Warning decal: Do not step under or on the forks	2	
B	403547020000	Residual lift capacity sticker	2	
C	941200300003	Filling sticker	1	
D	941200300002	Sticker to read and follow these instructions	2	
E	403547020001	CE	1	
K	941200100025	Warning label	3	
L	403547020002	The using instruction of safety belt	1	
M	403547020003	Warning label	2	

Fig. 2 Label (for US)

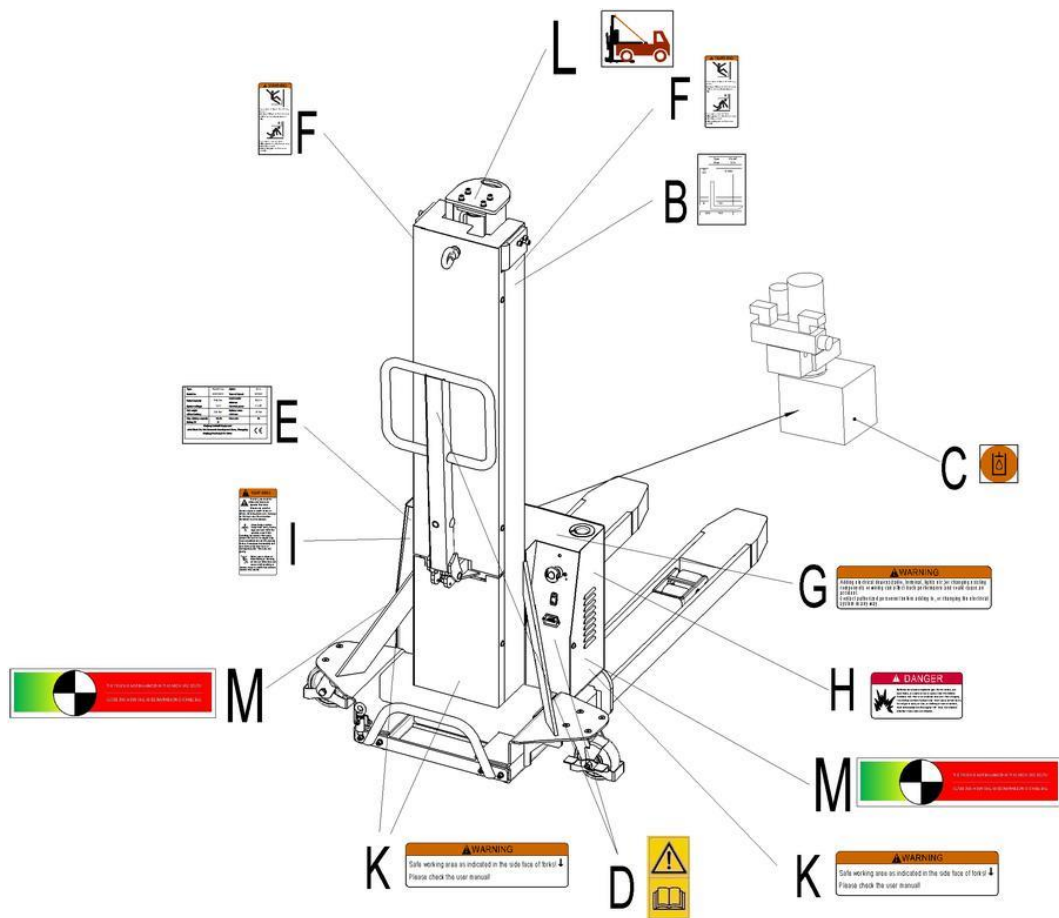


Fig. 2 Label (for US)

No.	Art No.	Description	Qty.	Note
B	403547020000	Residual lift capacity sticker	1	
C	941200300003	Filling sticker	1	
D	941200300002	Sticker to read and follow these instructions	2	
E	403547020001	CE label	1	
F	941200100016	Warning label	2	
G	941200100010	Warning label	1	
H	941200100013	Warning label	1	
I	941200100009	Warning label	1	
K	941200100025	Warning label	3	
L	403547020002	The using instruction of safety belt	1	
M	403547020003	Warning label	2	

Fig. 3 Load wheel assembly

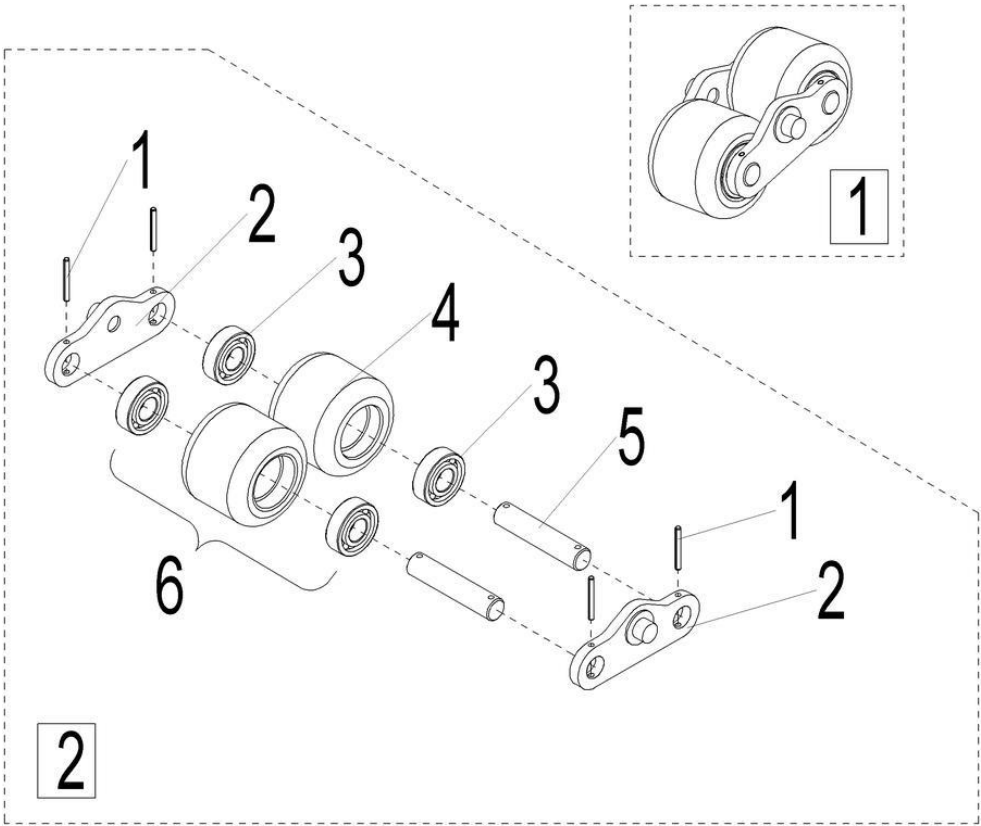


Fig. 3 Load Wheel Assembly

No.	Art No.	Description	Qty.	Note
1	910600400015	Dowel pin	8	4x30
2	403517010000	Linking plate	4	
3	910700200018	Bearing 6203	8	
4	940300202007	Wheel	4	74x60
5	403517020002	Wheel axle	4	17x78
6	403598510001	Wheel assembly	4	LZ-PS05F-SF-1
①	403517001000	Load wheel assembly	2	

Fig. 4 Truck body assembly

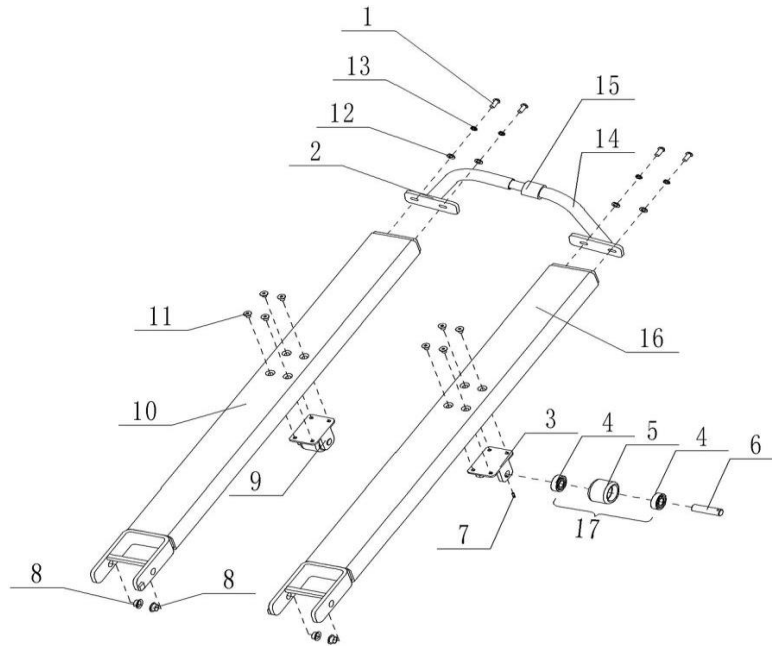


Fig. 4 Truck Body Assembly

No.	Art No.	Description	Qty.	Note
1	910200200055	Screw	4	M8x16
2	403521510006	Handle(right)	1	
3	403521510003	Transition wheel frame	2	
4	910700200018	Bearing 6203	4	
5	940300202010	Transition wheel	2	
6	403521520009	Transition wheel axle	2	
7	910600400009	Dowel pin	2	4x13
8	940500200001	Bushing	4	15x17x9
9	403521510002	Transition wheel assembly	2	
10	403521510004	Leg(right)	1	(540x1050)
11	910200400024	Screw	8	M8x16
12	910400100006	Washer	4	8
13	910400500006	Washer	4	8
14	403521510000	Handle(left)	1	
15	403521520011	Protective sleeve	1	
16	403521510001	Leg (left)	1	
17	403598510000	Wheel assembly	2	LZ-PS05F-SF-3

Fig.5 Handle assembly

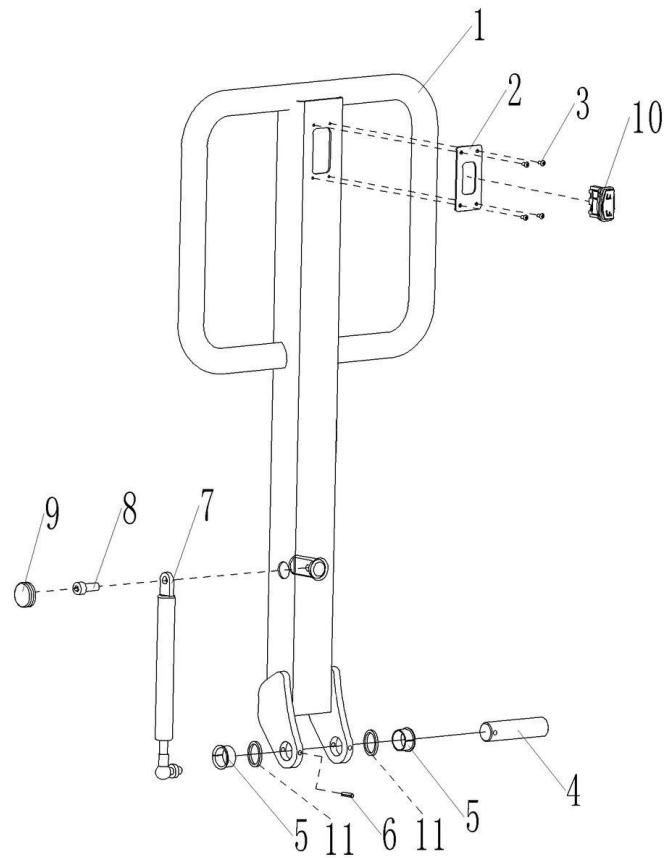


Fig. 5 Handle Assembly

No.	Art No.	Description	Qty.	Note
1	403511010000	Handle	1	
2	403511020004	Button fixing plate	1	
3	910200300003	Screw	4	M3x8
4	403511020003	Handle axle	1	20x78
5	940500200005	Bushing	2	20x22x12
6	910600400009	Dowel pin	1	4x13
7	940400100003	Air spring	1	
8	910200200057	Screw	1	M8x20
9	502311020009	Cover	1	
10	920200800004	Rocker switch	1	3203-00092-OV
11	940600500011	Washer	2	φ 28x φ 22.5x2.5

Fig. 6 Mast assembly

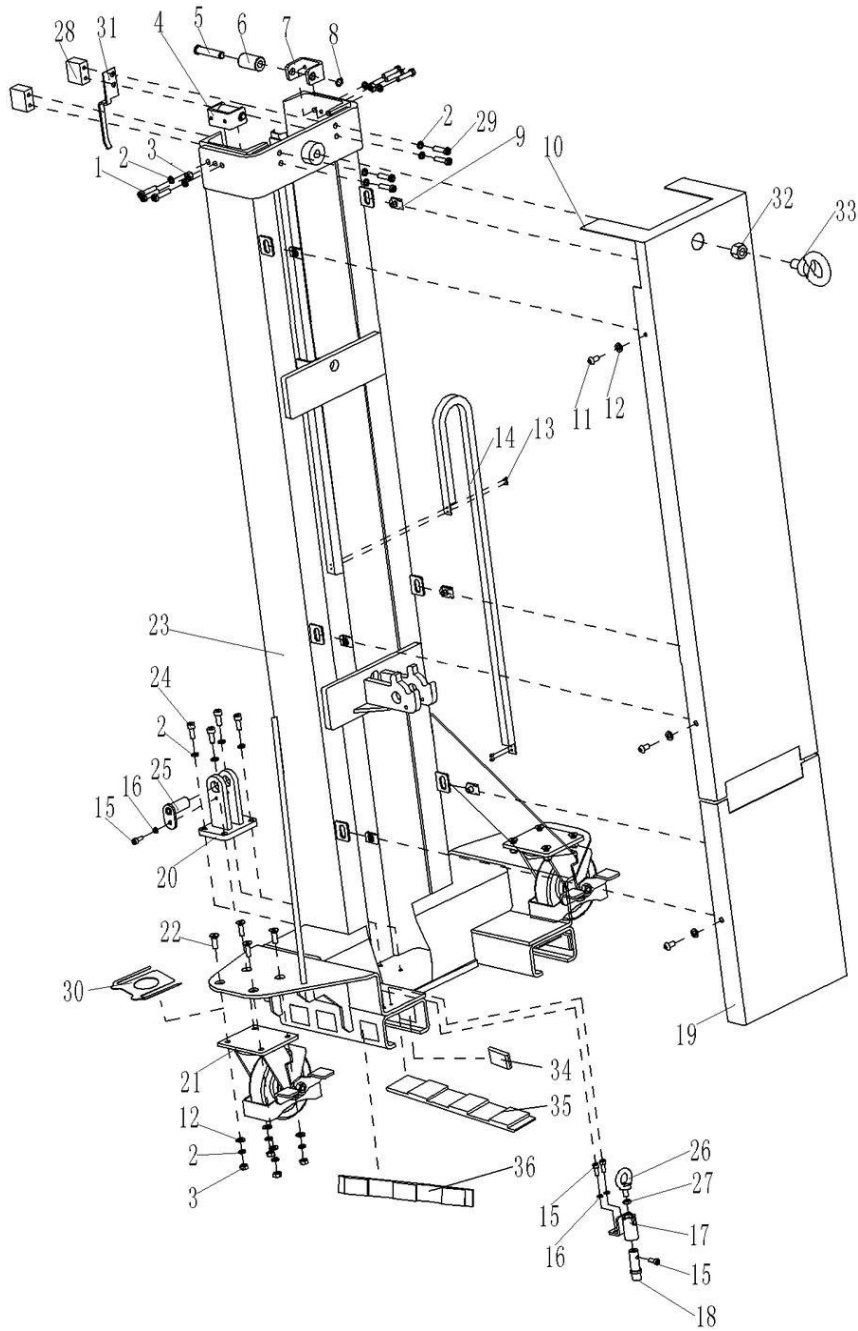


Fig. 6 Mast Assembly

No.	Art No.	Description	Qty.	Note
1	910200200061	Screw	6	M8x40
2	910400500006	Washer	20	8
3	910300100006	Nut	10	M8
4	403544010006	Guide castor assembly	2	
5	401744020001	Short axle	2	

6	401744020000	Guide wheel	2	
7	403544020026	Wheel seat	2	
8	910401300003	Circlip	2	12
9	940400400002	Nut	6	M8
10	403544010000	Mast cover 1	1	(1300)
	403544010007	Mast cover 1	1	(800)
11	910200300024	Screw	6	M8x16
12	910400100006	Washer	14	8
13	910200300003	Screw	2	M3x10
14	403544010009	Plastic drag chain	1	10x10x20,0.94M(1300)
	403544010010	Plastic drag chain	1	10x10x20,0.58M(800)
15	910200200035	Screw	4	M6x16
16	910400500005	Washer	3	6
17	403544010004	Plug seat	1	
18	403544020023	Locating pin	1	
19	403544020002	Mast cover 2	1	
20	403544010002	Cylinder seat	1	
21	346616501000	Steering wheel	2	
22	910200400026	Screw	8	M8x25
23	403544010001	Mast	1	(1300;540x1050)
	403544010008	Mast	1	(800;540x1050)
24	910200200057	Screw	4	M8x20
25	403544010005	Dowel pin	1	
26	910201700001	Screw	1	M8
27	910300300004	Nut	1	M8
28	403544020025	Limit block	2	
29	910200200058	Screw	4	M8x25
30	505616520014	Wash	4	
31	403544020028	Bend board	1	
32	910300100010	Nut	1	M16
33	910201700003	screw	1	M16x25
34	403544020035	Nylon slider	2	
35	403544020033	Nylon slider	2	
36	403544020034	Nylon slider	2	

Fig. 7 Pallet assembly

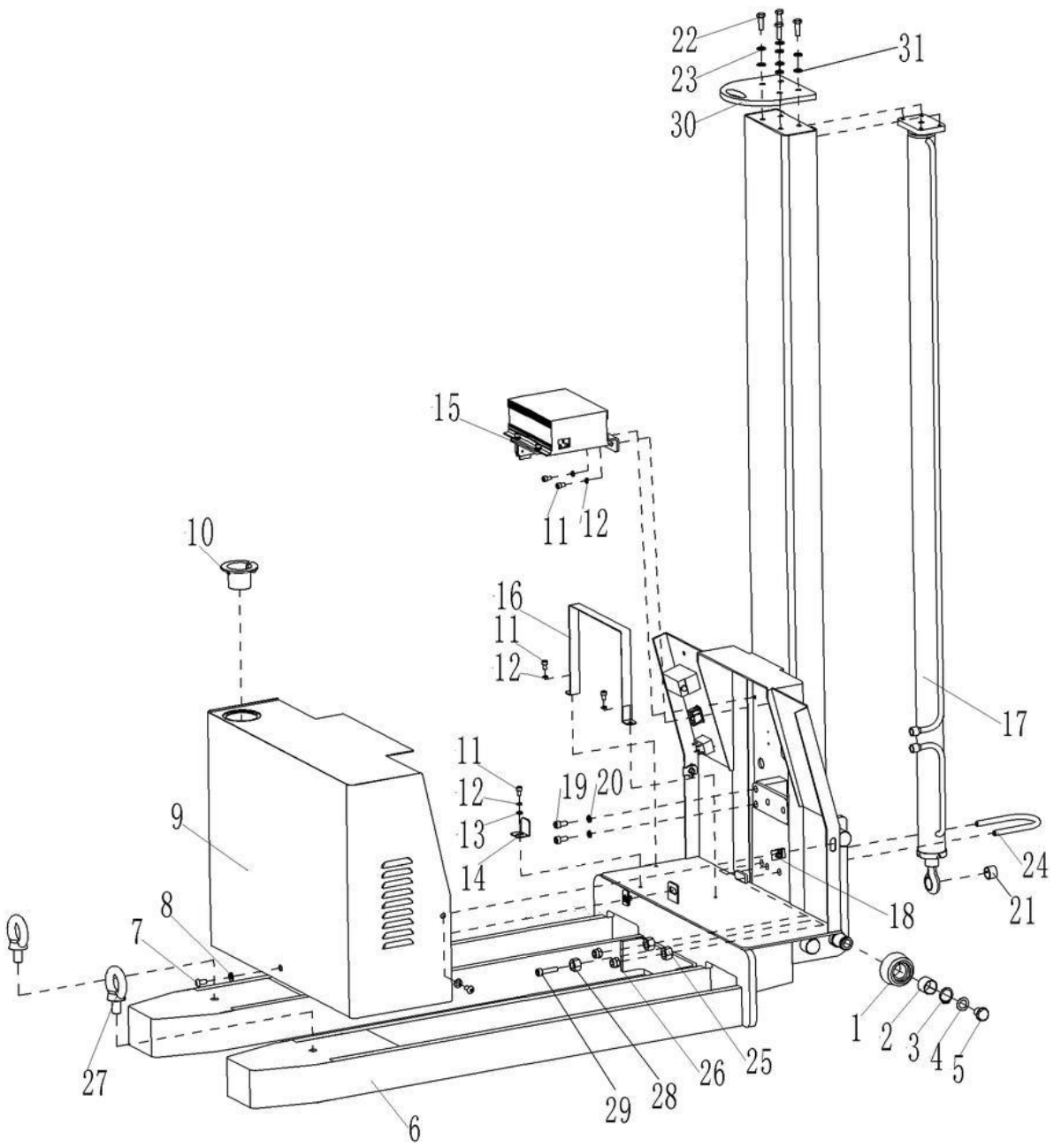


Fig. 7 Pallet Assembly

No.	Parts No.	Description	Qty.	Note
1	403538020027	Roller	4	Φ 51xΦ28x32
	403538020032			Φ 49.5xΦ28x32
2	940500100028	Bushing	4	25x28x22
3	910401300014	Circlip	4	25
4	911100100002	Disk spring	4	16
5	533213520016	Adjusting block	4	
6	403538010000	Fork	1	(1300;540x1050)
	403538010004	Fork	1	(800;540x1050)
7	910200300024	Screw	3	M8x16
8	910400100006	Washer	7	8
9	403538010002	Cover	1	
10	504121520029	Spring cord holder	1	
11	910200200035	Screw	5	M6x16
12	910400500005	Washer	5	6
13	910400100005	Washer	1	6
14	403537020001	Battery limit board	1	
15	403538020031	Charger fixing plate	1	
16	403537020000	Battery fixing clip	1	
17	403538010001	Hydraulic cylinder assembly	1	(1300)
	403538010005	Hydraulic cylinder assembly	1	(800)
18	940400400002	Nut	3	M8
19	910200200074	Screw	2	M10x16
20	910400500007	Washer	2	10
21	940500100017	Bushing	1	20x23x15
22	910200200060	Screw	4	M8x35
23	910400500006	Washer	4	8
24	201044520017	Cylinder fixing ring	1	
25	910300100008	Nut	2	M12
26	910300500005	Nut	2	M10
27	910201700003	Lifting bolt	2	M16x25
28	910300100007	Nut	1	M10
29	910200200080	screw	1	M10x45
30	403538020030	safety belt fixing plate	1	

Fig. 8 Hydraulic assembly

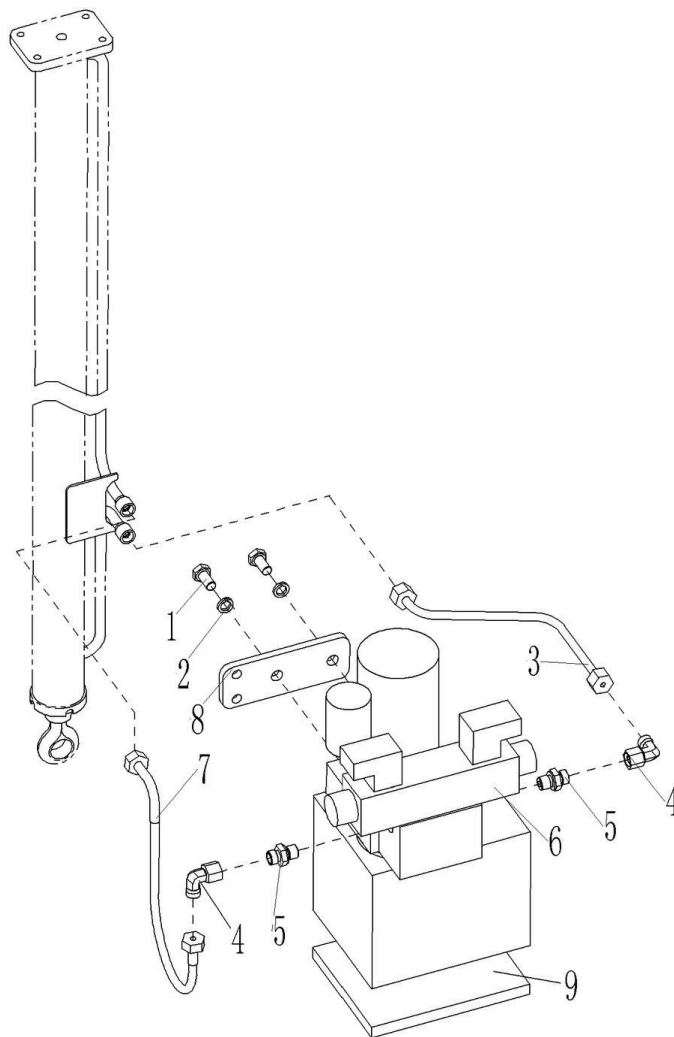


Fig.8 Hydraulic Assembly

No.	Parts No.	Description	Qty.	Note
1	910100100116	Bolt	2	M10x20
2	910400500007	Washer	2	10
3	403524010002	Hydraulic steel pipe	1	
4	950400200002	Elbow	2	M14
5	950400300003	G joint	2	
6	950900100025	Weibo pump	1	DC12/0.8KW
7	505624020003	90° hydraulic hose	1	
8	403538020021	Pump fixing plate	1	
9	403524020000	Rubber pad	1	

Fig. 9 Pump assembly

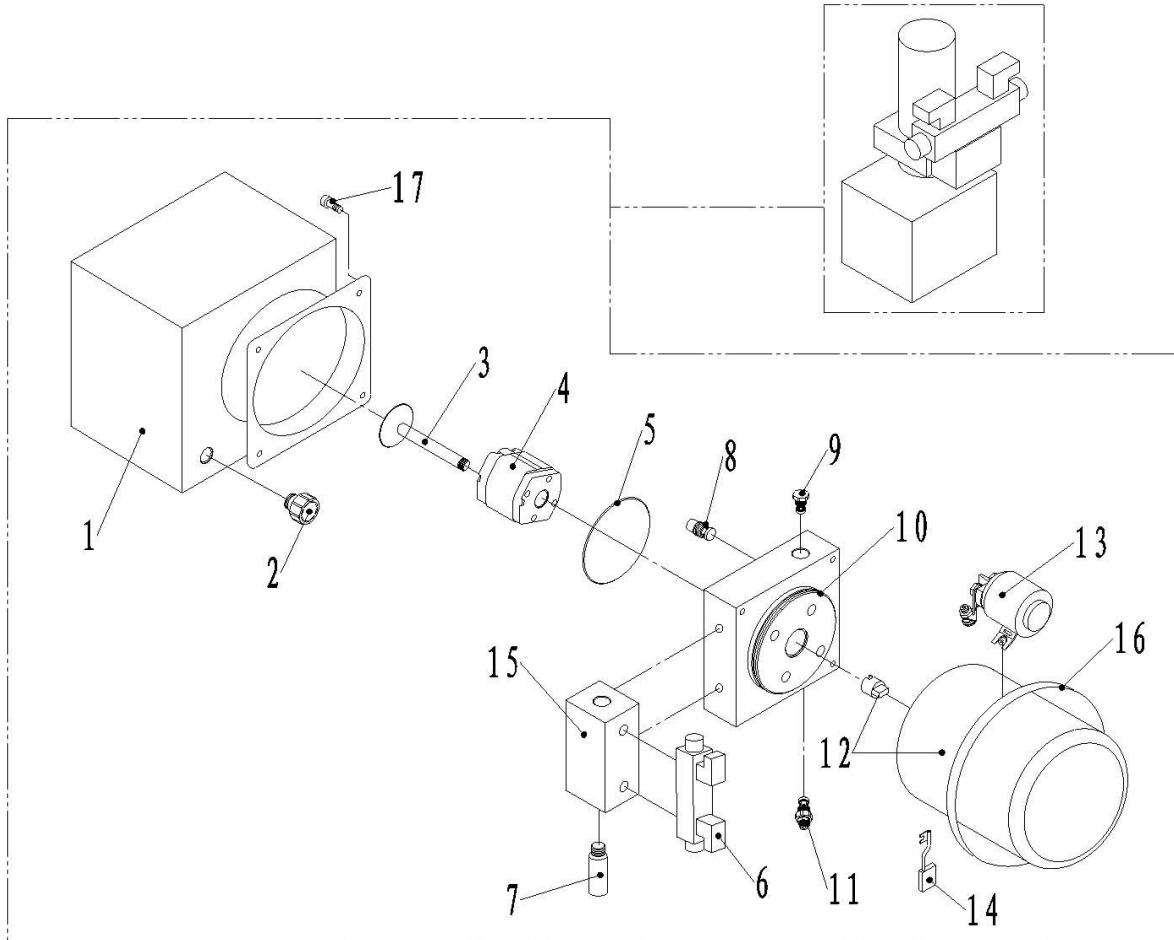


Fig. 9 Pump Assembly

No.	Parts No.	Description	Qty.	Note
1	403598520001	Oil cylinder	1	
2	403598520002	Oil filler plug	1	
3	403598520003	Oil filter	1	
4	403598520004	Gear pump	1	
5	910800100064	O-ring	1	
6	403598520005	Two-way solenoid valve	1	
7	403598520006	Transition joint	1	
8	403598520007	Throttle valve	1	
9	403598520008	Check valve	1	
10	403598520009	Center valve	1	
11	403598520010	Overflow valve	1	
11	950600300004	Overflow valve	1	
12	403598510002	Motor	1	
13	403598520011	Pump contactor	1	
14	403598520012	Motor carbon brush	1	
15	403598520013	Stack block	1	
16	403598520014	Hoop	1	
17	910100300002	Screw	4	

Fig. 10 Cylinder assembly

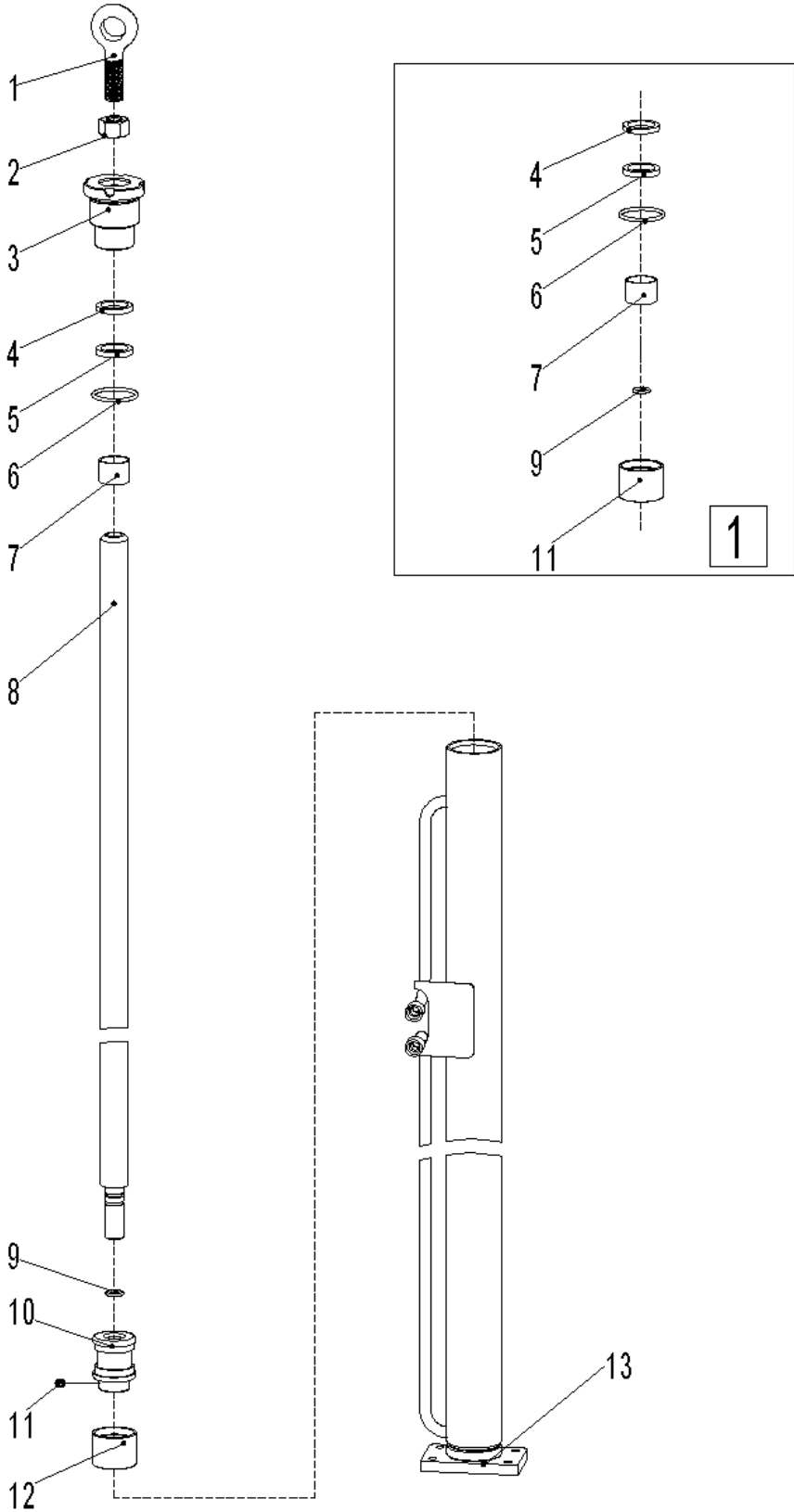


Fig. 10 Cylinder Assembly

No.	Parts No.	Description	Qty.	Note
1	403598520015	Linking ring	1	
2	910300400006	Nut	1	M16x1.5
3	403598520000	End cover	1	
4	910800400007	Dust ring	1	25X33X4.5/6
5	534498520001	Shaft seal	1	25X33X5/5.7
6	403598520023	O-ring	1	39.4X3.1
7	403598520016	Copper bushing	1	25X28X20
8	403598520017	Piston rod	1	(1300)
	403598520018	Piston rod	1	(800)
9	910800100039	O-ring	1	18x2.4
10	403598520019	Piston	1	
11	910200800010	Lock screw	1	M6X8
12	403598520020	Ring	1	40X30X16.4X6.35
13	403598520021	Cylinder body	1	(1300)
	403598520022	Cylinder body	1	(800)
①	403598510003	Cylinder seal kits	1	LZ-PS05F-SF-2

Fig.11 Electrical assembly

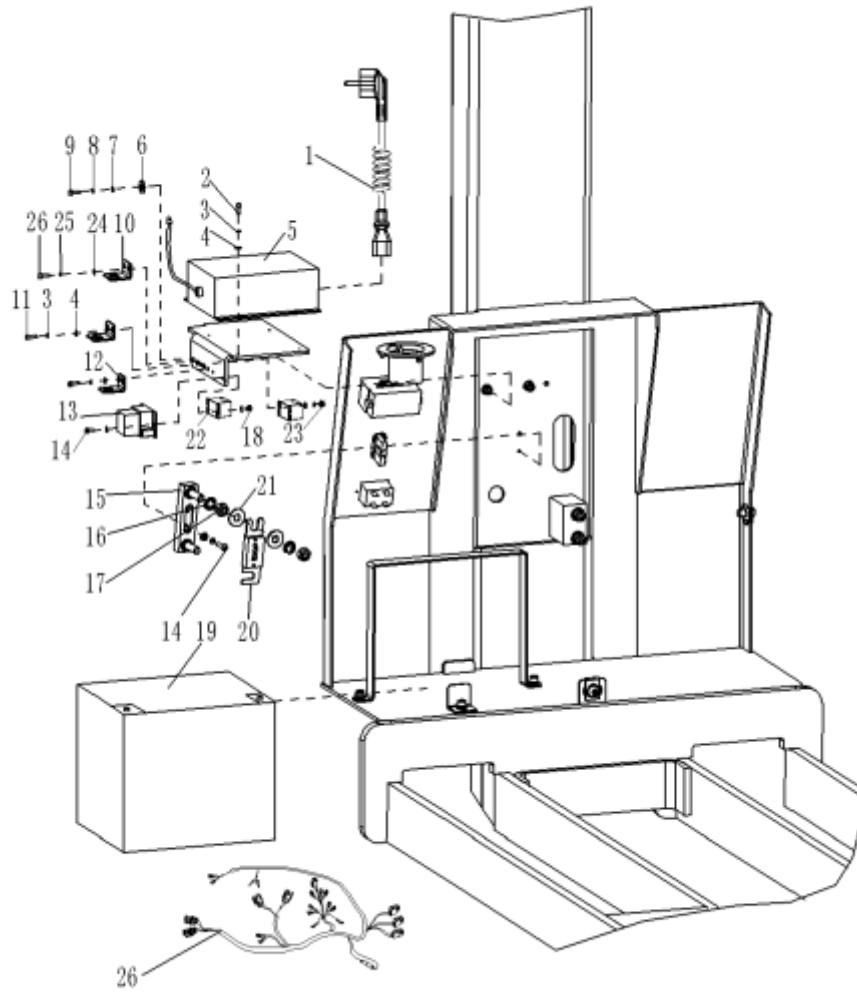


Fig. 11 Electrical Assembly

No.	Parts No.	Description	Qty.	Note
1	921500200003	Spring cord (Australian)	1	3*0.75
	921500200004	Spring cord (British)	1	3*0.75
	921500200005	Spring cord (European)	1	3*0.75
	921500200002	Spring cord (American)	1	3*0.75
	921500200008	Spring cord (Asian)	1	3*0.75
2	910200500037	Screw	4	
3	910400500004	Washer	6	
4	910400100004	Washer	6	
5	921000100030	Charger 12V5A	1	CDJ008-02-012TA-NL
6	910401800001	Washer 6	1	6
7	910400100005	Washer	1	6
8	910400500005	Washer	1	6
9	910200200032	Screw	1	M6x10
10	921300300003	Connector holder(4 cores)	1	
11	910400100004	Washer	4	5
12	910200500037	Screw	4	M5x10
13	910400500004	Washer	4	5
14	921300300002	Connector holder(2 cores)	1	
15	921200100005	protection module	1	BD-V-12
16	910200500034	Screw	2	M4x8
17	920100400002	Fuse seat	1	
18	910400500006	Washer	4	8
19	910300100006	Nut	4	M8
20	910200500024	Screw	2	M4x16
21	910400100006	Washer	4	8
22	920600100007	Battery	1	12V/42Ah
23	920100100007	Fuse	1	150A
24	920800100004	Pump contactor	1	AR92-1Z DC12V
25	910300100004	Nut M5	2	M5
26	403533010000	Main wire	1	

Fig. 12 Electrical assembly

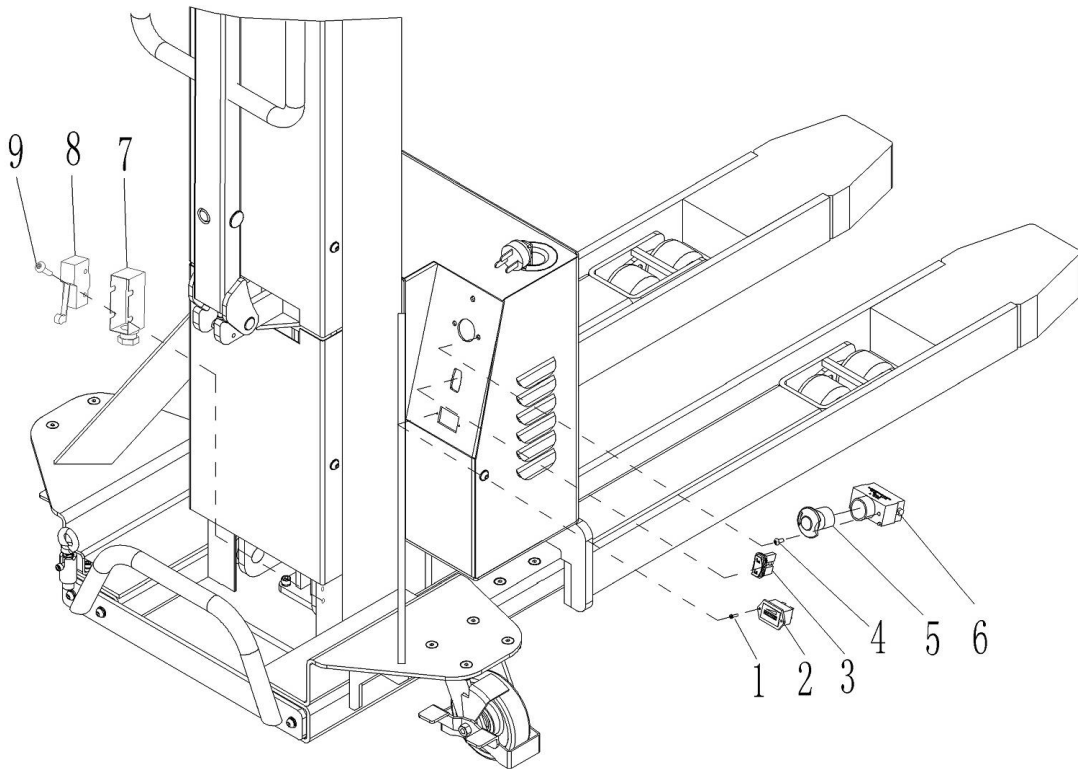


Fig. 12 Electrical Assembly

No.	Parts No.	Description	Qty.	Note
1	910200500010	Screw	2	M3x8
2	921100100005	Indicator	1	CURTIS 906
3	920200800004	Rocker switch	1	3203-00092-OV
4	910200200022	Screw	2	M5x12
5	920200100003	Emergency button key	1	S100/80
6		Emergency button	1	S100/80
7	920200300008	Micro switch protective cover	1	
8	920200300003	Micro switch	1	RZ-15GW2S-B3
9	910200200017	Screw	2	M4x25

Fig. 13 Electrical drawing

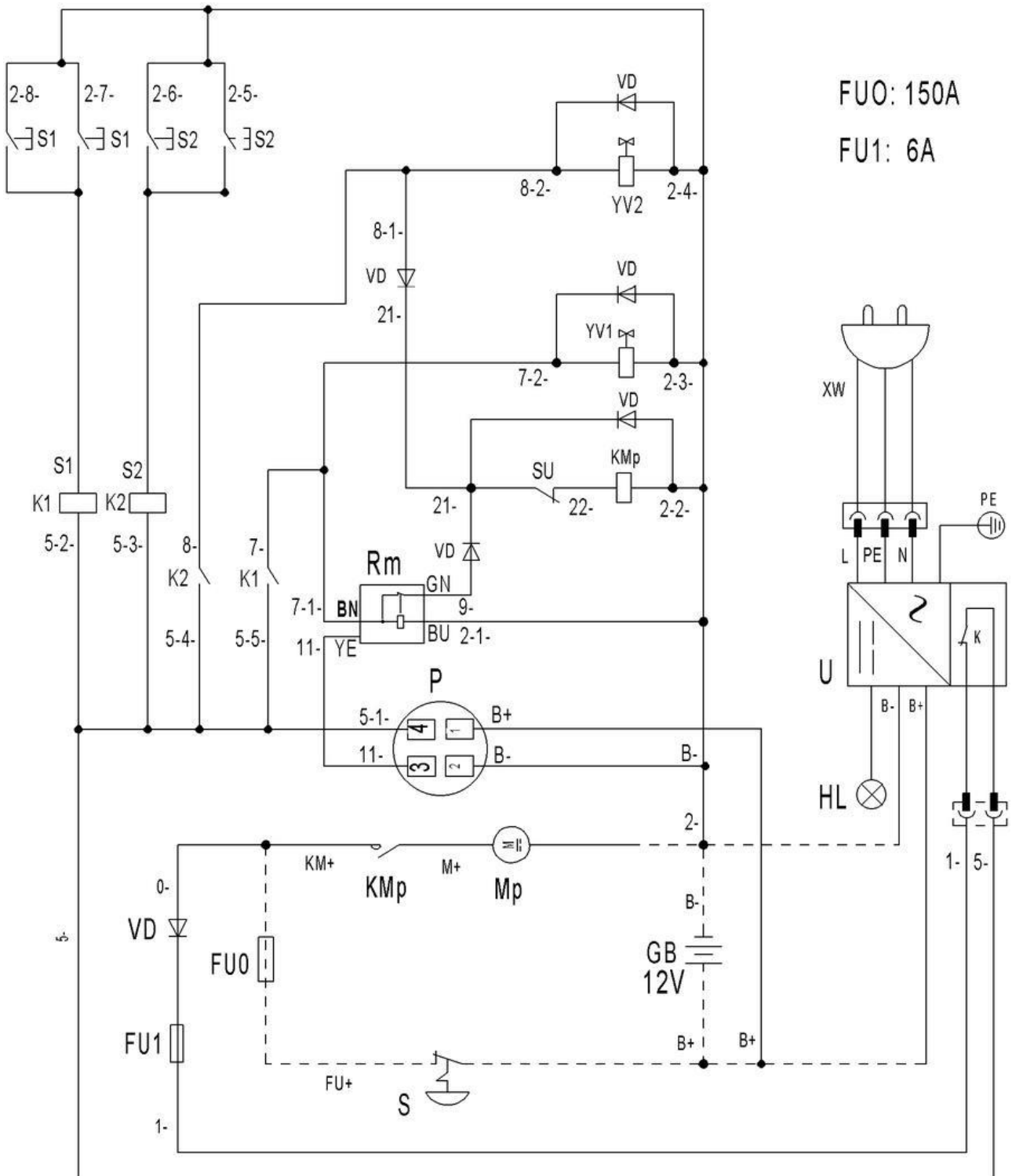


Fig. 14 Main cable diagram

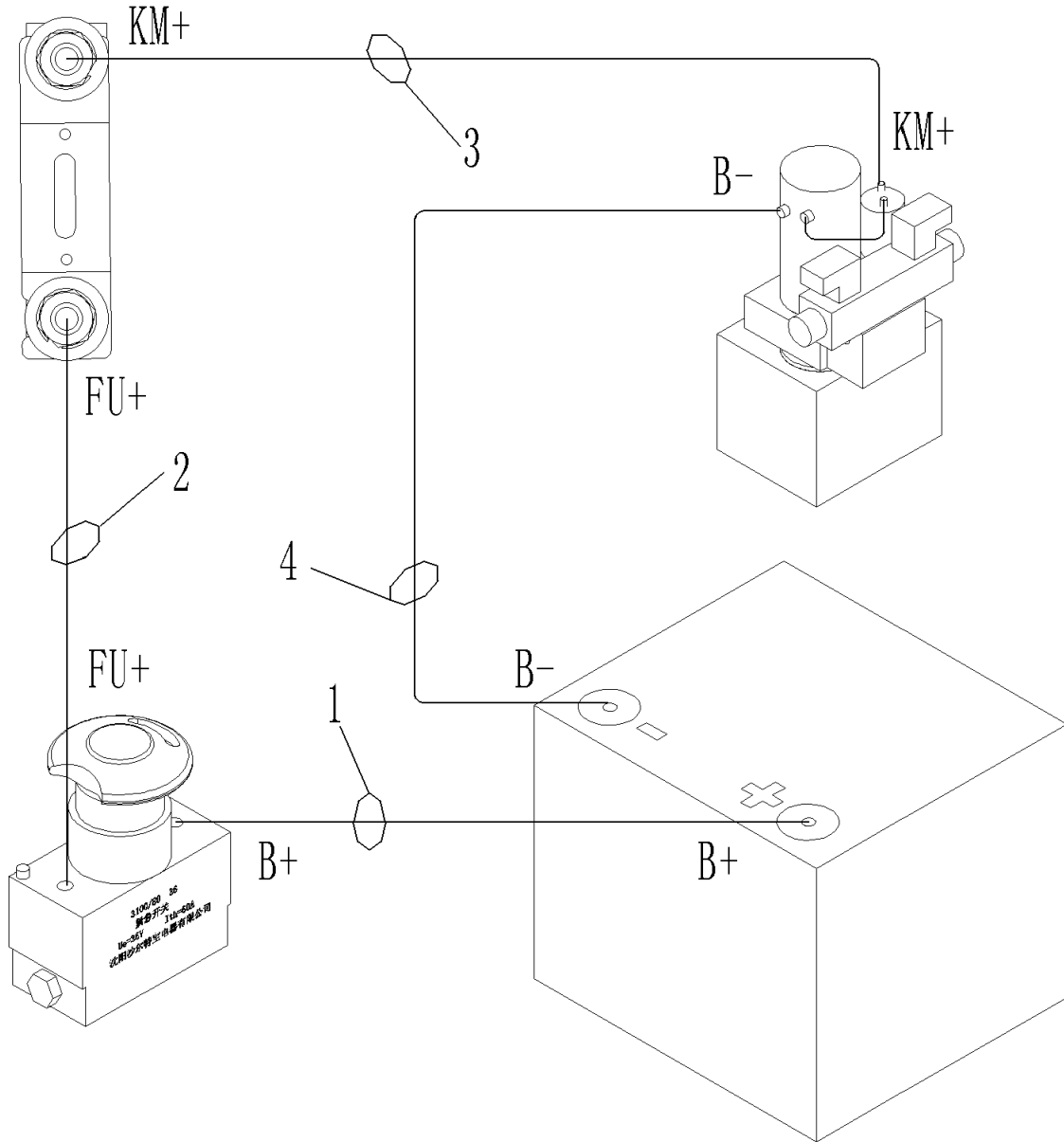


Fig. 14 Main Cable Diagram

No.	Parts No.	Description	Qty.	Note	备注
1	403533010004		1	1	
2	403533010006		1	1	
3	403533010003		1	1	
4	403533010005		1	1	

Easy worn parts list

No.	Art No.	Description	Qty.	Fig./Position	Note
1	910700200018	Bearing 6203	8	Fig.3/3	Load wheel assembly
2	940300202007	Wheel	8	Fig.3/4	
3	403598510001	Wheel assembly	4	Fig.3/6	
4	940300202010	Transition wheel	2	Fig.4/5	Truck body assembly
5	910700200018	Bearing 6203	4	Fig.4/4	
6	403598510000	Wheel assembly	2	Fig.4/14	
7	910800400007	Dust ring25X33X4.5	1	Fig.10/4	Cylinder assembly
8	534498520001	Shaft seal 25X33X5	1	Fig.10/5	
9	403598520023	O-ring39.4X3.1	1	Fig.10/6	
10	403598520016	Copper bushing 25X28X10	1	Fig.10/7	
11	910800100039	O-ring 18x2.4	1	Fig.10/9	
12	403598520020	Ring 40X30X16.4X6.35	1	Fig.10/12	
13	403598510003	Cylinder seal kits	1	Fig.10/13	
14	403598520012	Motor carbon brush	1	Fig.9/14	Pump
15	940500200005	Bushing 20x22x12	1	Fig.5/5	Handle assembly
16	910600400009	Dowel pin 3x14	2	Fig.5/6	
17	403538020027	Roller	4	Fig.7/1	Fork assembly
	403538020032				
18	940500100028	Bushing	4	Fig.7/2	
19	533213520016	Adjusting block	4	Fig.7/5	
20	940500100017	Bushing	1	Fig.7/21	
21	401744020000	Guide castor	2	Fig.6/6	Mast assembly
22	403544010009	Plastic drag chain	1	Fig.6/14	
	403544010010	Plastic drag chain	1	Fig.6/14	
23	920100100007	Fuse 150A	1	Fig.11/23	Electric assembly



MOBILE INDUSTRIES, INC.
3750B Laird Rd - Unit 2 & 3
Mississauga ON, L5L 0R6
Canada

Toll Free: 1 800 527 4612 • Local 905 279 5370
Email: info@mobilept.com

MOBILEPT.COM