



OPERATING INSTRUCTIONS & PARTS LIST

ELT330N LIFT TABLE

VERSION	N/A
MODEL	ECO ELT330N LIFT TABLE
APPLICABLE PRODUCTS	ECO ELT330N

NOTE: Owner and operator MUST read and understand the operating instructions before using the unit.

Thank you for using this lift table. Your lift table is made of high quality steel and is designed for the horizontal lifting and transport of loads on a level, fixed base. For your safety and correct operation, please carefully read this instruction before using it and keep it on file for future reference.

NOTE: All of the information reported herein is based on data available at the moment of printing. We reserve the right to modify our own products at any moment without notice and incurring in any sanction. So, it is suggested to always verify possible updates.

1. WARNINGS

- 1、 DO NOT put foot or hand in scissors mechanism.
- 2、 DO NOT allow other person to stand in front or behind lift table when it is moving.
- 3、 DO NOT move lift table when table is in raised position. Load could fall down.
- 4、 DO NOT enter under table.
- 5、 DO NOT overload lift table.
- 6、 DO NOT put foot in front of rolling wheels, Injury could fall down.
- 7、 WATCH difference of floor level when moving lift table. Load could fall down.
- 8、 DO NOT use lift table on slope or inclined surface, lift table may become uncontrollable and create danger.
- 9、 DO NOT lift people. People could fall down and suffer severe injury.

2. CAUTION

- 1、 Read this operation manual carefully and understand completely operating lift table. Improper operation could create danger.
- 2、 This lift table is a movable lifter designed to lift or lower rated load on table. DO NOT use lift table for other purpose than its intended use.
- 3、 DO NOT allow person to operate lift table that dose not understand its operation.
- 4、 DO NOT lower table too fast. Load could fall down and create danger.
- 5、 KEEP watching the condition of load. Stop operating lift table if load becomes unstable.
- 6、 Braking lift table when sliding load on or off table.
- 7、 DO NOT side or end load. Load must be distributed on at least 80% of table area.
- 8、 DO NOT use lift table with unstable, unbalanced loosely load.
- 9、 Practice maintenance work according to service instructions.
- 10、 DO NOT modify lift table without manufacturers written consent.
- 11、 REMOVE load from table and use safety stopper to prevent table from lowering when servicing lift table.
- 12、 This lift table is not designed to be water resistant. Use lift table under dry condition.

3. DAILY INSPECTION

Daily inspection is effective to find the malfunction or fault on lift table. Check lift table on the following points before operation.

- (1) Check for scratch, bending or cracking on the lift table.

- (2) Check if there is any oil leakage from the cylinder.
- (3) Check the vertical creep of the table.
- (4) Check the smooth movement of the wheels.
- (5) Check the function of brake.
- (6) Check if all the bolts and nuts are tightened firmly.

CAUTION: DO NOT use lift table if any malfunction or fault is found.

4. OPERATING LIFT TABLE

4-1. How to use the brake.

CAUTION: Brake lift when not moving it in order to prevent sudden movement.

The brake is equipped with the swivel caster on the right side.

- (1) Brake the wheel, press the brake pedal.
- (2) Release the brake, lift up the brake pedal.

4-2. Lifting the table

WARNING

1. DO NOT overload lift table. Stay within its rated capacity.
2. DO NOT side or end. Load must be distributed on at least 80% of table area.

Press the lifting pedal several times until the table reaches the desired position. The table does not elevate after reaching the highest position even if the lifting pedal is pressed. The table lowers slightly after reaching the highest position.

MAXIMUM CAPACITY OF TABLE
ELT330N
330Lbs

NOTE: The hydraulic cylinder is designed to hold table. As is the nature of hydraulic systems, table lowers very slowly over an extended period of time. Please note the table does not stay at the same position indefinitely.

4-3. Lowering table

WARNING: DO NOT put foot or hand in scissors mechanism

- Pull the control handle to make the table lower.

5. Specifications

Model	Capacity (kg)	Table (mm)	Table Height (mm)	Wheel (mm)	Weight (Kg)
ELT330N	150 / 330lbs	700X450 / 27.5x17.7"	220-720 / 8.6-28.3"	□100 / 3.9"	46 / 101.2lbs

6. Service Instructions

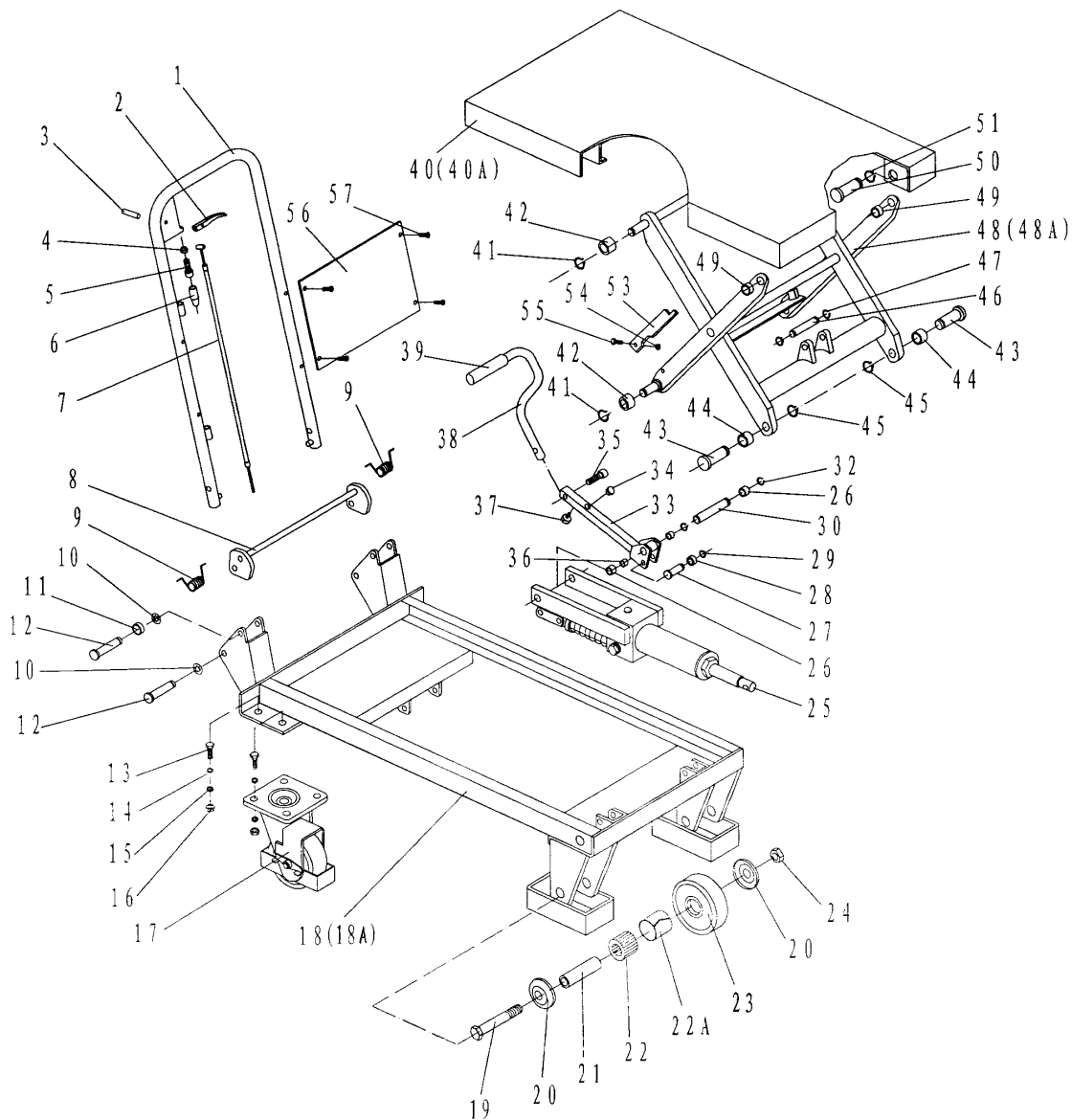
- 6-1. Lubricate each point described below every month:
- 6-2. Change hydraulic oil every 12 months.

Lubricating Points

- (1) Fitting of cylinder---Oil
- (2) Roller friction surface---Grease
- (3) Link pin ---Oil

- (4) Pedal fitting point---Oil
- (5) Grease nipple---Grease

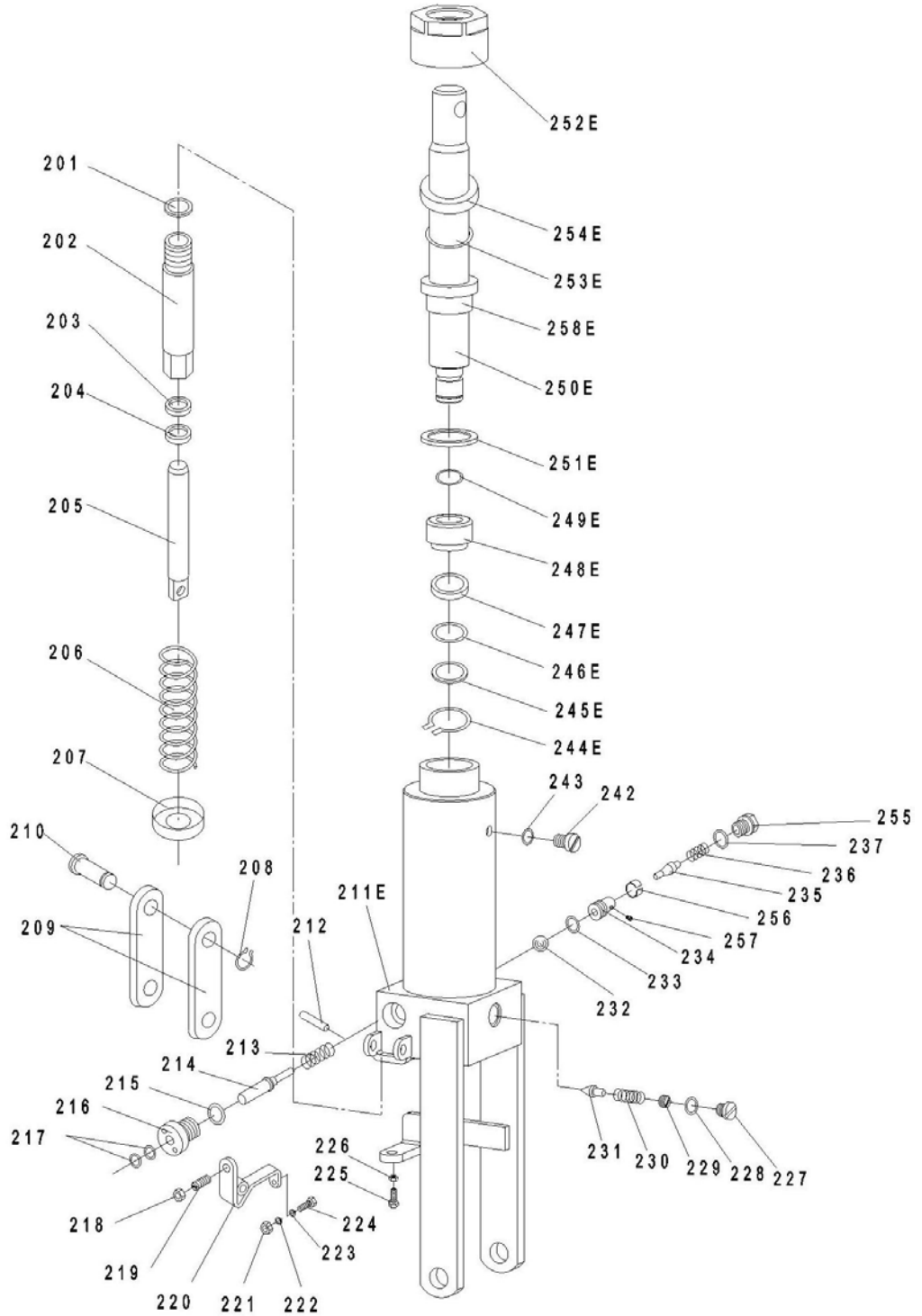
7. Part List of Table



No	Mobile No.	Description	Quantity
1	ELT330N-1	Handle Grip	1
2	ELT330N-2	Control Handle	1
3	ELT330N-3	Elastic Pin	1
4	ELT330N-4	Nut	1
5	ELT330N-5	Bolt With Hole	1
6	ELT330N-6	Jacket	1
7	ELT330N-7	Pull Line	1
8	ELT330N-8	Long Shaft	1
9	ELT330N-9	Spring	2
10	ELT330N-10	Retaining Ring	4
11	ELT330N-11	Washer	2
12	ELT330N-12	Pin	4
13	ELT330N-13	Bolt	8
14	ELT330N-14	Washer	8
15	ELT330N-15	Elastic Washer	8
16	ELT330N-16	Nut	8
17	ELT330N-17	Universal Wheel	2
18	ELT330N-18	Frame (EU)	1
18A	ELT330N-18A	Frame (USA)	1
19	ELT330N-19	Bolt	2
20	ELT330N-20	Dust Cover	4
21	ELT330N-21	Axle	2
22	ELT330N-22	Bearing	2
22A	ELT330N-22A	loop	2
23	ELT330N-23	Wheel	2
24	ELT330N-24	Nut	2
25	ELT330N-25	Pump Unit	1
26	ELT330N-26	Washer	2
27	ELT330N-27	Pin	1
28	ELT330N-28	Washer	1
29	ELT330N-29	Retaining	1
30	ELT330N-30	Pin	1

32	ELT330N-32	Retaining Ring	2
33	ELT330N-33	Connecting	1
No	Mobile No.	Description	Quantity
34	ELT330N-34	Cushion	1
35	ELT330N-35	Bolt	1
36	ELT330N-36	Bushing	2
37	ELT330N-37	Cushion	1
38	ELT330N-38	Pedal Bar	1
39	ELT330N-39	Protecting Cover	1
40	ELT330N-40	Table (EU)	1
40A	ELT330N-40A	Table (USA)	1
41	ELT330N-41	Retaining Ring	4
42	ELT330N-42	Roller	4
43	ELT330N-43	Pin	2
44	ELT330N-44	Bushing	2
45	ELT330N-45	Retaining Ring	2
46	ELT330N-46	Pin	1
47	ELT330N-47	Retaining Ring	2
48	ELT330N-48	Fork Arm (EU)	1
48A	ELT330N-48A	Fork Arm (USA)	1
49	ELT330N-49	Bushing	2
50	ELT330N-50	Pin	2
51	ELT330N-51	Retaining Ring	2
53	ELT330N-53	Support Plank	2
54	ELT330N-54	Nut	2
55	ELT330N-55	Screw	2
56	ELT330N-56	Protecting board	1
57	ELT330N-57	Bolt	4

7. Part List of Pump



No	Mobile No.	Description	Quantity
201	ELT330N-201	Seal Washer	1
202	ELT330N-202	Pump Cylinder	1
203	ELT330N-203	Dust Ring	1
204	ELT330N-204	Y-Seal	1
205	ELT330N-205	Pump Piston	1
206	ELT330N-206	Spring	1
207	ELT330N-207	Spring Cap	1
208	ELT330N-208	Retaining Ring	1
209	ELT330N-209	Joint Plate	2
210	ELT330N-210	Pin	1
212	ELT330N-212	Elastic Pin	1
213	ELT330N-213	Spring	1
214	ELT330N-214	Strike Pin	1
215	ELT330N-215	Seal Washer	1
216	ELT330N-216	Axle Sleeve	1
217	ELT330N-217	O-Ring	2
218	ELT330N-218	Nut	1
219	ELT330N-219	Screw	1
220	ELT330N-220	Lever Plate	1
221	ELT330N-221	Nut	1
222	ELT330N-222	Elastic Washer	1
223	ELT330N-223	Washer	1
224	ELT330N-224	Bolt With Hole	1
225	ELT330N-225	Bolt With Hole	1
226	ELT330N-226	Nut	1
227	ELT330N-227	Plug	1
228	ELT330N-228	O-Ring	1
229	ELT330N-229	Adjusting Bolt	1
230	ELT330N-230	Spring	1
231	ELT330N-231	Spindle of Safety Valve	1
232	ELT330N-232	Steel Ball	1
233	ELT330N-233	O-Ring	1
234	ELT330N-234	Seat of Pumping Valve	1

No	Mobile No.	Description	Quantity
235	ELT330N-235	Spindle of Pumping Valve	1
236	ELT330N-236	Spring	1
237	ELT330N-237	Seal Washer	1
242	ELT330N-242	Bolt	1
243	ELT330N-243	Seal Washer	1
244E	ELT330N-244E	Retaining Ring	1
245E	ELT330N-245E	Washer	1
246E	ELT330N-246E	O-Ring	1
247E	ELT330N-247E	Cup Packing	1
248E	ELT330N-248E	Piston	1
249E	ELT330N-249E	O-Ring	1
250E	ELT330N-250E	Piston Rod	1
251E	ELT330N-251E	Seal Washer	1
252E	ELT330N-252E	Cylinder Cap	1
253E	ELT330N-253E	O-Ring	1
254E	ELT330N-254E	Dust Ring	1
255	ELT330N-255	Plug	1
256	ELT330N-256	Liquid Throttle Sheath	1
257	ELT330N-257	Bolt	1
258E	ELT330N-258E	Sleeve	1



MOBILE INDUSTRIES, INC.
3750B Laird Rd - Unit 2 & 3
Mississauga ON, L5L 0R6
Canada

Toll Free: 1 800 527 4612 • Local 905 279 5370
Email: info@mobilept.com

MOBILEPT.COM