



OPERATING INSTRUCTIONS & PARTS LIST

ECO LIFT TABLE

VERSION	N/A
MODEL	ECO ELT660N & ELT1100 LIFT TABLE
APPLICABLE PRODUCTS	ECO ELT660N / ECO ELT1100N

NOTE: Owner and operator MUST read and understand the operating instructions before using the unit.

Thank you for using this lift table. Your lift table is made of high quality steel and is designed for the horizontal lifting and transport of loads on a level, fixed base. For your safety and correct operation, please carefully read this instruction before using it and keep it on file for future reference.

NOTE: All of the information reported herein is based on data available at the moment of printing. We reserve the right to modify our own products at any moment without notice and incurring in any sanction. So, it is suggested to always verify possible updates.

1. WARNINGS

- 1、 DO NOT put foot or hand in scissors mechanism.
- 2、 DO NOT allow other person to stand in front or behind lift table when it is moving.
- 3、 DO NOT move lift table when table is in raised position. Load could fall down.
- 4、 DO NOT enter under table.
- 5、 DO NOT overload lift table.
- 6、 DO NOT put foot in front of rolling wheels, Injury could fall down.
- 7、 WATCH difference of floor level when moving lift table. Load could fall down.
- 8、 DO NOT use lift table on slope or inclined surface, lift table may become uncontrollable and create danger.
- 9、 DO NOT lift people. People could fall down and suffer severe injury.

2. CAUTION

- 1、 Read this operation manual carefully and understand completely operating lift table. Improper operation could create danger.
- 2、 This lift table is a movable lifter designed to lift or lower rated load on table. DO NOT use lift table for other purpose than its intended use.
- 3、 DO NOT allow person to operate lift table that dose not understand its operation.
- 4、 DO NOT lower table too fast. Load could fall down and create danger.
- 5、 KEEP watching the condition of load. Stop operating lift table if load becomes unstable.
- 6、 Braking lift table when sliding load on or off table.
- 7、 DO NOT side or end load. Load must be distributed on at least 80% of table area.
- 8、 DO NOT use lift table with unstable, unbalanced loosely load.
- 9、 Practice maintenance work according to service instructions.
- 10、 DO NOT modify lift table without manufacturer's written consent.
- 11、 REMOVE load from table and use safety stopper to prevent table from lowering when servicing lift table.
- 12、 This lift table is not designed to be water resistant. Use lift table under dry condition.

3. DAILY INSPECTION

Daily inspection is effective to find the malfunction or fault on lift table. Check lift table on the following points before operation.

- (1) Check for scratch, bending or cracking on the lift table.

- (2) Check if there is any oil leakage from the cylinder.
- (3) Check the vertical creep of the table.
- (4) Check the smooth movement of the wheels.
- (5) Check the function of brake.
- (6) Check if all the bolts and nuts are tightened firmly.

CAUTION: DO NOT use lift table if any malfunction or fault is found.

4. OPERATING LIFT TABLE

4-1. How to use the brake.

CAUTION: Brake lift when not moving it in order to prevent sudden movement.

The brake is equipped with the swivel caster on the right side.

- (1) Brake the wheel, press the brake pedal.
- (2) Release the brake, lift up the brake pedal.

4-2. Lifting the table

WARNING

1. DO NOT overload lift table. Stay within its rated capacity.
2. DO NOT side or end. Load must be distributed on at least 80% of table area.

Press the lifting pedal several times until the table reaches the desired position. The table does not elevate after reaching the highest position even if the lifting pedal is pressed. The table lowers slightly after reaching the highest position.

MAXIMUM CAPACITY OF TABLE	
ELT660N	ELT1100N
300Kg / 660lbs	500Kg / 1100lbs

NOTE: The hydraulic cylinder is designed to hold table. As is the nature of hydraulic system, table lowers very slowly over an extended period of time. Please note the table does not stay at the same position indefinitely.

4-3. Lowering table

WARNING: DO NOT put foot or hand in scissors mechanism

- Pull the control handle to make the table lower.

5. Specifications

Model	Capacity (kg)	Table (mm)	Table Height (mm)	Wheel (mm)	Weight (Kg)
ELT660N	300 / 660lbs	815X500 / 32x20"	285-880 / 11.2x34.6"	□125 / 4.9"	77 / 170lbs
ELT1100N	500 / 1100lbs				81 / 178lbs

6. Service Instructions

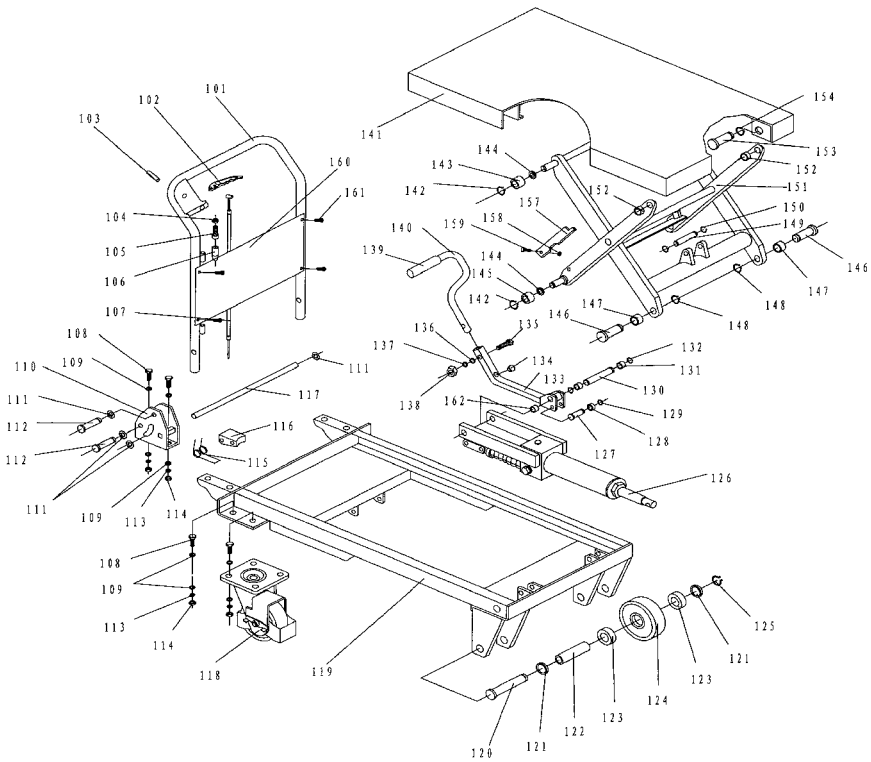
- 6-1. Lubricate each point described below every month:
- 6-2. Change hydraulic oil every 12 months.

Lubricating Points

- (1) Fitting of cylinder---Oil
- (2) Roller friction surface---Grease
- (3) Link pin ---Oil

- (4) Pedal fitting point---Oil
- (5) Grease nipple---Grease

7. Parts List of Table

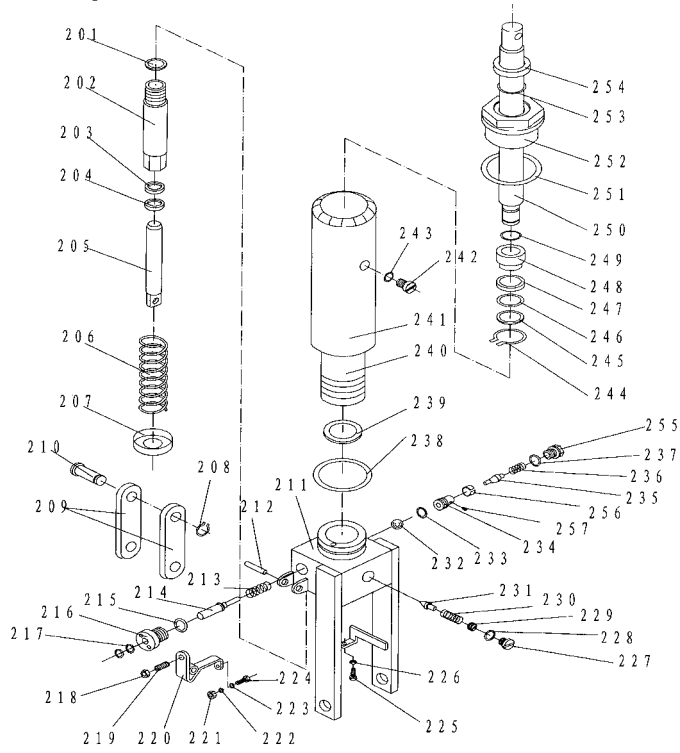


No	Mobile No.	Description	Qty.
101	ELT660/110N-101	Handle Grip	1
102	ELT660/110N-102	Control Handle	1
103	ELT660/110N-103	Elastic Pin	1
104	ELT660/110N-104	Nut	1
105	ELT660/110N-105	Bolt with Hole	1
106	ELT660/110N-106	Jacket	1
107	ELT660/110N-107	Pull Rod	1
108	ELT660/110N-108	Bolt	12
109	ELT660/110N-109	Washer	12
110	ELT660/110N-110	Seat of Grip	2
111	ELT660/110N-111	Retaining Ring	6
112	ELT660/110N-112	Pin	4
113	ELT660/110N-113	Elastic Washer	12
114	ELT660/110N-114	Nut	12
115	ELT660/110N-115	Spring	2
116	ELT660/110N-116	Cushion	2
117	ELT660/110N-117	Long Shaft	1
118	ELT660/110N-118	Universal Wheel	2
119	ELT660/110N-119	Frame	1
120	ELT660/110N-120	Pin	2
121	ELT660/110N-121	Washer	4
122	ELT660/110N-122	Axle	2
123	ELT660/110N-123	Bearing	4
124	ELT660/110N-124	Wheel	2
125	ELT660/110N-125	Retaining Ring	2

126	ELT660/110N-126	Pump Unit	1
127	ELT660/110N-127	Pin	1
128	ELT660/110N-128	Washer	1
129	ELT660/110N-129	Retaining Ring	1
130	ELT660/110N-130	Pin	1

No	Mobile No.	Description	Qty.
131	ELT660/110N-131	Washer	2
132	ELT660/110N-132	Retaining Ring	2
133	ELT660/110N-133	Connecting Rod	1
134	ELT660/110N-134	Cushion	1
135	ELT660/110N-135	Bolt	1
136	ELT660/110N-136	Washer	1
137	ELT660/110N-137	Elastic Washer	1
138	ELT660/110N-138	Nut	1
139	ELT660/110N-139	Protecting Cover	1
140	ELT660/110N-140	Pedal Bar	1
141	ELT660/110N-141	Table	1
142	ELT660/110N-142	Retaining Ring	4
143	ELT660/110N-143	Roller	2
144	ELT660/110N-144	Washer	4
145	ELT660/110N-145	Roller	2
146	ELT660/110N-146	Pin	2
147	ELT660/110N-147	Bushing	2
148	ELT660/110N-148	Retaining Ring	2
149	ELT660/110N-149	Pin	1
150	ELT660/110N-150	Retaining Ring	2
151	ELT660/110N-151	Fork Arm	1
152	ELT660/110N-152	Bushing	2
153	ELT660/110N-153	Pin	2
154	ELT660/110N-154	Retaining Ring	2
157	ELT660/110N-157	Support Plank	2
158	ELT660/110N-158	Nut	2
159	ELT660/110N-159	Screw	2
160	ELT660/110N-160	Protecting board	1
161	ELT660/110N-161	Bolt	4
162	ELT660/110N-162	Bushing	2

8. Part List of Pump

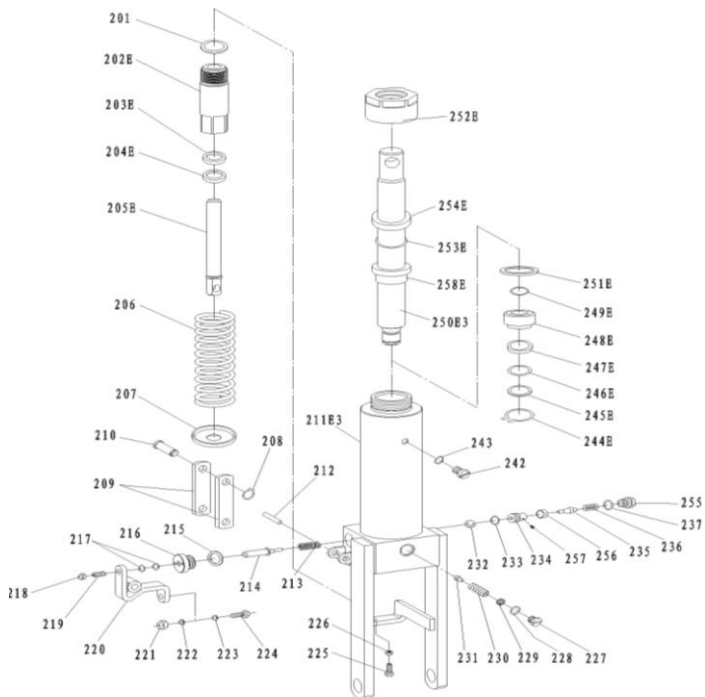


No	Mobile No.	Description	Quantity
201	ELT110N-201	Seal Washer	1
202	ELT110N-202	Pump Cylinder	1
203	ELT110N-203	Dust Ring	1
204	ELT110N-204	Y - Seal	1
205	ELT110N-205	Pump Piston	1
206	ELT110N-206	Spring	1
207	ELT110N-207	Spring Cap	1
208	ELT110N-208	Retaining Ring	1
209	ELT110N-209	Joint Plate	2
210	ELT110N-210	Pin	1
212	ELT110N-212	Elastic Pin	1
213	ELT110N-213	Spring	1
214	ELT110N-214	Strike Pin	1
215	ELT110N-215	Seal Washer	1
216	ELT110N-216	Axle Sleeve	1
217	ELT110N-217	O - Ring	2
218	ELT110N-218	Nut	1
219	ELT110N-219	Screw	1
220	ELT110N-220	Lever Plate	1
221	ELT110N-221	Nut	1
222	ELT110N-222	Elastic Washer	1
223	ELT110N-223	Washer	1
224	ELT110N-224	Bolt with Hole	1
225	ELT110N-225	Bolt with Hole	1
226	ELT110N-226	Nut	1
227	ELT110N-227	Plug	1
228	ELT110N-228	O - Ring	1
229	ELT110N-229	Adjusting Bolt	1

No	Mobile No.	Description	Quantity
230	ELT110N-230	Spring	1
231	ELT110N-231	Spindle of Safety Valve	1
232	ELT110N-232	Steel Ball	1
233	ELT110N-233	O-Ring	1
234	ELT110N-234	Seat of Pumping Valve	1
235	ELT110N-235	Spindle of Pumping Valve	1
236	ELT110N-236	Spring	1
237	ELT110N-237	Seal Washer	1
238	ELT110N-238	O - Ring	1
239	ELT110N-239	Seal Washer	1
240	ELT110N-240	Cylinder	1
241	ELT110N-241	Housing	1
242	ELT110N-242	Bolt	1
243	ELT110N-243	Seal Washer	1
244	ELT110N-244	Retaining Ring	1
245	ELT110N-245	Washer	1
246	ELT110N-246	O - Ring	1
247	ELT110N-247	Cup Packing	1
248	ELT110N-248	Piston	1
249	ELT110N-249	O - Ring	1
250	ELT110N-250	Piston Rod	1
251	ELT110N-251	Seal Washer	1
252	ELT110N-252	Cylinder Cap	1
253	ELT110N-253	O - Ring	1
254	ELT110N-254	Dust Ring	1

255	ELT110N-255	Plug	1
256	ELT110N-256	Liquid Throttle Sheath	1
257	ELT110N-257	Bolt	1

9. Part List of Pump



No	Mobile No.	Description	Quantity
201	ELT660N-201	Seal Washer	1

202E	ELT660N-202E	Pump Cylinder	1
203E	ELT660N-203E	Dust Ring	1
204E	ELT660N-204E	Y-Seal	1
205E	ELT660N-205E	Pump Piston	1
206	ELT660N-206	Spring	1
207	ELT660N-207	Spring Cap	1
208	ELT660N-208	Retaining Ring	1
209	ELT660N-209	Joint Plate	2
210	ELT660N-210	Pin	1
211E3	ELT660N-211E3	Pump Body	1
212	ELT660N-212	Elastic Pin	1
213	ELT660N-213	Spring	1
214	ELT660N-214	Strke Pin	1
215	ELT660N-215	Seal Washer	1
216	ELT660N-216	Axle Sleeve	1
217	ELT660N-217	O-Ring	2
218	ELT660N-218	Nut	1
219	ELT660N-219	Screw	1
220	ELT660N-220	Lever Plate	1
221	ELT660N-221	Nut	1
222	ELT660N-222	Elastic Washer	1
223	ELT660N-223	Washer	1
224	ELT660N-224	Bolt With Hole	1
225	ELT660N-225	Bolt With Hole	1
226	ELT660N-226	Nut	1
227	ELT660N-227	Plug	1

No	Mobile No.	Description	Quantity
228	ELT660N-228	O-Ring	1
229	ELT660N-229	Adjusting Bolt	1
230	ELT660N-230	Spring	1
231	ELT660N-231	Spindle of Safety Valve	1
232	ELT660N-232	Steel Ball	1
233	ELT660N-233	O-Ring	1
234	ELT660N-234	Seat of Pumping Valve	1
235	ELT660N-235	Spindle of Pumping Valve	1
236	ELT660N-236	Spring	1
237	ELT660N-237	Seal Washer	1
242	ELT660N-242	Bolt	1
243	ELT660N-243	Seal Washer	1
244E	ELT660N-244E	Retaining Ring	1
245E	ELT660N-245E	Washer	1
246E	ELT660N-246E	O-Ring	1
247E	ELT660N-247E	Cup Packing	1
248E	ELT660N-248E	Piston	1
249E	ELT660N-249E	O-Ring	1
250E3	ELT660N-250E3	Piston Rod	1
251E	ELT660N-251E	Seal Washer	1
252E	ELT660N-252E	Cylinder Cap	1
253E	ELT660N-253E	O-Ring	1
254E	ELT660N-254E	Dust Ring	1
255	ELT660N-255	Plug	1

256	ELT660N-256	Liquid Throttle Sheath	1
257	ELT660N-257	Bolt	1
258E	ELT660N-258E	Sleeve	1



MOBILE INDUSTRIES, INC.
3750B Laird Rd - Unit 2 & 3
Mississauga ON, L5L 0R6
Canada

Toll Free: 1 800 527 4612 • Local 905 279 5370
Email: info@mobilept.com

MOBILEPT.COM