

PARTS BREAKDOWN

LLS26NU STACKER

VERSION

JANUARY 2024

MODEL

LLS26NU MONO MAST 'LOW-LIFT' (SELF-PROPELLED) STRADDLE STACKER

APPLICABLE PRODUCTS

LLS26-31NU, LLS26-63NU, LLS26-79NU, LLS26NNU (LITHIUM BATTERY MODEL)

Please order parts from authorized dealers of this company. In order to avoid wrong delivery, all the orders for spare parts should specify the following items:

- Truck model, identification number and manufacture year.
- Orders for spare parts of mast, hydraulic transmission unit, steering axle, motor, etc. shall indicate the manufacture number of these parts.
- Codes for our company spare parts are shown in the table of parts manual. Please also pay attention to the description of supply status, order quantity, etc. (check the number listed in "Mark" column of the parts manual).

"Mark" Column:

The unmarked indicates the parts are in short supply cycle.

Number 1: supply as package. Indicating these that parts are small parts and seal parts, which are supplied in package unit and in short supply cycle.

Number 2: supply with constraints. Indicating that these spare parts are not in stock and will be prepared for production after receiving the order from customers, which are in long supply cycle.

Number 3: phasing-out supply. Indicating that these parts will be replaced by new parts due to technical improvements and the current stock will not be available when these parts run out. Please check the description of technical improvements notice.

Number 4: supply as assembly. Indicating that these parts are assembly parts defined by manufacture process, which cannot be supplied as a single part.

Number 5: check other tables.

This parts manual is the property of our company and can be shared under the confidential agreement only, our company has the right to claim for compensation of any unauthorized use. Copy without permission is not allowed. Figures in the manual are not limited by the original design. Our company reserves the right to improve the products for continuous technology progress.

Print Number:

Print Date:

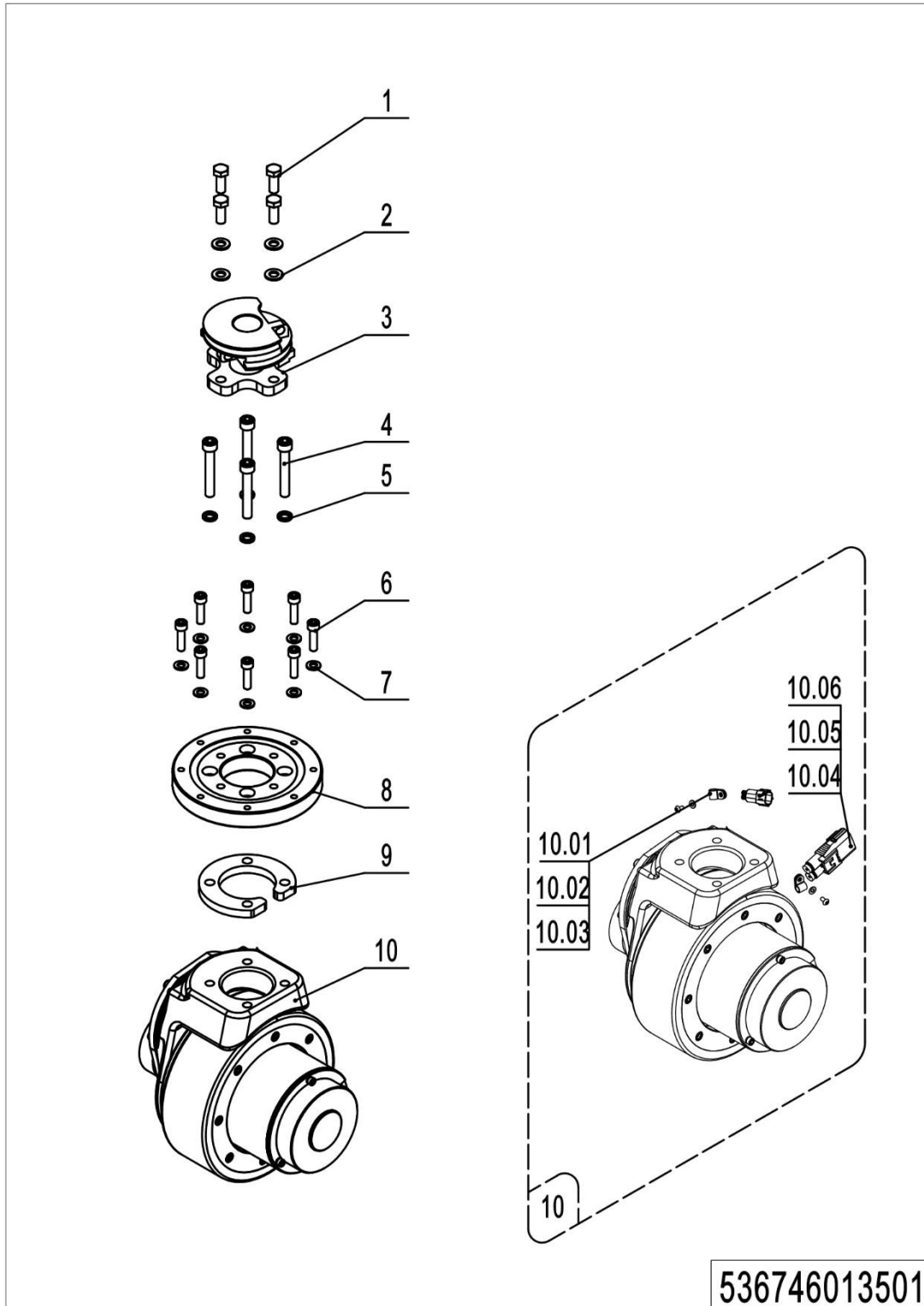
TABLE OF CONTENTS

Chapter 1: Drive system	6
01 Drive unit (536746013501).....	6
02 Drive assembly (536746013001).....	8
03 Motor assembly (532246013002).....	10
Chapter 2: Hydraulic system.....	12
01 Hydraulic unit (537746024001).....	12
02 Pump unit (536746023501)	14
Chapter 3: Truck structure	17
01 Truck frame (537746021501)	17
01 Truck frame (537746021501) continuation	21
01 Truck frame (537746021501) continuation	24
02 Forks (537746038001).....	26
03 Battery holder (536746012501).....	28
04 Battery holder (lithium battery) (536746012502).....	30
05 Control panel assembly (EN1175:2020) (532246010002)	33
Chapter 4: Steering system, braking system and wheels	35
01 Tiller (532246011001).....	37
02 Tiller head (DETONG) (EN1175:2020) (532246011012)	40
03 Tiller head (SHIJIA) (EN1175:2020) (532246011013).....	44
04 Load wheel (536746017001)	46
05 Side wheel (536746016501)	48
06 Manual steering (536746031201).....	50
Chapter 5: Electrical parts and wire harness.....	53
01 Wire harness (EN1175:2020) (532246033010)	53
02 Wire harness (lithium battery, EN1175:2020) (532246033011)	60
03 Electrical control unit (536746033003).....	62
04 Charger (lead-acid battery) (532246036501).....	65
05 Charger (lithium battery) (532246036502).....	68

Chapter 6: Special equipment	70
01 Load backrest (536746040501)	70
Chapter 7: Others	72
01 Labels and decals (EU) (537746047001).....	72
02 Labels and decals (USA) (537746047002).....	74
Appendix.....	76
01 Electrical circuit diagram (lead-acid battery, EN1175:2020) (532246045510)	76
02 Electrical circuit diagram (Lithium battery, EN1175:2020) (532246045511)	80
03 Hydraulic circuit diagram (532246045503).....	81
04 Easy worn parts list.....	82

Chapter 1: Drive system

01 Drive unit (536746013501)

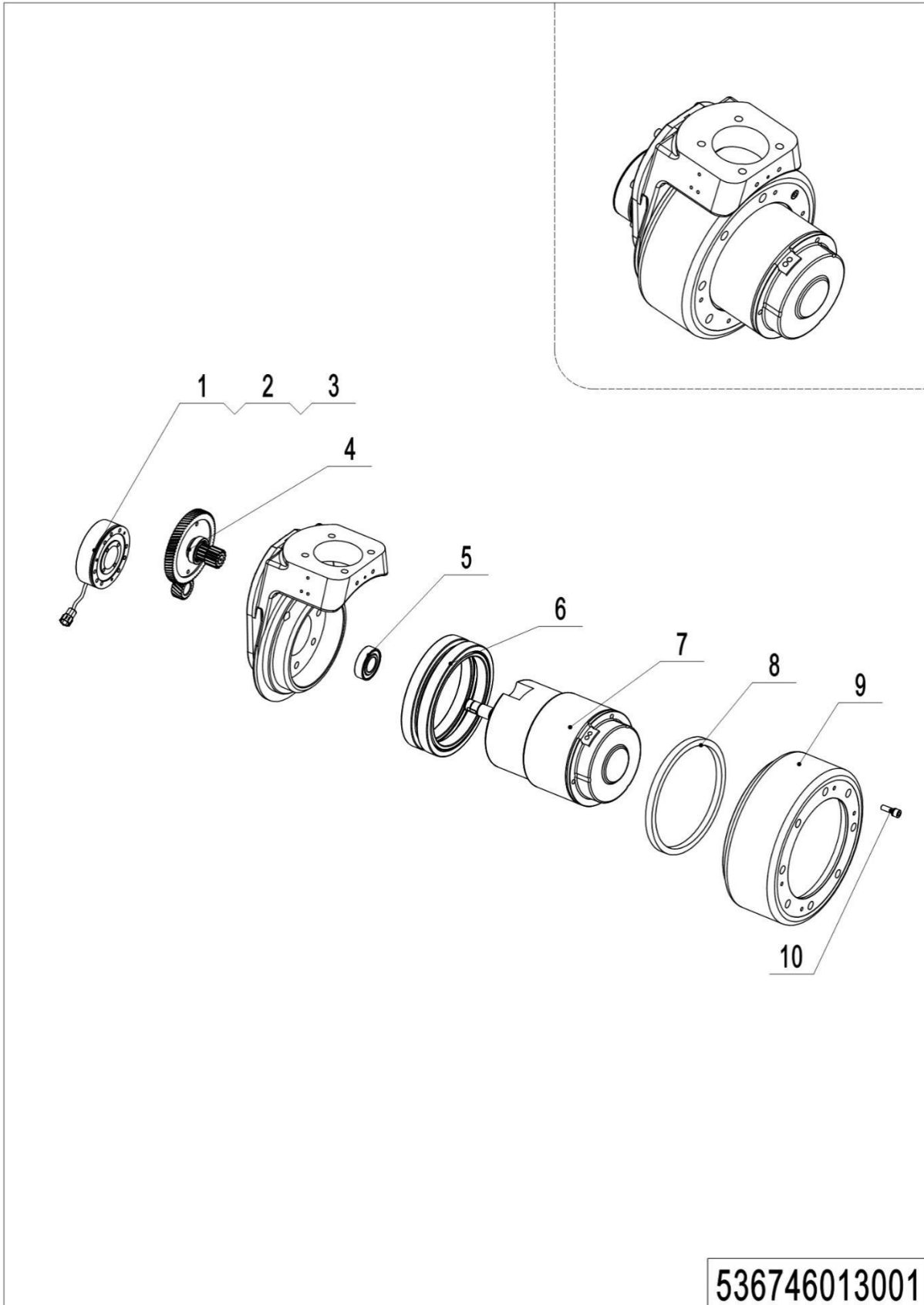


1=Supply as package; 2=Supply with limit; 3=Phasing out supply; 4=Supply as assembly; 5=Check other lists.

01 Drive unit (536746013501)

No.	Item Code	Mark	Item Description	Qty.	Substitute	Note
1	910100300036	1	Bolt	4		
2	910400100007	1	Flat Washer	4		
3	536731210001		Drive Axle Welding	1		
4	910200200082	1	Screw	4		
5	910400500007	1	Spring Washer	4		
6	910200200138	1	Screw	8		
7	910400100006	1	Flat Washer	8		
8	532213520001		Slewing Bearing	1		
9	536713520001		Linking plate	1		
10	508098510057		Drive Unit	1		check 536746013001
10.01	910200700001	1	Screw	2		
10.02	910400100003	1	Flat Washer	2		
10.03	921300200001		Cable Clamp	2		
10.04	920400200169	1	Connector	1		
10.05	920400200171	1	Connector	2		
10.06	920400200172	1	Connector	2		

1=Supply as package; 2=Supply with limit; 3=Phasing out supply; 4=Supply as assembly; 5=Check other lists.

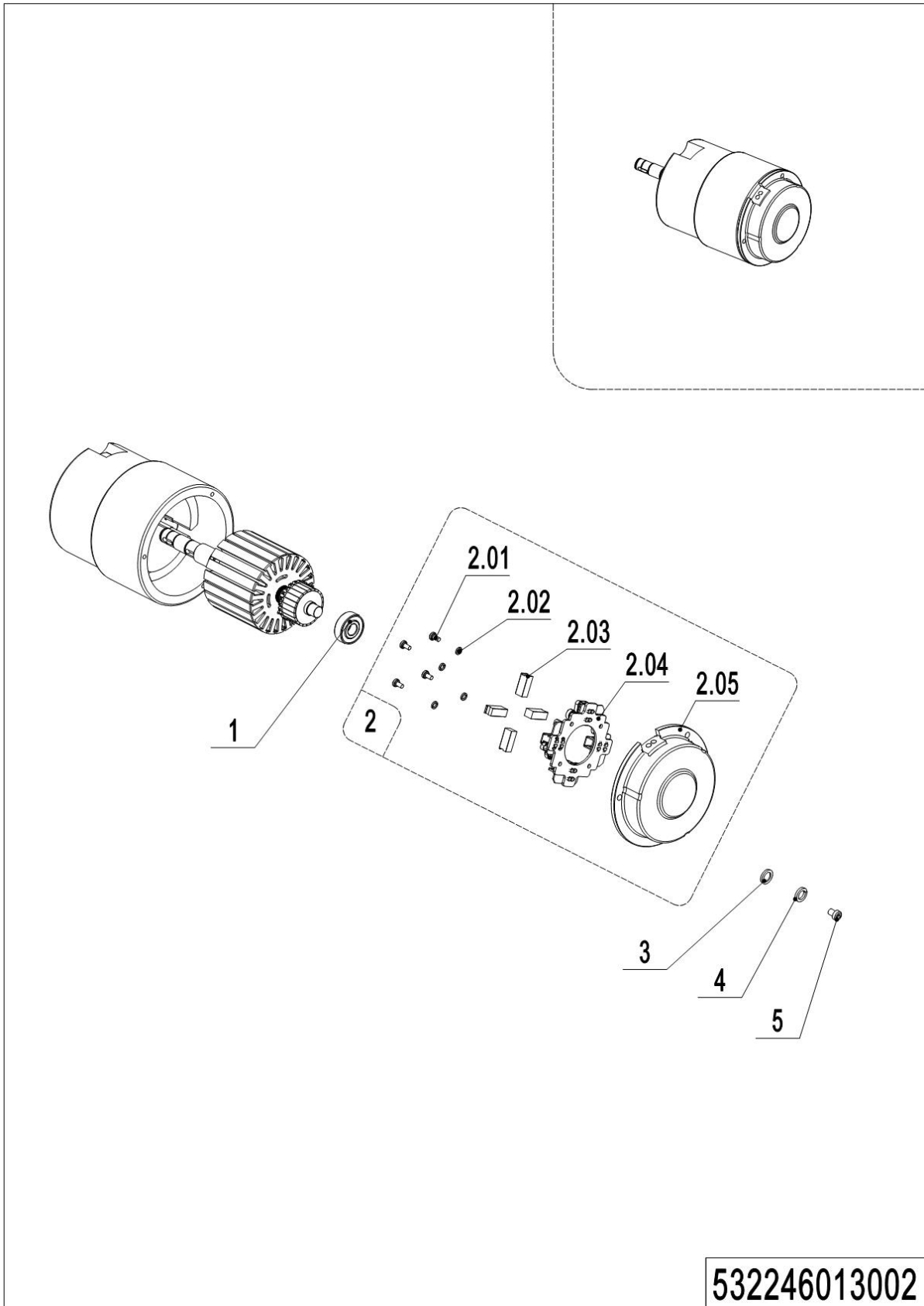
02 Drive assembly (536746013001)

1=Supply as package; 2=Supply with limit; 3=Phasing out supply; 4=Supply as assembly; 5=Check other lists.

02 Drive assembly (536746013001)

No.	Item Code	Mark	Item Description	Qty.	Substitute	Note
--	508098510057		Drive Unit	1		
1	508098520028	2	Brake (8NM)	1		
2	508098520040	2	Rubber Strip	1		
3	910200200019	1	Screw	3		
4	508098510015	2	Gear Components	1		
5	910700200004	2	Bearing	1		
6	508098520011	2	Gear Ring	1		
7	508098510016	5	Motor	1		Check 532246013002
8	508098520032	2	Seal	1		
9	508098520003		Wheel	1		
10	910200200167	1	Screw Kits	8		

1=Supply as package; 2=Supply with limit; 3=Phasing out supply; 4=Supply as assembly; 5=Check other lists.

03 Motor assembly (532246013002)

1=Supply as package; 2=Supply with limit; 3=Phasing out supply; 4=Supply as assembly; 5=Check other lists.

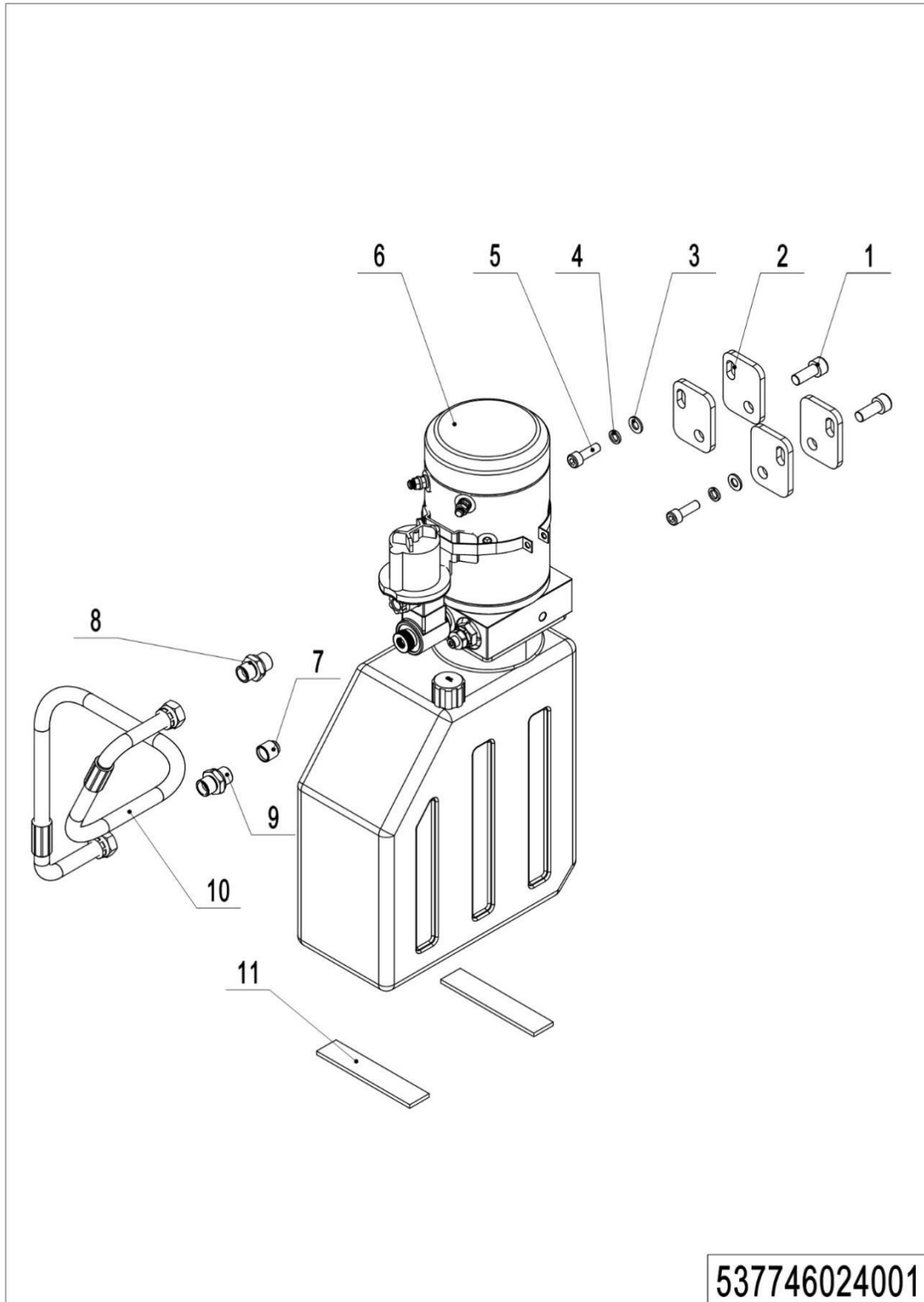
03 Motor assembly (532246013002)

No.	Item Code	Mark	Item Description	Qty.	Substitute	Note
--	508098510016	2	Motor	1		
1	910700200016	2	Bearing	1		
2	508098510074	2	End Cap	1		
2.01	910200500034	1	Screw	4		
2.02	910400500003	1	Spring Washer	4		
2.03	508098520000	2	Carbon Brush	4		
2.04	508098520001	2	Carbon Brush Holder	1		
2.05	508098520036	2	End Cap	1		
3	910400100002	1	Flat Washer	3		
4	910400500002	1	Spring Washer	3		
5	910200200023	1	Screw	3		

1=Supply as package; 2=Supply with limit; 3=Phasing out supply; 4=Supply as assembly; 5=Check other lists.

Chapter 2: Hydraulic system

01 Hydraulic unit (537746024001)



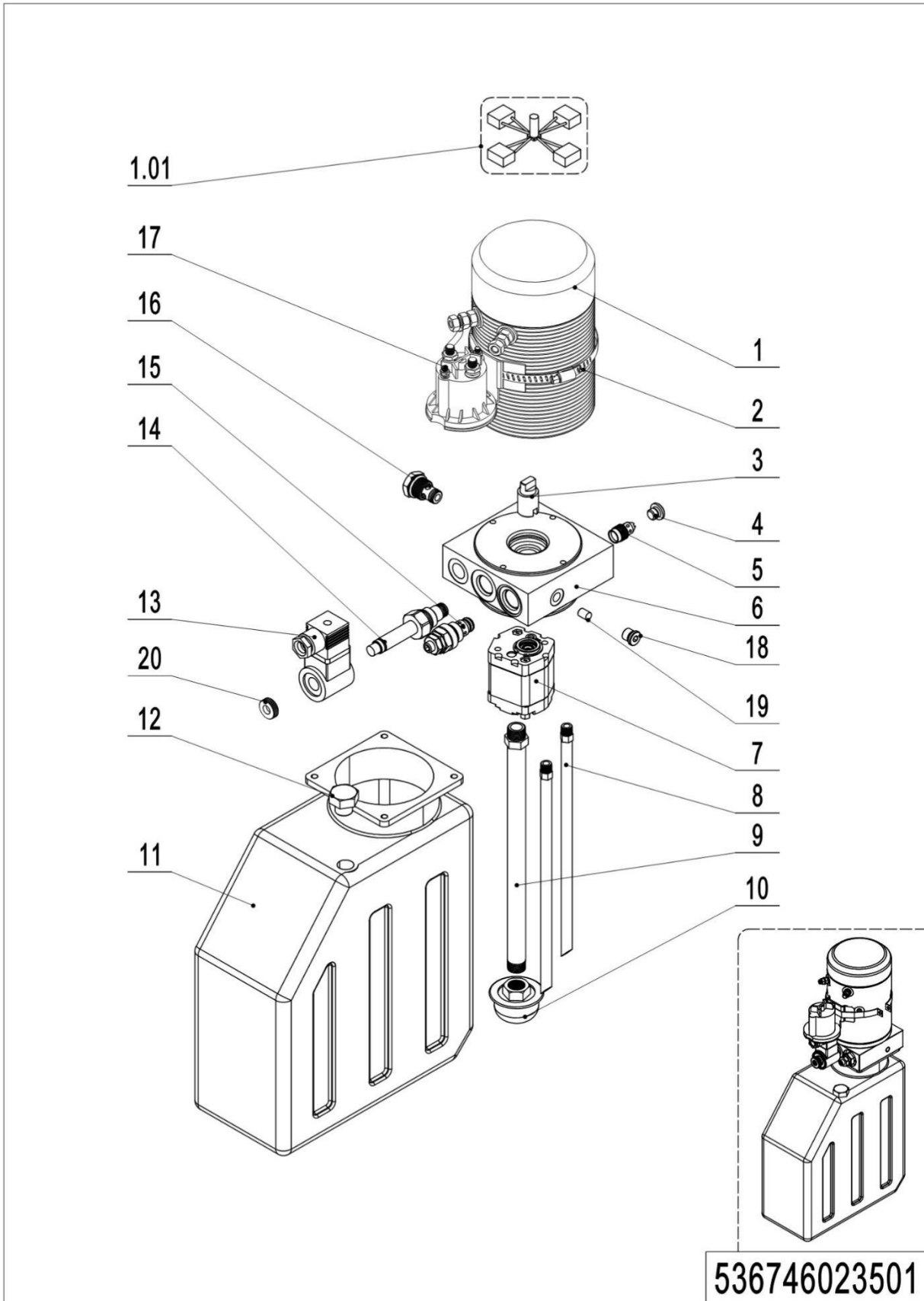
1=Supply as package; 2=Supply with limit; 3=Phasing out supply; 4=Supply as assembly; 5=Check other lists.

01 Hydraulic unit (536746024001)

No.	Item Code	Mark	Item Description	Qty.	Substitute	Note
1	910200200076	1	Screw	2		
2	532223520001		Plate	4		
3	910400100006	1	Flat Washer	2		
4	910400500006	1	Spring Washer	2		
5	910200200058	1	Screw	2		
6	-----	5	Pump Unit	1		Check 536746023501
7	950600300001		Safety Valve	1		
8	950400300007		Joint	1		
9	950400400003		Joint	1		
10	536724020001		Hose	1		
11	532223520010		Buffer gasket	2		

1=Supply as package; 2=Supply with limit; 3=Phasing out supply; 4=Supply as assembly; 5=Check other lists.

02 Pump unit (536746023501)



1=Supply as package; 2=Supply with limit; 3=Phasing out supply; 4=Supply as assembly; 5=Check other lists.

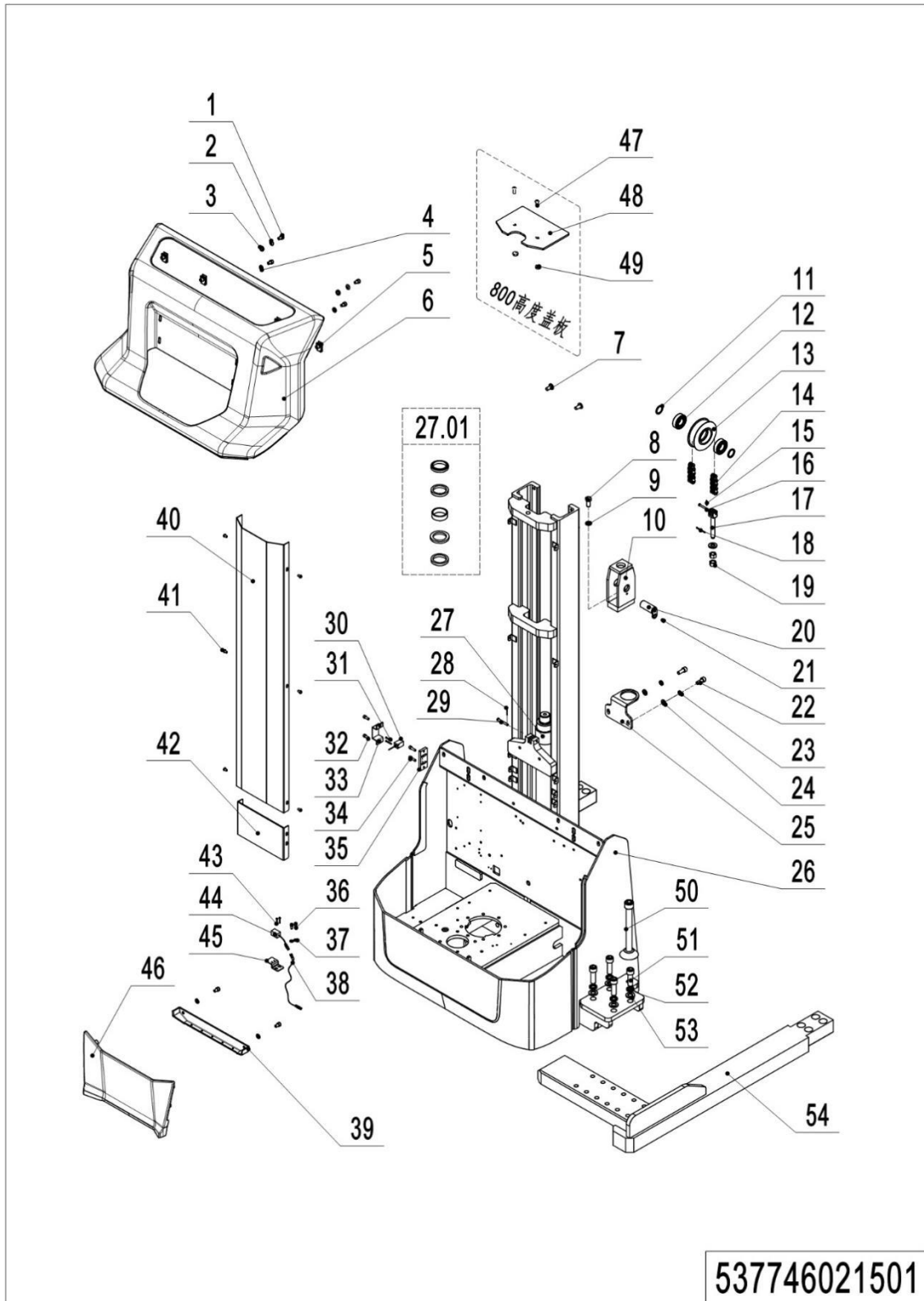
02 Pump unit (536746023501)

No.	Item Code	Mark	Item Description	Qty.	Substitute	Note
--	950900100108		Pump Unit	1		
1	532298510056		Motor	1		
1.01	532298510058		Carbon Brush	1		
2	532298510040		Hose Clamp	1		
3	532298520007		Coupling	1		
4	532298520003		End Cap	1		
5	532298510059		Valve	1		
6	53229810060		Valve Block	1		
7	532298510057		Gear pump	1		
8	532298520004		Pipe	2		
9	536798520002		Oil suction pipe	1		
10	532298510031		Filter	1		
11	536798520003		Oil tank	1		
12	532298510030		Vent plug	1		
13	532298510034		Coil	1		
14	532298510033		Magnetic Valve	1		
15	532298510044		Overflow valve	1		
16	532298510028		Check Valve	1		
17	532298510036		Switch	1		
18	532298510061		End Cap	1		
19	532298520010		Throttle screw	1		
20	532298520011		Nut	1		

1=Supply as package; 2=Supply with limit; 3=Phasing out supply; 4=Supply as assembly; 5=Check other lists.

Chapter 3: Truck structure

01 Truck frame (537746021501)



1=Supply as package; 2=Supply with limit; 3=Phasing out supply; 4=Supply as assembly; 5=Check other lists.

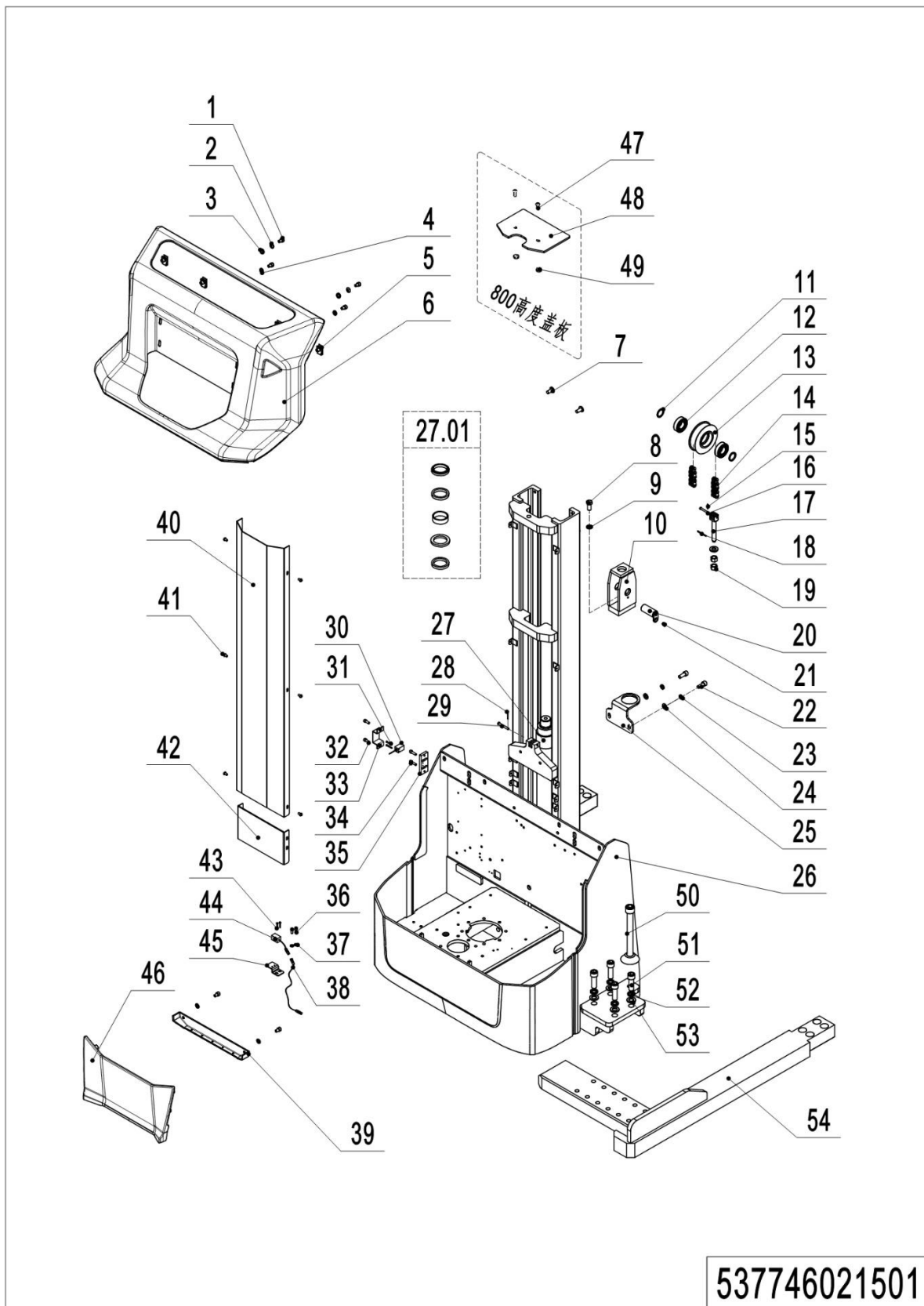
01 Truck frame (537746021501)

No.	Item Code	Mark	Item Description	Qty.	Substitute	Note
1	910200200053	1	Screw	6		
2	910400600004	1	Spherical Washer	2		
3	910400700004	1	Taper faced washer GB850-8	2		
4	910400100006	1	Flat Washer	4		
5	940400400003		Cage Nut	4		
6	532221510003		Cover	1		
7	941100100005		Screw	2		
8	910100300049	1	Screw	1		
9	910400500008	1	Spring Washer	1		
10	537521510002		Sprocket Holder	1		
11	940600500006		Washer	2		
12	910700200020		Bearing	2		
13	940200400002		Sprocket	1		
14	532344510004		Chain	1		2000
14	532344510009		Chain	1		1600
14	560824510008		Chain	1		800
15	910600600006		Cotter Pin	1		
16	941100800010		Pin	1		
17	206044520060		Chain Bolts	1		
18	910600600019		Split Pin	1		
19	910300200008		Screw	2		
20	533243510005		Trunnion	1		
21	910200400016		Screw	1		
22	910200200076		Screw	2		
23	910400500007		Spring Washer	2		
24	910400100007		Flat Washer	2		
25	537721520007		Mounting Plate	1		
26	537721510001		Chassis	1		800
26	537721510002		Chassis	1		1600

1=Supply as package; 2=Supply with limit; 3=Phasing out supply; 4=Supply as assembly; 5=Check other lists.

26	537721510003		Chassis	1		2000
----	--------------	--	---------	---	--	------

01 Truck frame (537746021501) continuation



537746021501

1=Supply as package; 2=Supply with limit; 3=Phasing out supply; 4=Supply as assembly; 5=Check other lists.

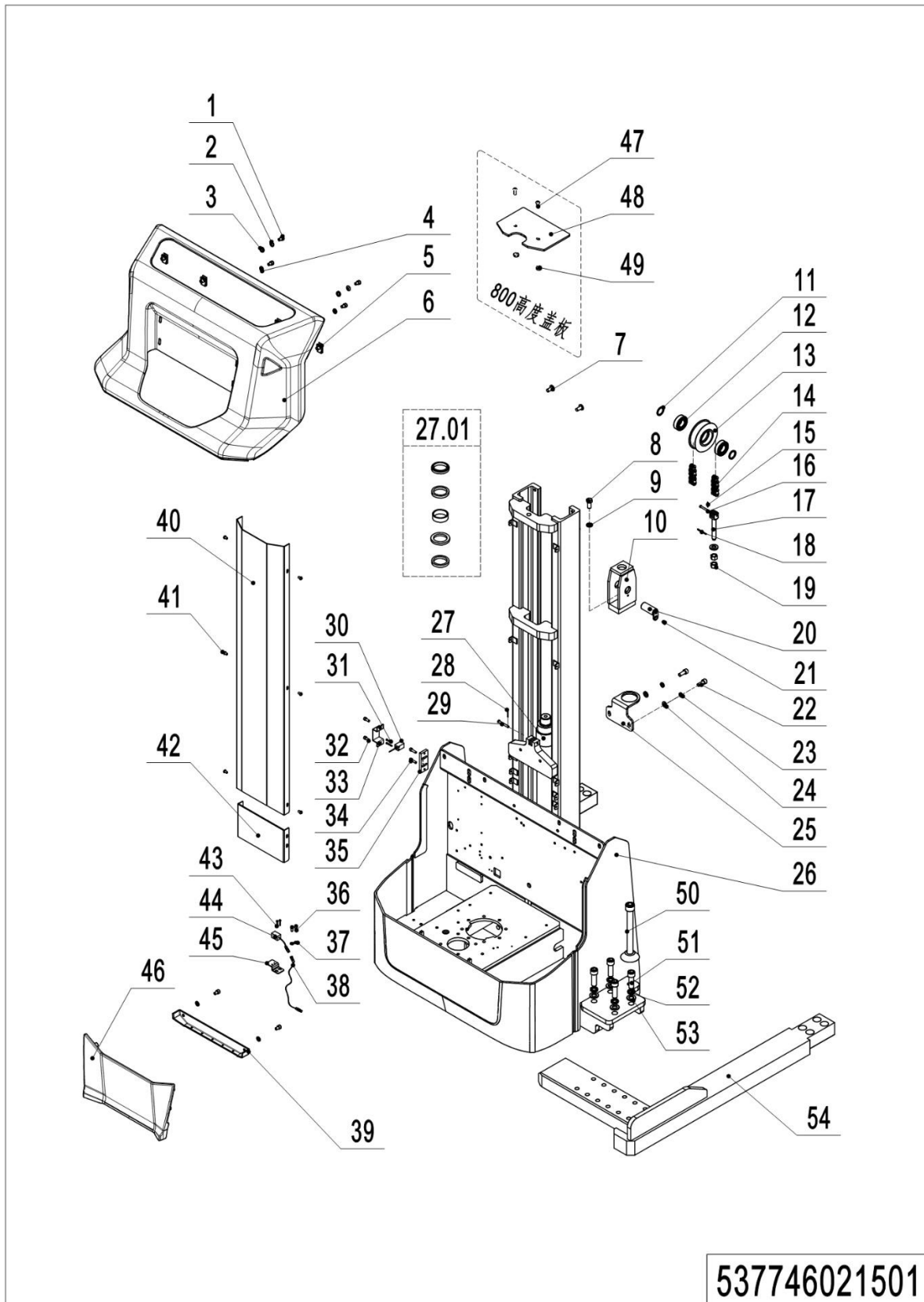
01 Truck frame (537746021501) continuation

No.	Item Code	Mark	Item Description	Qty.	Substitute	Note
27	5375430100		Cylinder	1		800
27	5322430100		Cylinder	1		1600
27	5322430100		Cylinder	1		2000
27.01	5322985100		Sealing fittings	1		
28	9106006000		Cotter Pin	1		
29	9411008000		Pin	1		
30	9202004000		Proximity Switch	1		
31	9102002000		Screw	2		
32	9102002000		Screw	2		
33	5324215200		Protective Cover	1		
34	9102002000		Screw	2		
35	5324215200		Mounting Plate	1		
36	9102002000	1	Screw	2		
37	9104001000	1	Flat Washer	2		
38	9215001000		Wire	1		
39	5322215200		Bottom Cover	1		
40	5375215200		Protective Cover 1(800)			
40	5375215200		Protective Cover 1(1600)			
40	5375215200		Protective Cover 1(2000)			
41	9102003000		Screw	6		800
41	9102003000		Screw	8		1600, 2000
42	5377215200		Protective Cover	1		
43	9102005000	1	Screw	2		
44	9202004000		Proximity Switch	1		
45	5322215200		Mounting Plate	1		
46	5322215200		Panel	1		
47	9102003000		Screw	2		800
48	5375215200		Cover Plate	1		800
49	9406005000		Washer	2		800

1=Supply as package; 2=Supply with limit; 3=Phasing out supply; 4=Supply as assembly; 5=Check other lists.

50	5367215100		Support Leg Kit	2		
----	------------	--	-----------------	---	--	--

01 Truck frame (537746021501) continuation

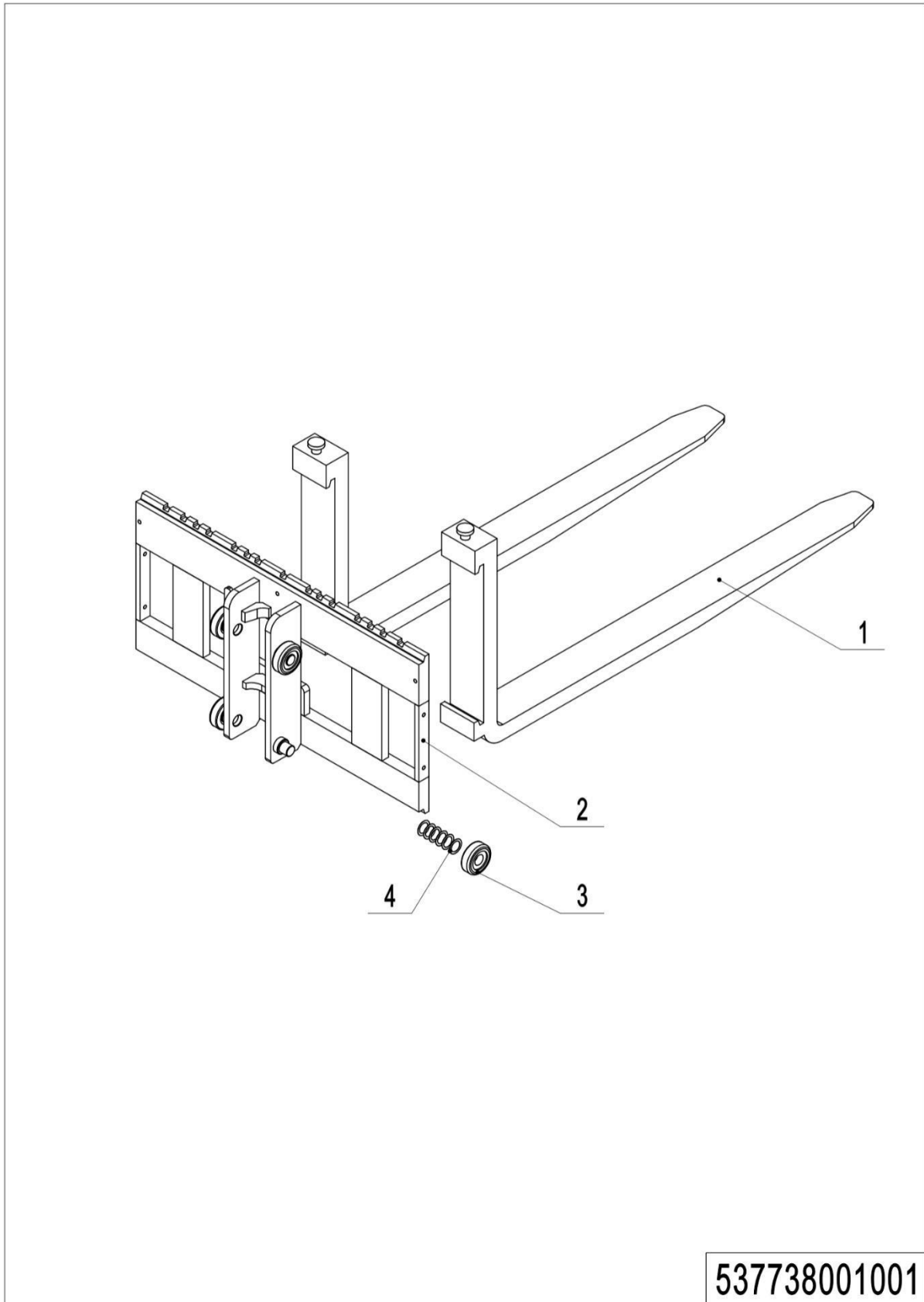


1=Supply as package; 2=Supply with limit; 3=Phasing out supply; 4=Supply as assembly; 5=Check other lists.

01 Truck frame (537746021501) continuation

No.	Item Code	Mark	Item Description	Qty.	Substitute	Note
51	9102002001		Screw	8		
52	9104005000		Spring Washer	8		
53	9104001000		Flat Washer	8		
54	5367215100	2	Leg	1		

1=Supply as package; 2=Supply with limit; 3=Phasing out supply; 4=Supply as assembly; 5=Check other lists.

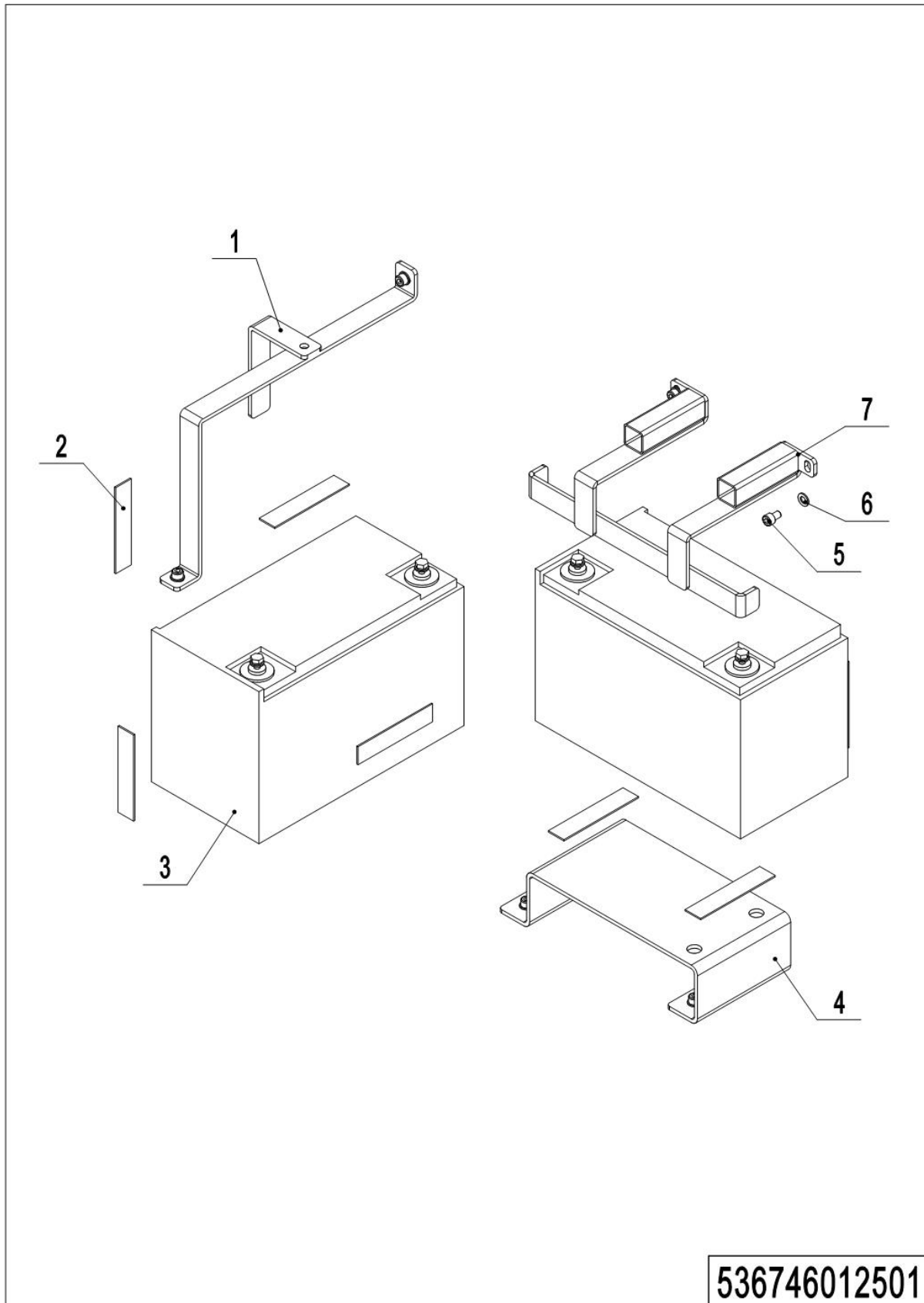
02 Forks (537746038001)

1=Supply as package; 2=Supply with limit; 3=Phasing out supply; 4=Supply as assembly; 5=Check other lists.

02 Forks (536746038001)

No.	Item Code	Mark	Item Description	Qty.	Substitute	Note
1	9401001000		Fork100x40x1150	2		
2	5377380100		Fork	1		
3	9402001000		Main Roller	4		
4	9406005000		Washer	24		

1=Supply as package; 2=Supply with limit; 3=Phasing out supply; 4=Supply as assembly; 5=Check other lists.

03 Battery holder (536746012501)**536746012501**

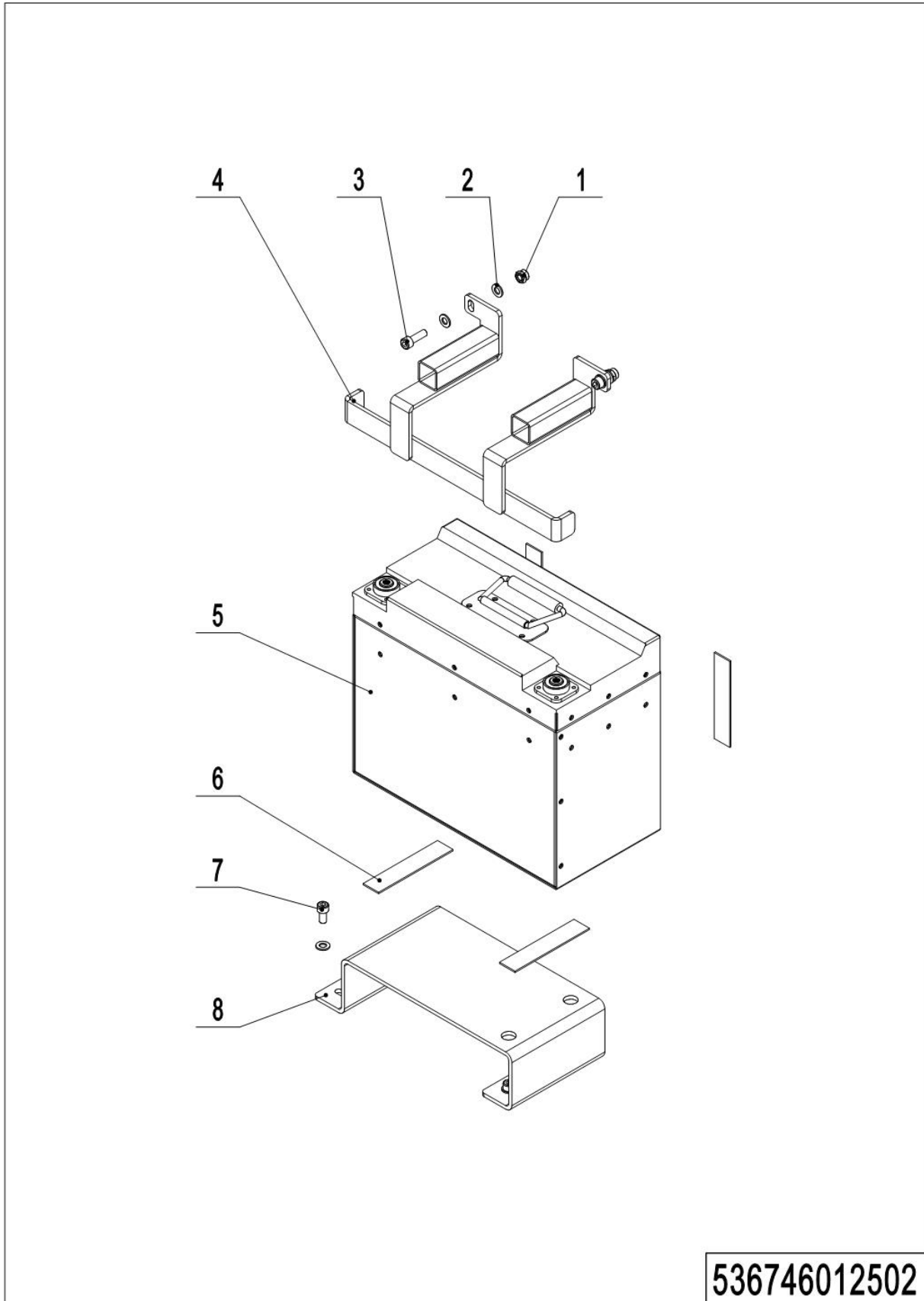
1=Supply as package; 2=Supply with limit; 3=Phasing out supply; 4=Supply as assembly; 5=Check other lists.

03 Battery holder (536746012501)

No.	Item Code	Mark	Item Description	Qty.	Substitute	Note
1	536712510003		Mounting Plate	1		85Ah
1	536712510001		Mounting Plate	1		106Ah
2	536712520002		Crash Pad	9		
3	9206001000		Battery12V85Ah	2		LEOCH
3	9206001000		Battery12V106Ah	2		
3	920600100460		Battery12V85Ah	2		LEOCH, EN1175:2020
3	920600100461		Battery12V106Ah	2		
4	536712520001		Mounting Plate	1		
5	910200200053	1	Screw	8		
6	910400100006	1	Flat Washer	8		
7	532212510001		Mounting Plate	1		85Ah
7	532212510003		Mounting Plate	1		106Ah

1=Supply as package; 2=Supply with limit; 3=Phasing out supply; 4=Supply as assembly; 5=Check other lists.

04 Battery holder (lithium battery) (536746012502)



1=Supply as package; 2=Supply with limit; 3=Phasing out supply; 4=Supply as assembly; 5=Check other lists.

04 Battery holder (lithium battery) (536746012502)

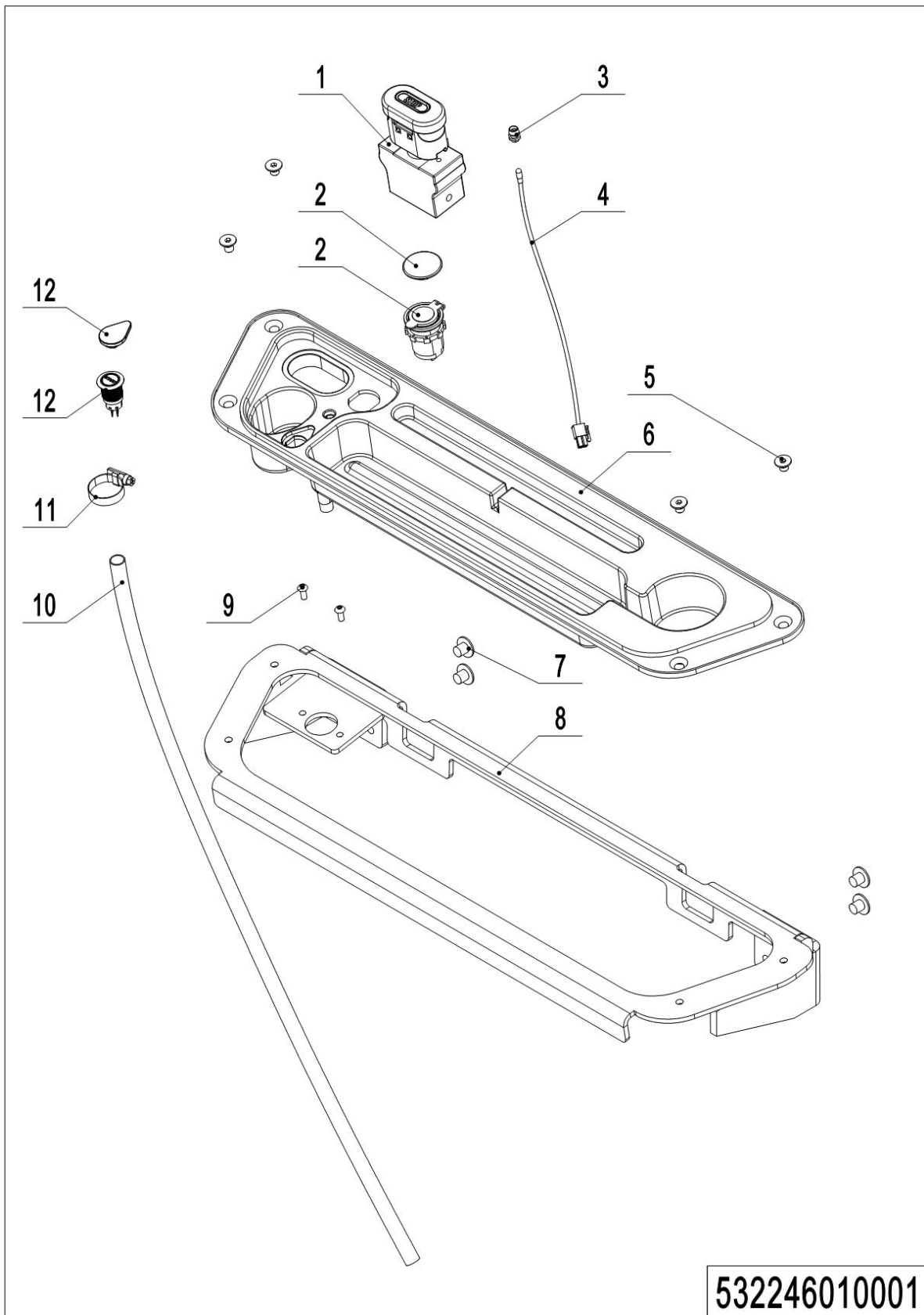
No.	Item Code	Mark	Item Description	Qty.	Substitute	Note
1	910300500004	1	Nut	2		
2	910400100006	1	Flat Washer	8		
3	910200200058	1	Screw	2		
4	536712510002		Mounting Plate	1		
5	9206001000		Li Battery24V60Ah	1		
5	920600100262		Li Battery24V60Ah	1		EN1175:2020
6	536712520002		Crash Pad	5		
7	910200200053	1	Screw	4		
8	536712520001		Mounting Plate	1		

1=Supply as package; 2=Supply with limit; 3=Phasing out supply; 4=Supply as assembly; 5=Check other lists.

06 Control panel assembly (EN1175:2020) (532246010002)

No.	Item Code	Mark	Item Description	Qty.	Substitute	Note
1	920200100009		Emergency Button	1		
2	532210020003		Close Plate	1		Lead-acid battery
2	921900100006		USB interface	1		Lithium battery
3	532210020002		Close Plate	1		Lead-acid battery
3	532233010023		Button	1		Lithium battery
4	922000100024		Lamp Holder	1		
5	532298510006		Indicator Light	1		
6	532210020009		Bezel	1		
7	910200400023	1	Screw	4		
8	941100100005		Screw	4		
9	532210010001		Mounting Plate	1		
10	910200300012	1	Screw	2		
11	920400300024		Socket	1		
12	910200200015	1	Screw	3		

1=Supply as package; 2=Supply with limit; 3=Phasing out supply; 4=Supply as assembly; 5=Check other lists.

06 Control panel assembly (532246010001)

1=Supply as package; 2=Supply with limit; 3=Phasing out supply; 4=Supply as assembly; 5=Check other lists.

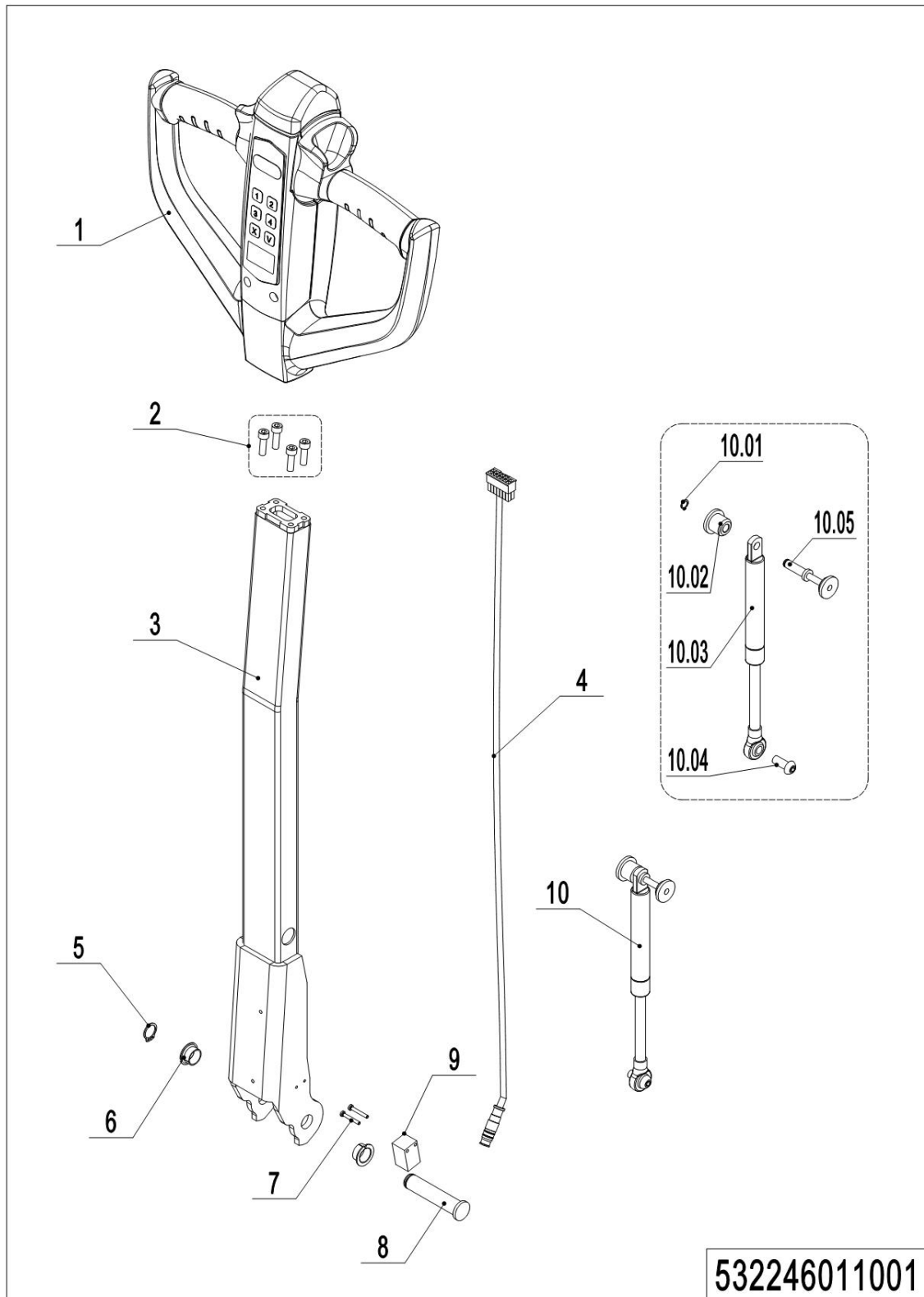
05 Control panel assembly (532246010001)

No.	Item Code	Mark	Item Description	Qty.	Substitute	Note
1	920200100009		Emergency Button	1		
2	532210020003		Close Plate	1		Lead-acid battery
2	921900100006		USB interface	1		Lithium battery
3	922000100024		Lamp Holder	1		
4	532298510006		Indicator Light	1		
5	910200400023	1	Screw	4		
6	532210020001		Bezel	1		
7	941100100005		Screw	4		
8	532210010001		Mounting Plate	1		
9	910200300012	1	Screw	2		
10	532210020008		Pipe	1		
11	911000600008		Hose Clamp	1		
12	532210020002		Close Plate	1		Lead-acid battery
12	532233010023		Button	1		Lithium battery

1=Supply as package; 2=Supply with limit; 3=Phasing out supply; 4=Supply as assembly; 5=Check other lists.

Chapter 4: Steering system, braking system and wheels

01 Tiller (532246011001)



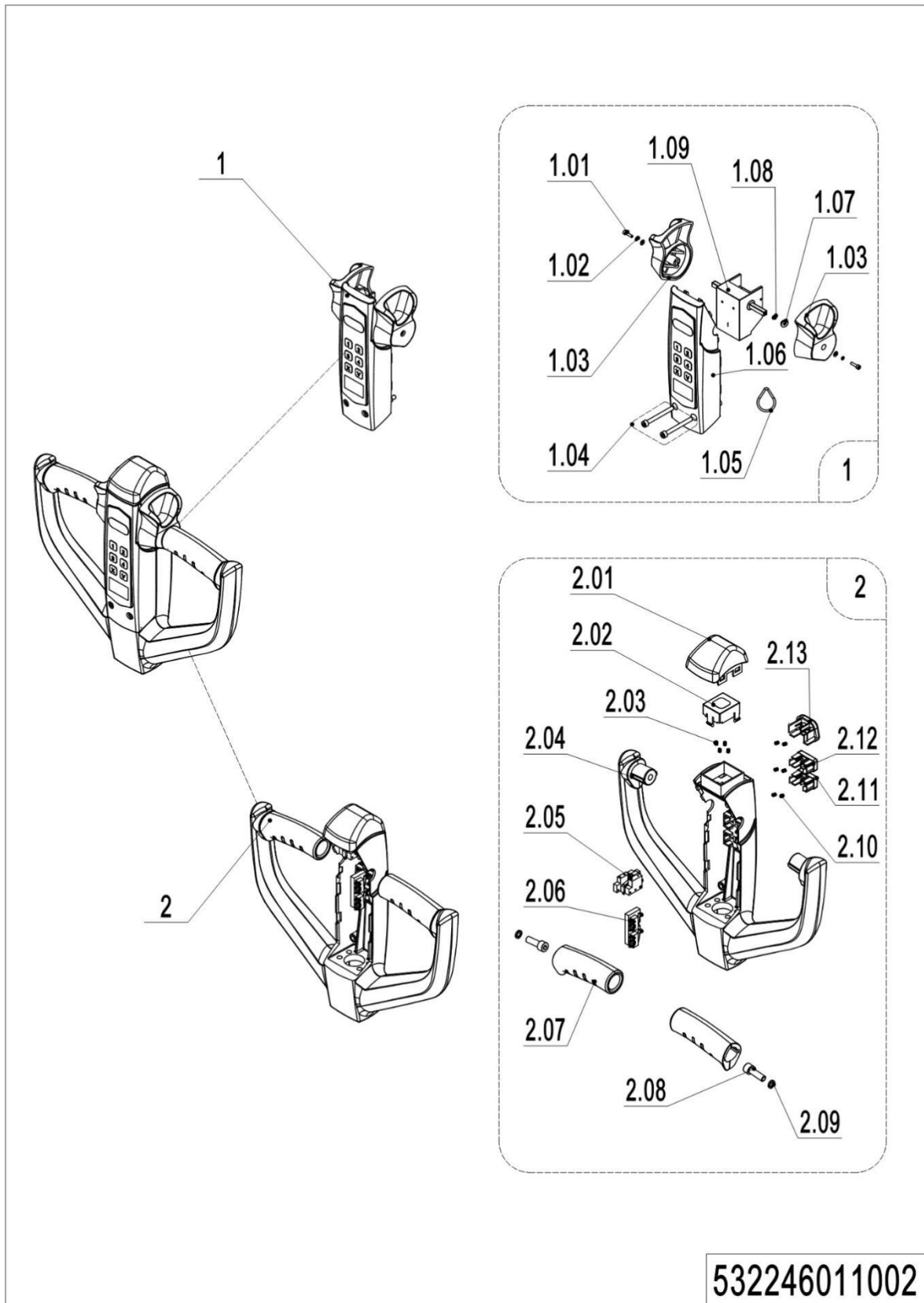
1=Supply as package; 2=Supply with limit; 3=Phasing out supply; 4=Supply as assembly; 5=Check other lists.

01 Tiller (532246011001)

No.	Item Code	Mark	Item Description	Qty.	Substitute	Note
1	922100100021		Tiller	1		
1	922100100028		Tiller	1		IC card
1	922100100116		Tiller	1		EN1175:2020
1	922100100117		Tiller	1		IC card,EN1175:2020
2	910200200036	1	Screw	4		
3	532211010000		Tiller	1		
4	532233010019		Wire Harness	1		
4	532233010041		Wire Harness	1		
5	910401300006		Circlip	1		
6	940500200001		Bushing	2		
7	941101100001	1	Screw	2		
8	508011020004		Pin	1		
9	505633510001		Proximity Switch	1		
10	532298510039		Air Spring Kits	1		
10.1	910401300001		Circlip	1		
10.2	508011020005		Fixing Base	1		
10.3	532211020003		Gas Spring	1		
10.4	941100100011	1	Screw	1		
10.5	508011010002		Pin	1		

1=Supply as package; 2=Supply with limit; 3=Phasing out supply; 4=Supply as assembly; 5=Check other lists.

02 Tiller head (532246011002)



532246011002

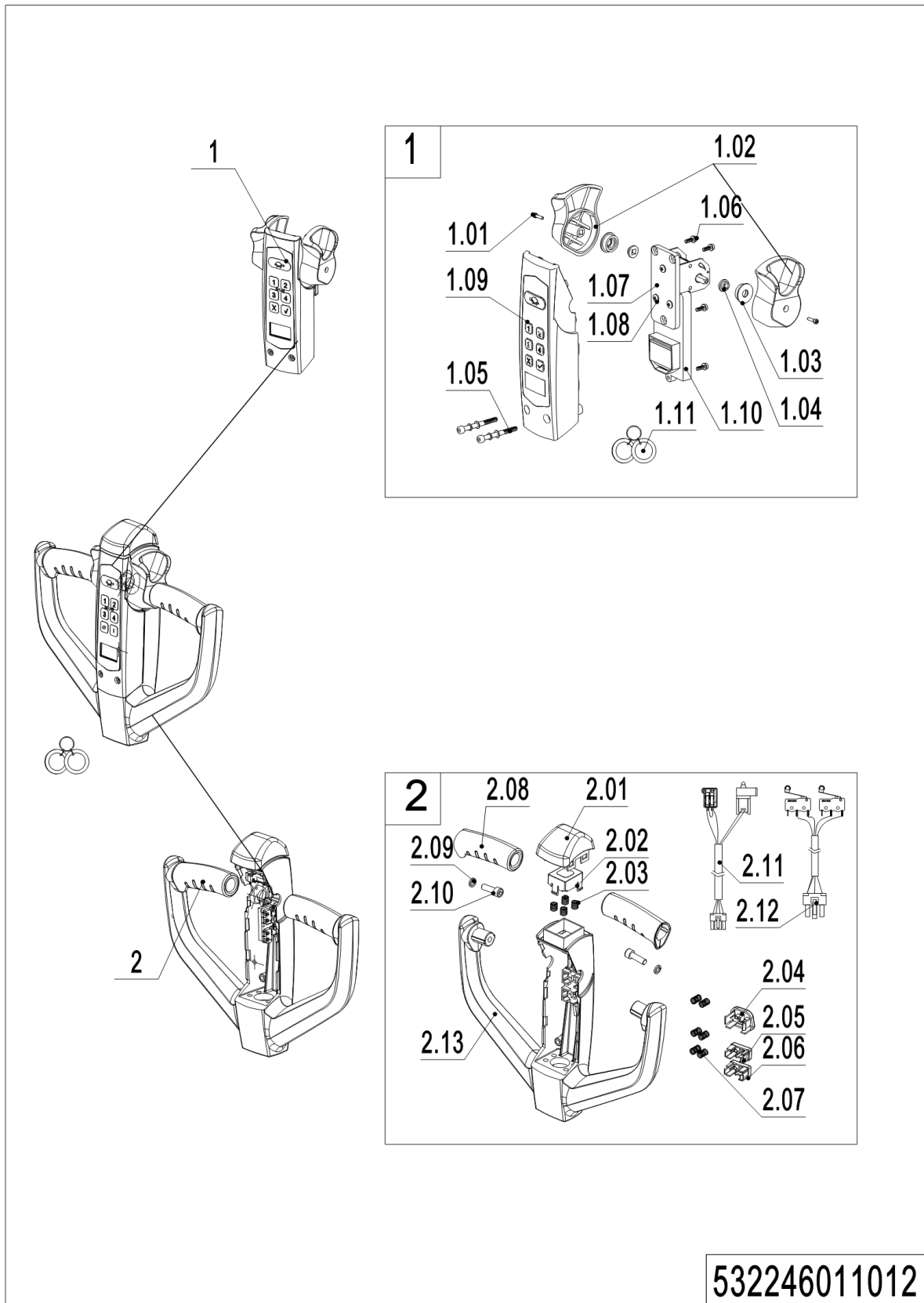
1=Supply as package; 2=Supply with limit; 3=Phasing out supply; 4=Supply as assembly; 5=Check other lists.

02 Tiller head (532246011002)

No.	Item Code	Mark	Item Description	Qty.	Substitute	Note
1	532298510022		Handle Cap Kit	1		
1	532298510023		Handle Cap Kit	1		IC card
1.01	910200200003	1	Screw	2		
1.02	910400500002	1	Spring Washer	2		
1.03	508098520044		Traction lever	1		Left and Right
1.04	910200200159	1	Screw	2		
1.05	508098520027		ID Card	1		With RFID card function
1.06	532298510054		Display Screen kit	1		
1.06	532298510055		Display Screen kit	1		IC card
1.07	508098520015		Bushing	2		
1.08	508098520016		Bushing	2		
1.09	532298510005		Accelerator	1		
1.09	532298510007		Accelerator	1		IC card
2	508098510031		Handle Cap Kit	1		
2.01	508098520018		Cap,Break Switch	1		
2.02	508098520019		Bracket	1		
2.03	502311020018		Spring	4		
2.04	508098520012		Handle Cap	1		
2.05	508098510029		Microswitch Kits	1		
2.06	508098510030		Microswitch Kits	1		
2.07	508098520013		Handle	2		
2.08	910200200058	1	Screw	2		
2.09	910400500006	1	Spring Washer	2		
2.10	502311020022		Spring	6		
2.11	508098520031		Button	1		
2.12	508098520030		Button	1		
2.13	508098520029		Horn Button	1		

1=Supply as package; 2=Supply with limit; 3=Phasing out supply; 4=Supply as assembly; 5=Check other lists.

03 Tiller head (DETONG) (EN1175:2020) (532246011012)



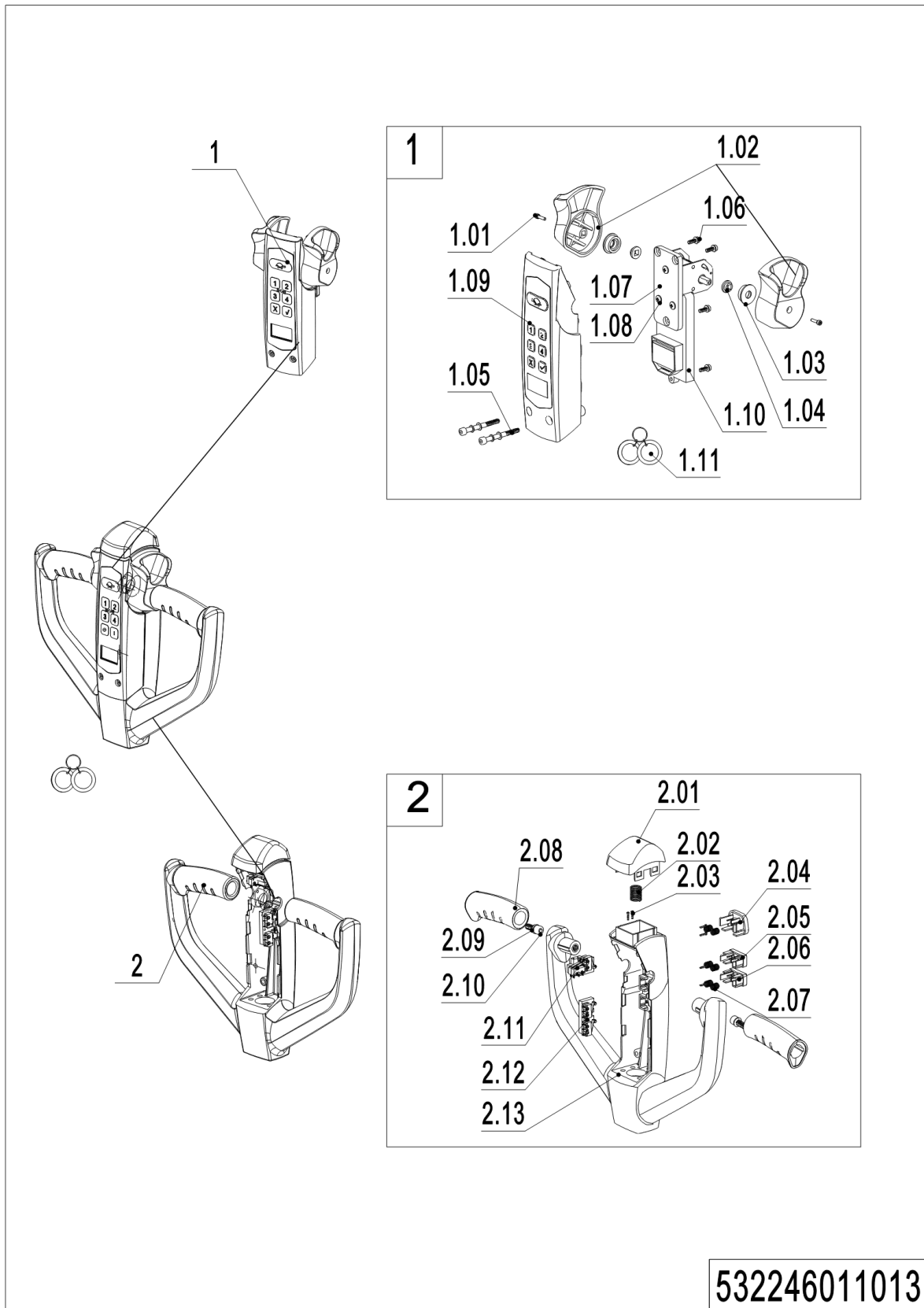
1=Supply as package; 2=Supply with limit; 3=Phasing out supply; 4=Supply as assembly; 5=Check other lists.

03 Tiller head (DETONG) (EN1175:2020) (532246011012)

No.	Item Code	Mark	Item Description	Qty.	Substitute	Note
1	532298510084		Handle Cap Kit	1		
1	532298510085		Handle Cap Kit	1		IC card
1.01	508098520086		Screw	1		
1.02	508098520044		Traction lever	1		
1.03	508098520015		Bushing	1		
1.04	508098520016		Bushing	1		
1.05	910200200159		Screw	2		
1.06	910200200013		Screw	4		
1.07	508098520084		Fixed plate	1		
1.08	910200500020		Screw	3		
1.09	532298510086		Handle Cap Kit	1		
1.09	532298510087		Handle Cap Kit	1		IC card
1.10	532298510088		Accelerator	1		
1.10	532298510089		Accelerator	1		IC card
1.11	508098520027		ID card	1		IC card
2	532298510094		Handle Cap Kit	1		
2.01	508098520018		Cap,Break Switch	1		
2.02	508098520019		Bracket	1		
2.03	502311020018		Spring	4		
2.04	508098520083		Horn Button	1		
2.05	508098520030		Button	1		
2.06	508098520031		Button	1		
2.07	502311020022		Spring	6		
2.08	508098520013		Handle	2		
2.09	910400500006		Spring Washer	2		
2.10	508598520100		Screw	2		
2.11	532298510072		Microswitch Kits	1		
2.12	532298510073		Microswitch Kits	1		
2.13	532298510095		Handle Cap	1		

1=Supply as package; 2=Supply with limit; 3=Phasing out supply; 4=Supply as assembly; 5=Check other lists.

04 Tiller head (SHIJIA) (EN1175:2020) (532246011013)



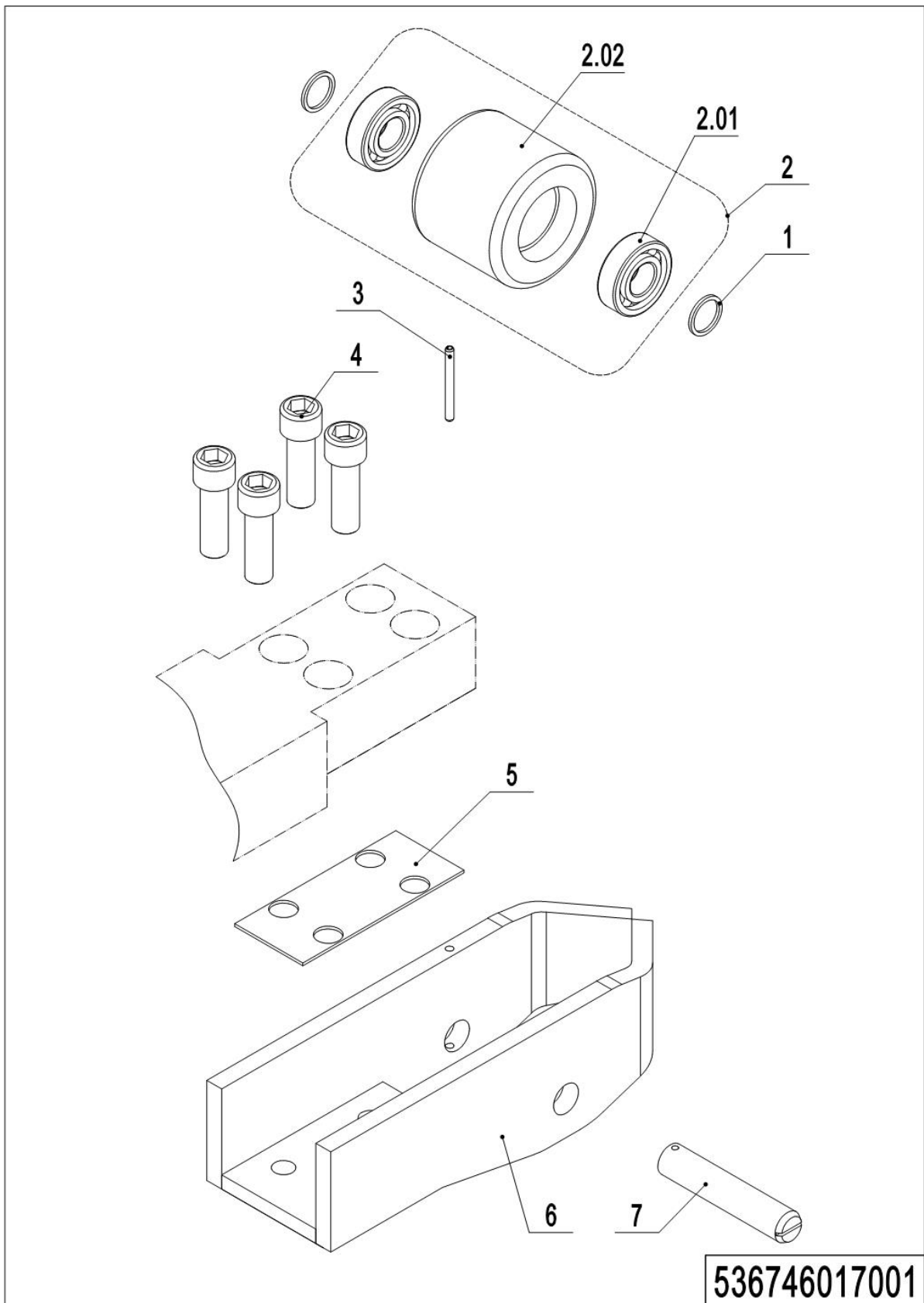
532246011013

1=Supply as package; 2=Supply with limit; 3=Phasing out supply; 4=Supply as assembly; 5=Check other lists.

04 Tiller head (SHIJIA) (EN1175:2020) (532246011013)

No.	Item Code	Mark	Item Description	Qty.	Substitute	Note
1	532298510090		Handle Cap Kit	1		
1	532298510091		Handle Cap Kit	1		IC card
1.01	508098520086		Screw	1		
1.02	508098520044		Traction lever	1		
1.03	508098520015		Bushing	1		
1.04	508098520016		Bushing	2		
1.05	910200200159		Screw	4		
1.06	910200200013		Screw	1		
1.07	508098520084		Fixed plate	3		
1.08	910200500020		Screw	1		
1.09	532298510086		Handle Cap Kit	1		
1.09	532298510087		Handle Cap Kit	1		IC card
1.10	532298510092		Accelerator	1		
1.10	532298510093		Accelerator	1		IC card
1.11	508098520027		ID card	1		IC card
2	532298510096		Handle Cap Kit	1		
2.01	508098520018		Bracket	1		
2.02	502311020018		Spring	4		
2.03	532298510076		Screw	6		
2.04	508098520083		Horn Button	1		
2.05	508098520030		Button	1		
2.06	508098520031		Button	1		
2.07	502311020022		Spring	6		
2.08	508098520013		Handle	2		
2.09	910400500006		Spring Washer	2		
2.10	508598520100		Screw	2		
2.11	532298510074		Microswitch Kits	1		
2.12	532298510075		Microswitch Kits	1		
2.13	532298510097		Handle Cap	1		

1=Supply as package; 2=Supply with limit; 3=Phasing out supply; 4=Supply as assembly; 5=Check other lists.

05 Load wheel (536746017001)

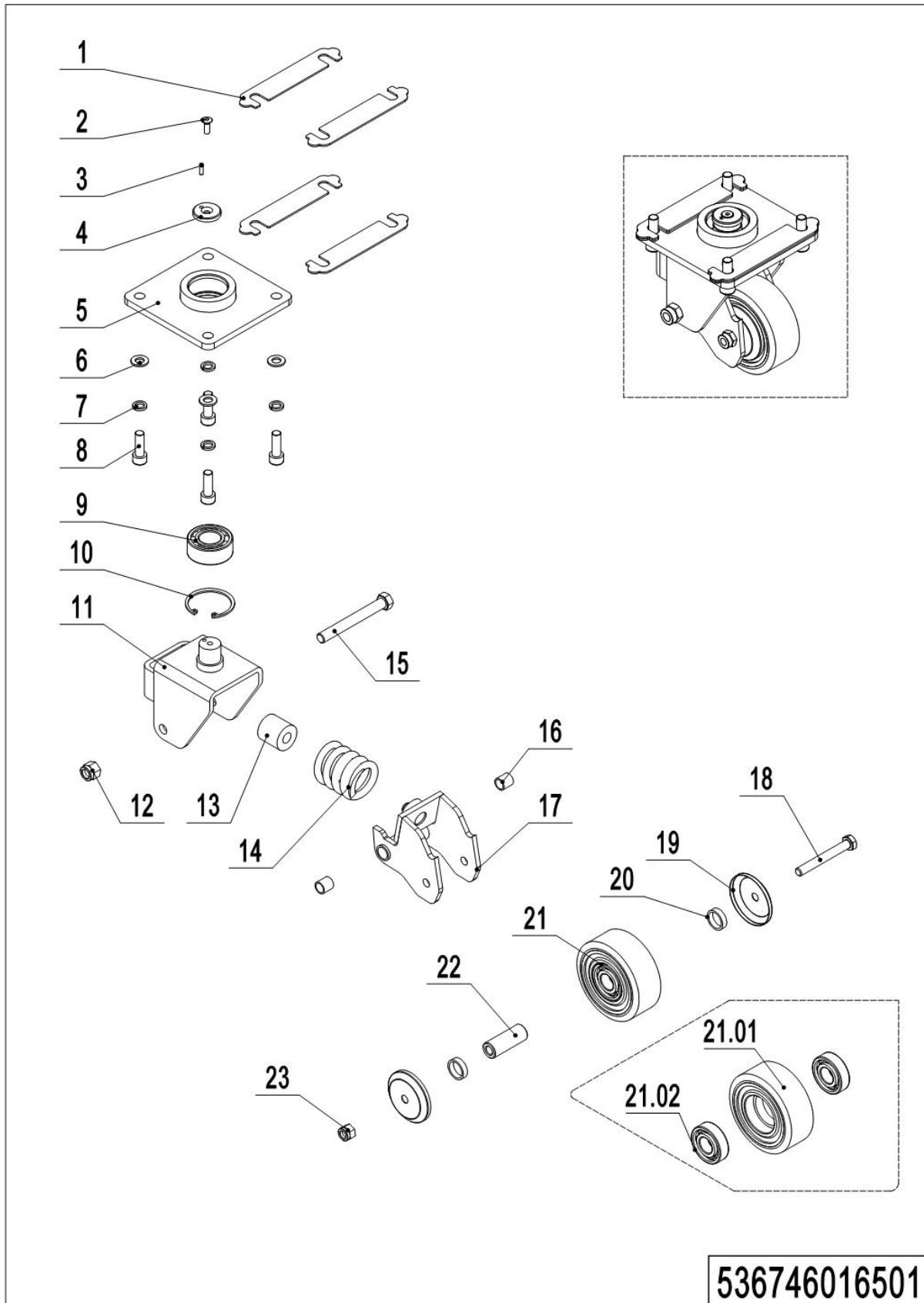
1=Supply as package; 2=Supply with limit; 3=Phasing out supply; 4=Supply as assembly; 5=Check other lists.

05 Load wheel (536746017001)

No.	Item Code	Mark	Item Description	Qty.	Substitute	Note
1	940600500053		Washer	4		
2	532998510000		Wheel	2		
2.01	910700200019		Bearing	4		
2.02	940300300009		WheelΦ84x70	2		
3	910600400030	1	Spring Pin	2		
4	910200200123	1	Screw	8		
5	536717020001		Pad	2		
6	536717010001		Wheel Carrier	2		
7	536717020002		Axle	2		

1=Supply as package; 2=Supply with limit; 3=Phasing out supply; 4=Supply as assembly; 5=Check other lists.

06 Side wheel (536746016501)



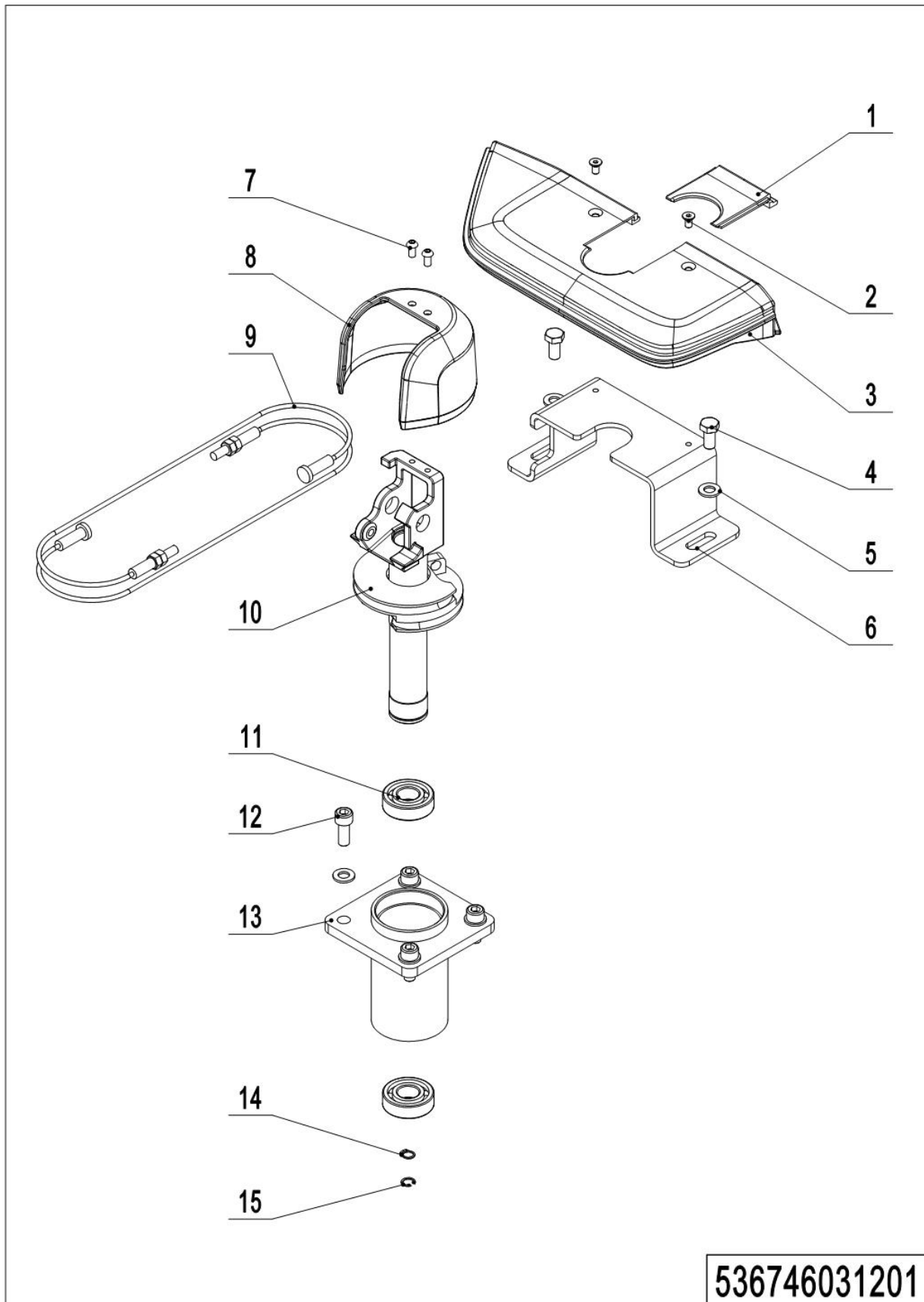
1=Supply as package; 2=Supply with limit; 3=Phasing out supply; 4=Supply as assembly; 5=Check other lists.

06 Side wheel (536746016501)

No.	Item Code	Mark	Item Description	Qty.	Substitute	Note
--	536716510000		Caster Assembly	2		
1	536716520001		Adjustment Pad	8		
2	941100300001	1	Screw	2		
3	910600100004	1	Cylindrical Pin	2		
4	505616520007		Retaining Ring	2		
5	536716510002		Plate	2		
6	910400100007	1	Flat Washer	8		
7	910400500007	1	Spring Washer	8		
8	910200200077	1	Screw	8		
9	910700500002		Bearing	2		
10	910401400016		Circlip	2		
11	505616510001		Wheel Carrier	2		
12	910300500006	1	Nut	1		
13	505616520000		Spring	2		
14	940400500006		Spring	2		
15	941100200002	1	Bolt	2		
16	940500100002		Bushing	4		
17	536716510001		Whirling Arm	2		
18	910100100038	1	Bolt	2		
19	505616520011		Dust Cap	4		
20	505616520012		Check Ring	4		
21	503598510003		Caster Assembly	2		
21.01	940300300018		WheelΦ100x40	2		
21.02	910700200019		Bearing	4		
22	505616520013		Bushing	2		
23	910300500005	1	Nut	1		

1=Supply as package; 2=Supply with limit; 3=Phasing out supply; 4=Supply as assembly; 5=Check other lists.

07 Manual steering (536746031201)



1=Supply as package; 2=Supply with limit; 3=Phasing out supply; 4=Supply as assembly; 5=Check other lists.

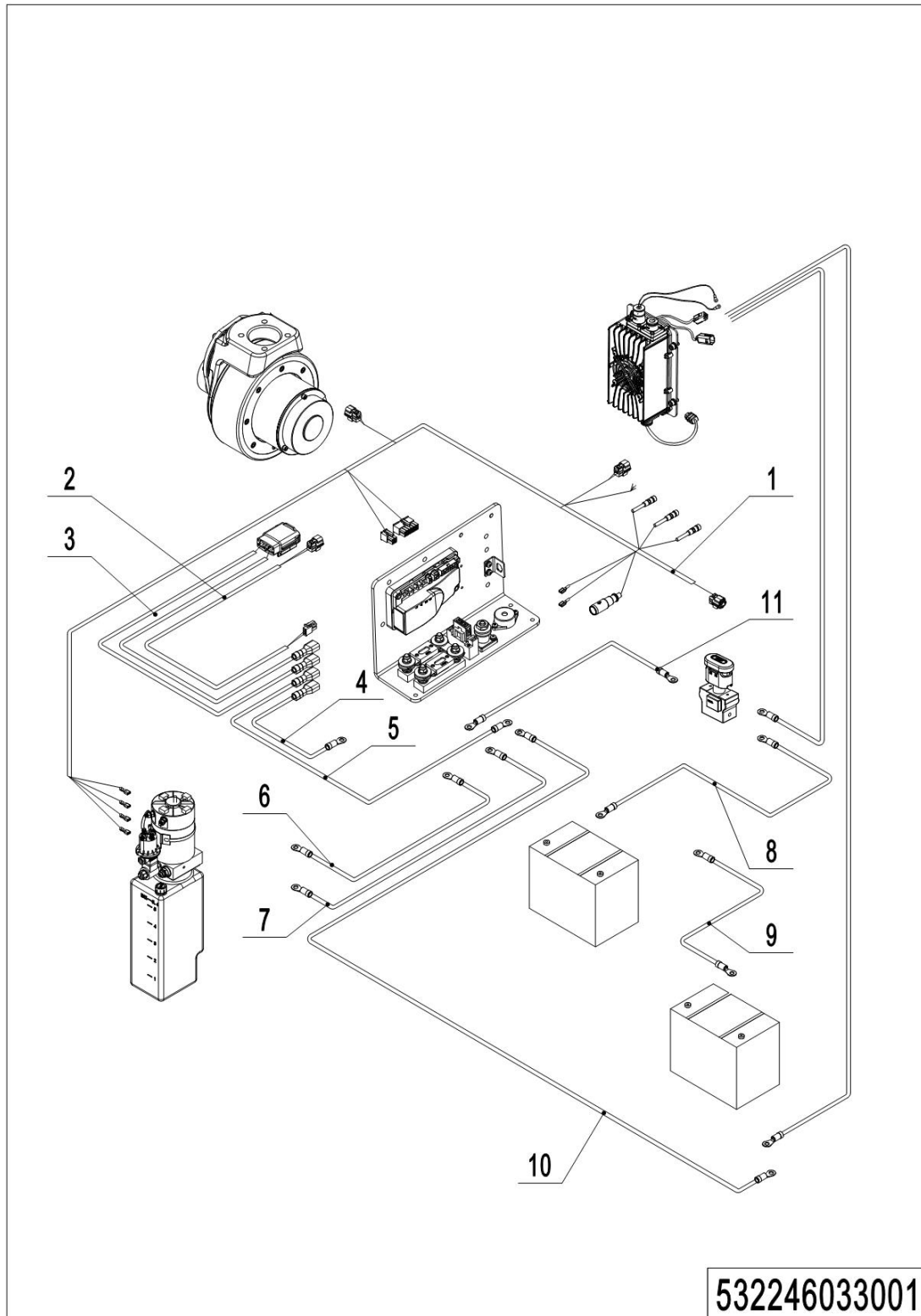
07 Manual steering (536746031201)

No.	Item Code	Mark	Item Description	Qty.	Substitute	Note
1	532231220011		Handle Cap	1		
2	910200400016	1	Screw	2		
3	532231220010		Handle Cap	1		
4	910100300035	1	Bolt	2		
5	910400100007	1	Flat Washer	6		
6	532231220008		Pedestal	1		
7	910200300017	1	Screw	2		
8	532211020001		Protective Cover	1		
9	536731210004		Wirerope	2		
10	536731210002		handle Spindle	1		
11	910700200007		Bearing	2		
12	910200200076	1	Screw	4		
13	536731210003		Bracket	1		
14	910401300018	1	Circlip	1		
15	910401400018	1	Circlip	1		

1=Supply as package; 2=Supply with limit; 3=Phasing out supply; 4=Supply as assembly; 5=Check other lists.

Chapter 5: Electrical parts and wire harness

01 Wire harness (532246033001)



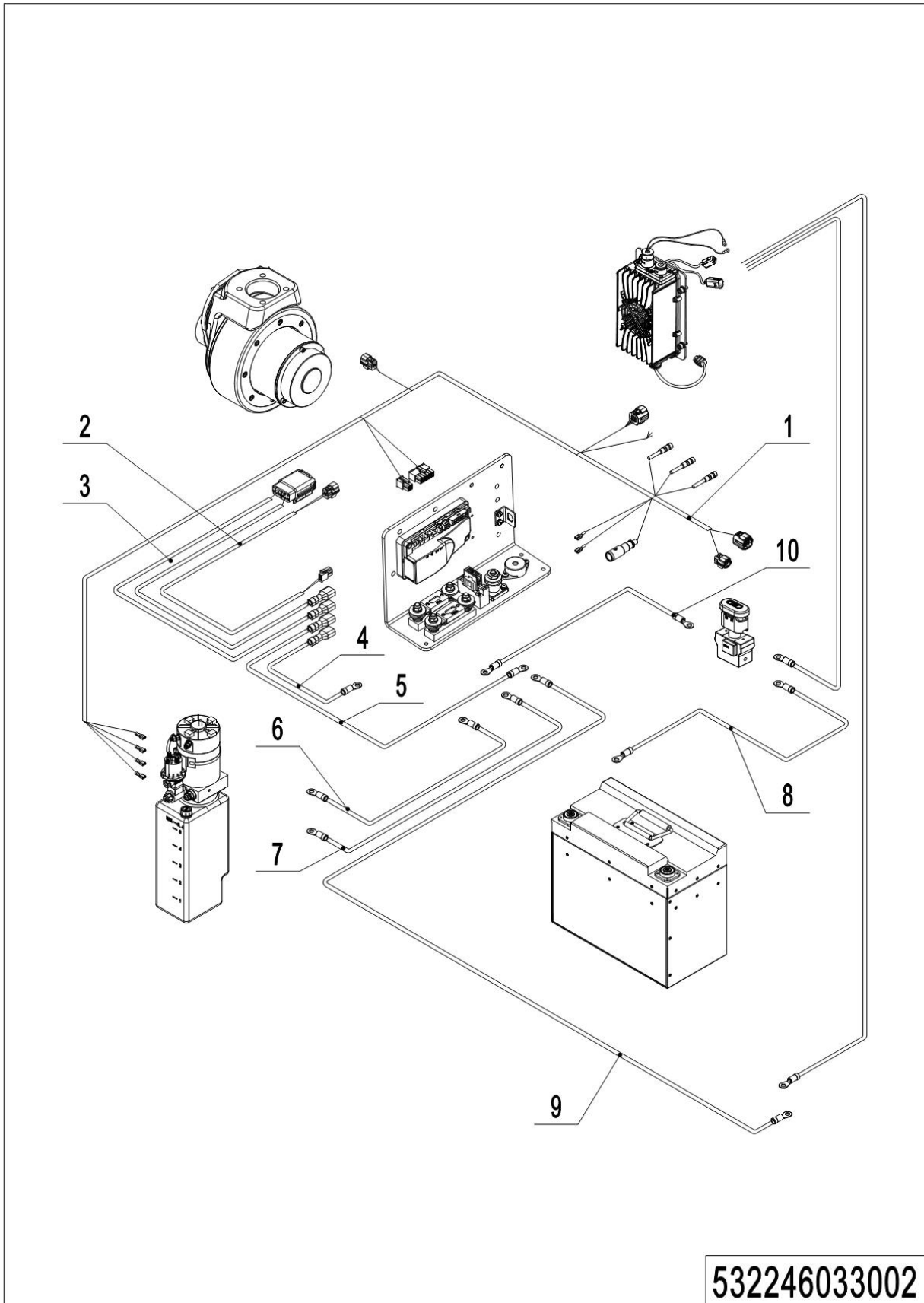
1=Supply as package; 2=Supply with limit; 3=Phasing out supply; 4=Supply as assembly; 5=Check other lists.

01 Wire harness (532246033001)

No.	Item Code	Mark	Item Description	Qty.	Substitute	Note
1	532233010000		Wire Harness	1		
2	532233010003		Wire Harness	1		
3	532233010004		Wire Harness	1		
4	532233010005		Cables	1		
5	532233010006		Cables	1		
6	532233010007		Cable	1		
7	532233010009		Cable	1		
8	532233010010		Cable	1		85AH
8	532233010013		Cable	1		106AH
9	532233010011		Cable	1		85AH
9	532233010014		Cable	1		106AH
10	532233010012		Cable	1		85AH
10	532233010015		Cable	1		106AH
11	532233010016		Cable	1		

1=Supply as package; 2=Supply with limit; 3=Phasing out supply; 4=Supply as assembly; 5=Check other lists.

02 Wire harness (lithium battery) (532246033002)

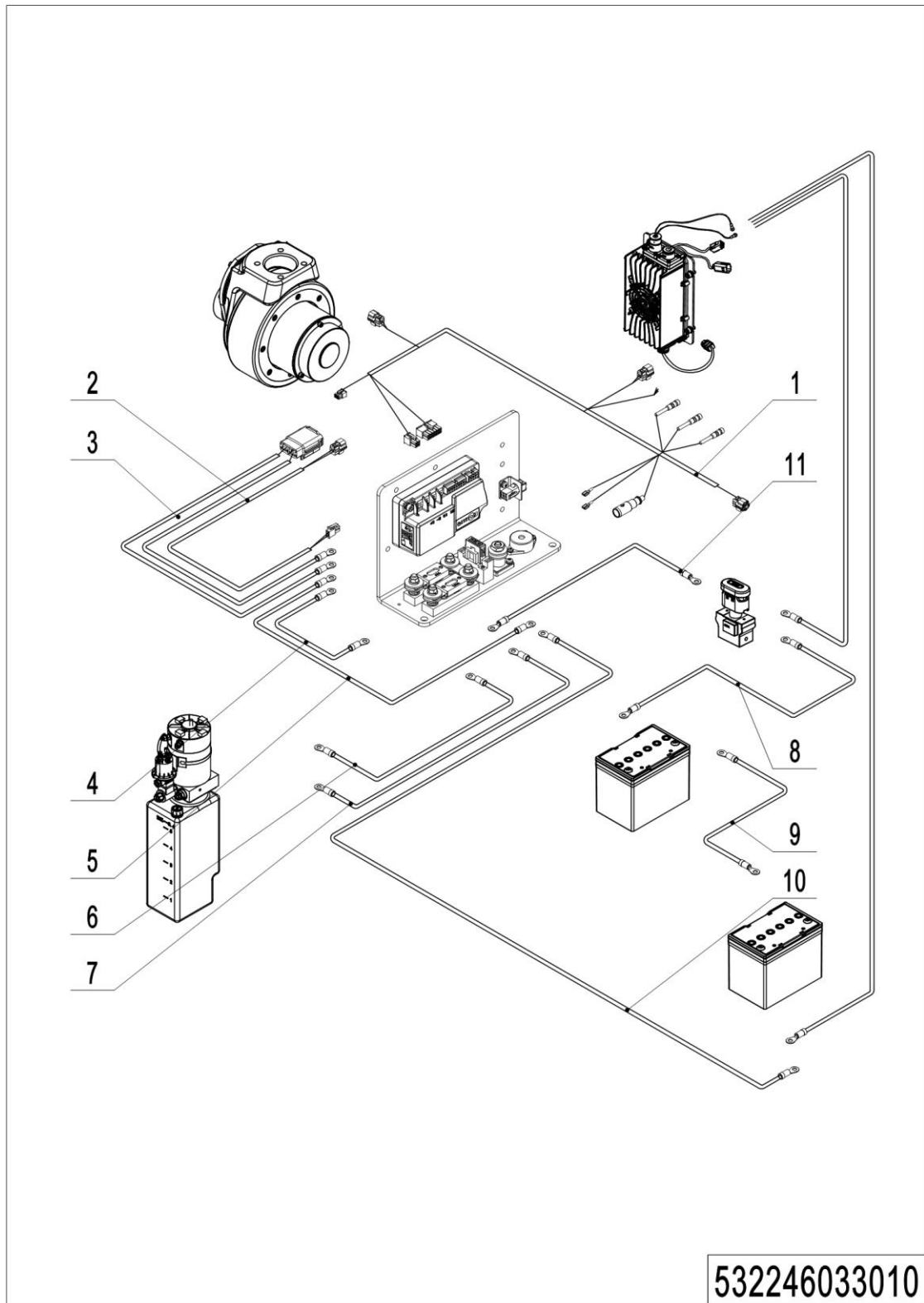


1=Supply as package; 2=Supply with limit; 3=Phasing out supply; 4=Supply as assembly; 5=Check other lists.

03 Wire harness (lithium battery) (532246033002)

No.	Item Code	Mark	Item Description	Qty.	Substitute	Note
1	532233010001		Wire Harness	1		
2	532233010003		Wire Harness	1		
3	532233010004		Wire Harness	1		
4	532233010005		Cables	1		
5	532233010006		Cables	1		
6	532233010007		Cable	1		
7	532233010009		Cable	1		
8	532233010020		Cable	1		
9	532233010021		Cable	1		
10	532233010016		Cable	1		

1=Supply as package; 2=Supply with limit; 3=Phasing out supply; 4=Supply as assembly; 5=Check other lists.

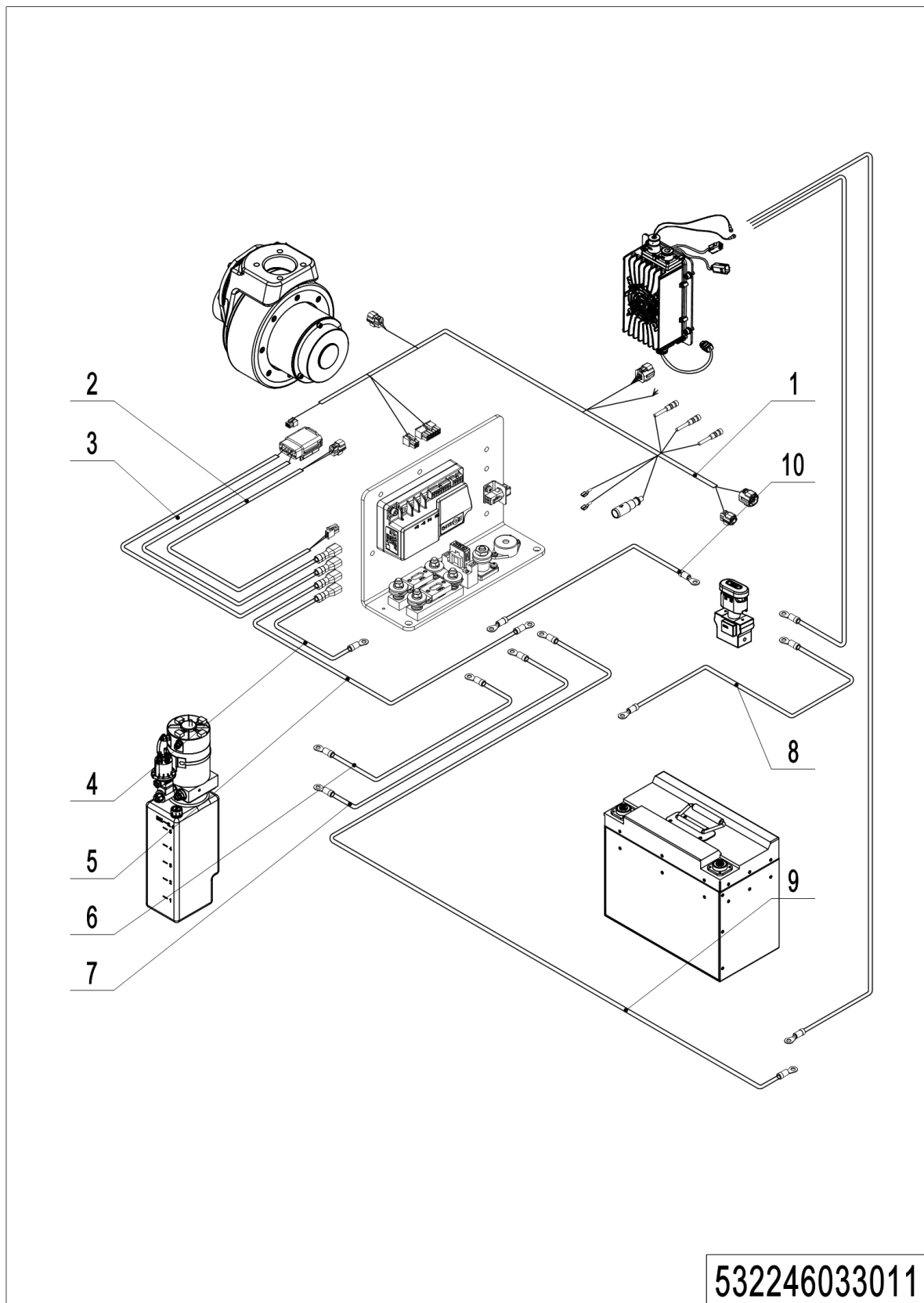
03 Wire harness (EN1175:2020) (532246033010)

1=Supply as package; 2=Supply with limit; 3=Phasing out supply; 4=Supply as assembly; 5=Check other lists.

02 Wire harness (EN1175:2020) (532246033010)

No.	Item Code	Mark	Item Description	Qty.	Substitute	Note
1	532233010032		Wire Harness	1		
2	532233010035		Wire Harness	1		
3	532233010036		Wire Harness	1		
4	532233010037		Cables	1		
5	532233010038		Cables	1		
6	532233010007		Cable	1		
7	532233010009		Cable	1		
8	532233010010		Cable	1		85AH
8	532233010013		Cable	1		106AH
9	532233010011		Cable	1		85AH
9	532233010014		Cable	1		106AH
10	532233010012		Cable	1		85AH
10	532233010015		Cable	1		106AH
11	532233010016		Cable	1		

1=Supply as package; 2=Supply with limit; 3=Phasing out supply; 4=Supply as assembly; 5=Check other lists.

04 Wire harness (lithium battery, EN1175:2020) (532246033011)

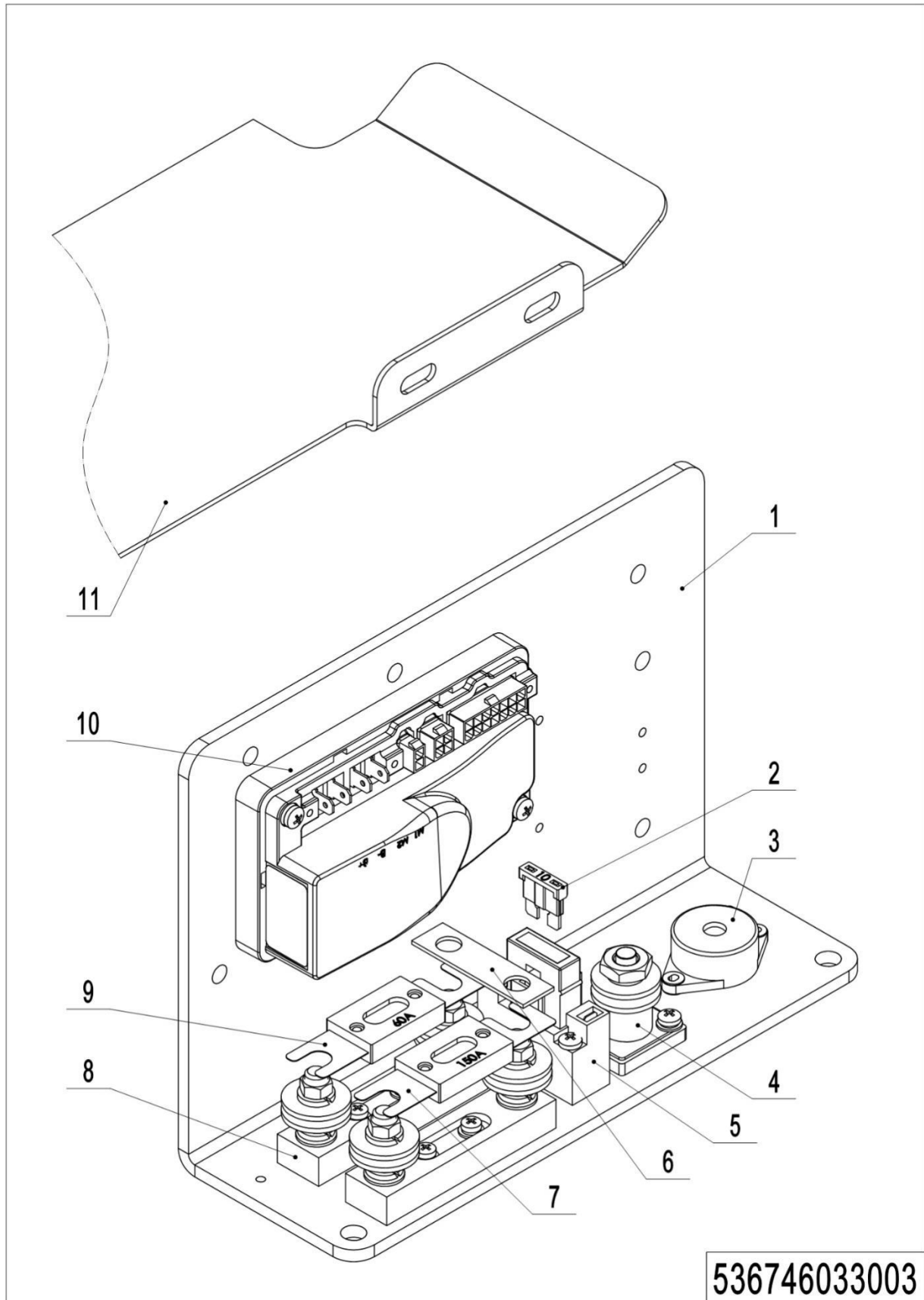
1=Supply as package; 2=Supply with limit; 3=Phasing out supply; 4=Supply as assembly; 5=Check other lists.

04 Wire harness (lithium battery, EN1175:2020) (532246033011)

No.	Item Code	Mark	Item Description	Qty.	Substitute	Note
1	532233010042		Wire Harness	1		
2	532233010035		Wire Harness	1		
3	532233010036		Wire Harness	1		
4	532233010037		Cables	1		
5	532233010038		Cables	1		
6	532233010007		Cable	1		
7	532233010009		Cable	1		
8	532233010020		Cable	1		
9	532233010021		Cable	1		
10	532233010016		Cable	1		

1=Supply as package; 2=Supply with limit; 3=Phasing out supply; 4=Supply as assembly; 5=Check other lists.

05 Electrical control unit (536746033003)



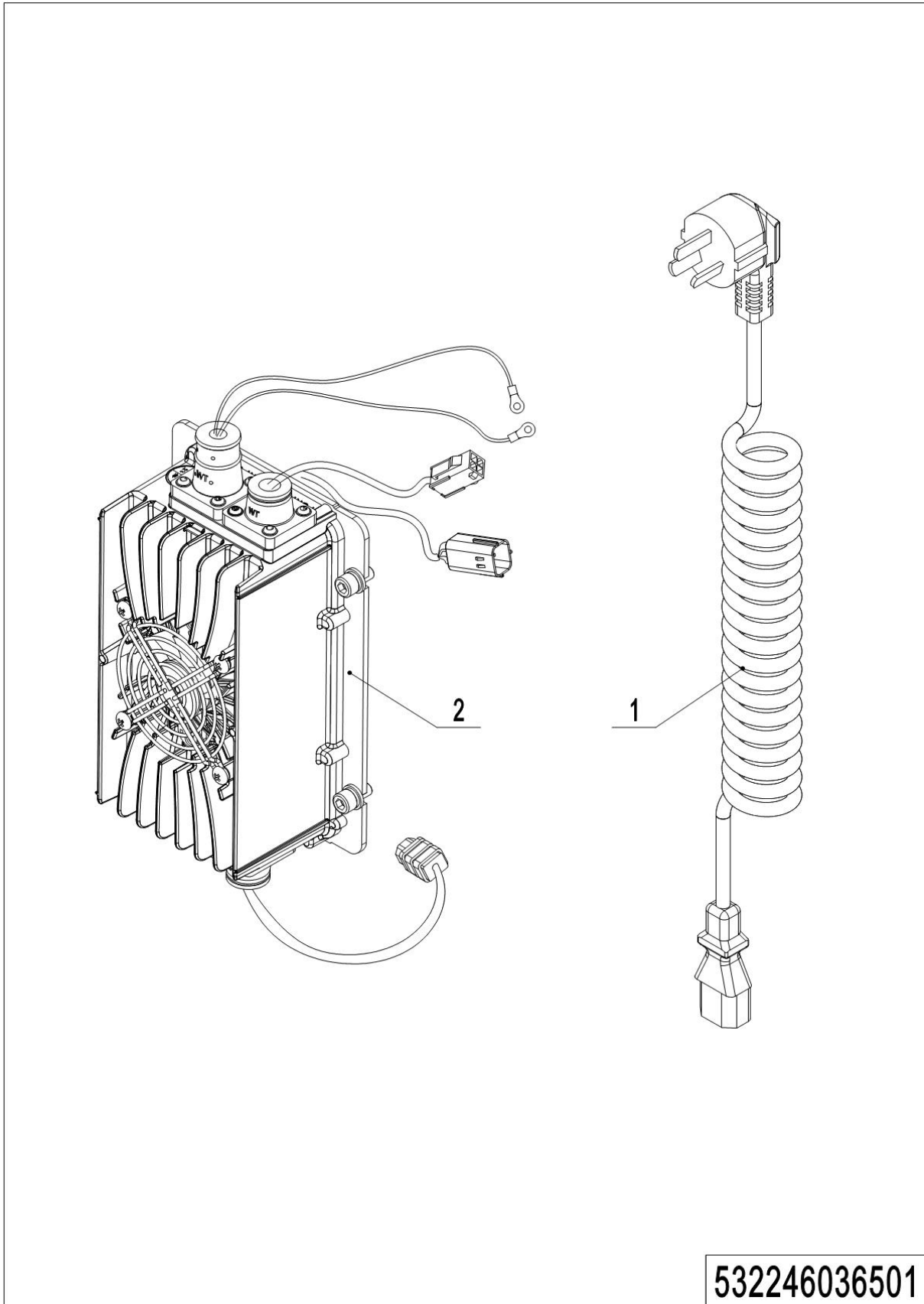
1=Supply as package; 2=Supply with limit; 3=Phasing out supply; 4=Supply as assembly; 5=Check other lists.

05 Electrical control unit (536746033003)

No.	Item Code	Mark	Item Description	Qty.	Substitute	Note
1	532233020001		Mounting Plate	1		
2	920100200002		Fuse	1		
3	920500100007		Horn	1		
4	920100400001		Fuse Holder	1		
5	920100400006		Fuse Holder	1		
6	505633020003		Copper Busbar	1		
7	920100100007		Fuse	1		
8	920100400002		Fuse Holder	2		
9	920100100003		Fuse	1		
10	9214001000		Controller	1		
10	921400100174		Controller	1		EN1175:2020
11	536712520008		Baffle	1		lead-acid battery
11	536712520009		Baffle	1		Lithium battery

1=Supply as package; 2=Supply with limit; 3=Phasing out supply; 4=Supply as assembly; 5=Check other lists.

06 Charger (lead-acid battery) (532246036501)

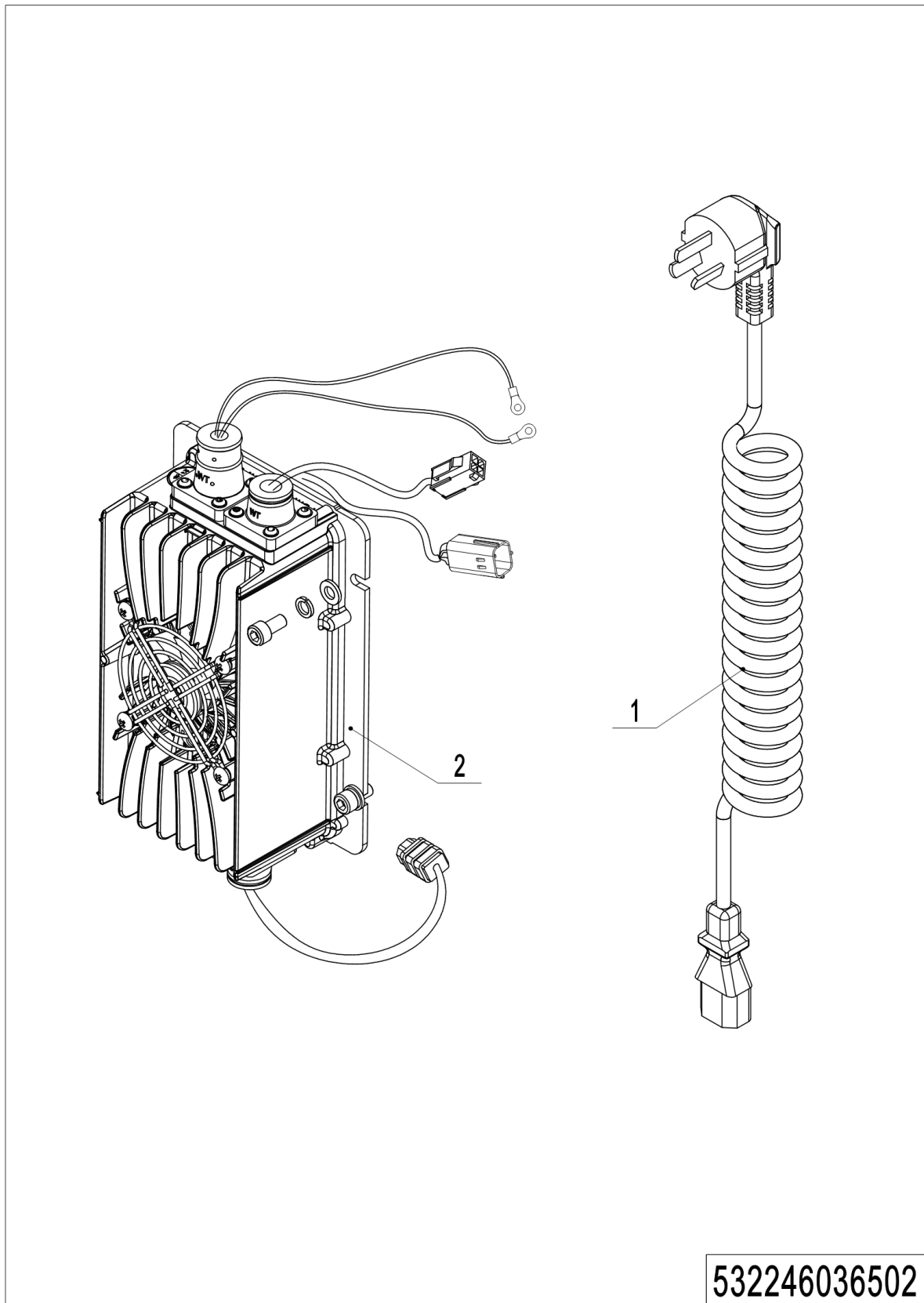


1=Supply as package; 2=Supply with limit; 3=Phasing out supply; 4=Supply as assembly; 5=Check other lists.

06 Charger (lead-acid battery) (532246036501)

No.	Item Code	Mark	Item Description	Qty.	Substitute	Note
1	921500200008		Spring Cable (Asia)	1		
1	921500200005		Spring Cable(EU)	1		EN1175:2020
1	921500200003		Spring Cable(AUS)	1		
1	921500200004		Spring Cable(ENG)	1		EN1175:2020
1	921500200002		Spring Cable(USA)	1		
1	921500200037		Spring Cable(ARG)	1		
1	921500200006		Spring Cable(ITY)	1		EN1175:2020
1	921500200007		Spring Cable(SWD)	1		EN1175:2020
1	921500200029		Spring Cable(ISR)	1		
1	921500200061		Spring Cable(BRA)	1		
1	921500200065		Spring Cable(ZA)	1		
1	921500200067		Spring Cable(JP)	1		
1	921500200066		Spring Cable(IND)	1		
1	921500200068		Spring Cable(Peru)	1		
2	921000100055		Charger24V12V	1		

1=Supply as package; 2=Supply with limit; 3=Phasing out supply; 4=Supply as assembly; 5=Check other lists.

07 Charger (lithium battery) (532246036502)

1=Supply as package; 2=Supply with limit; 3=Phasing out supply; 4=Supply as assembly; 5=Check other lists.

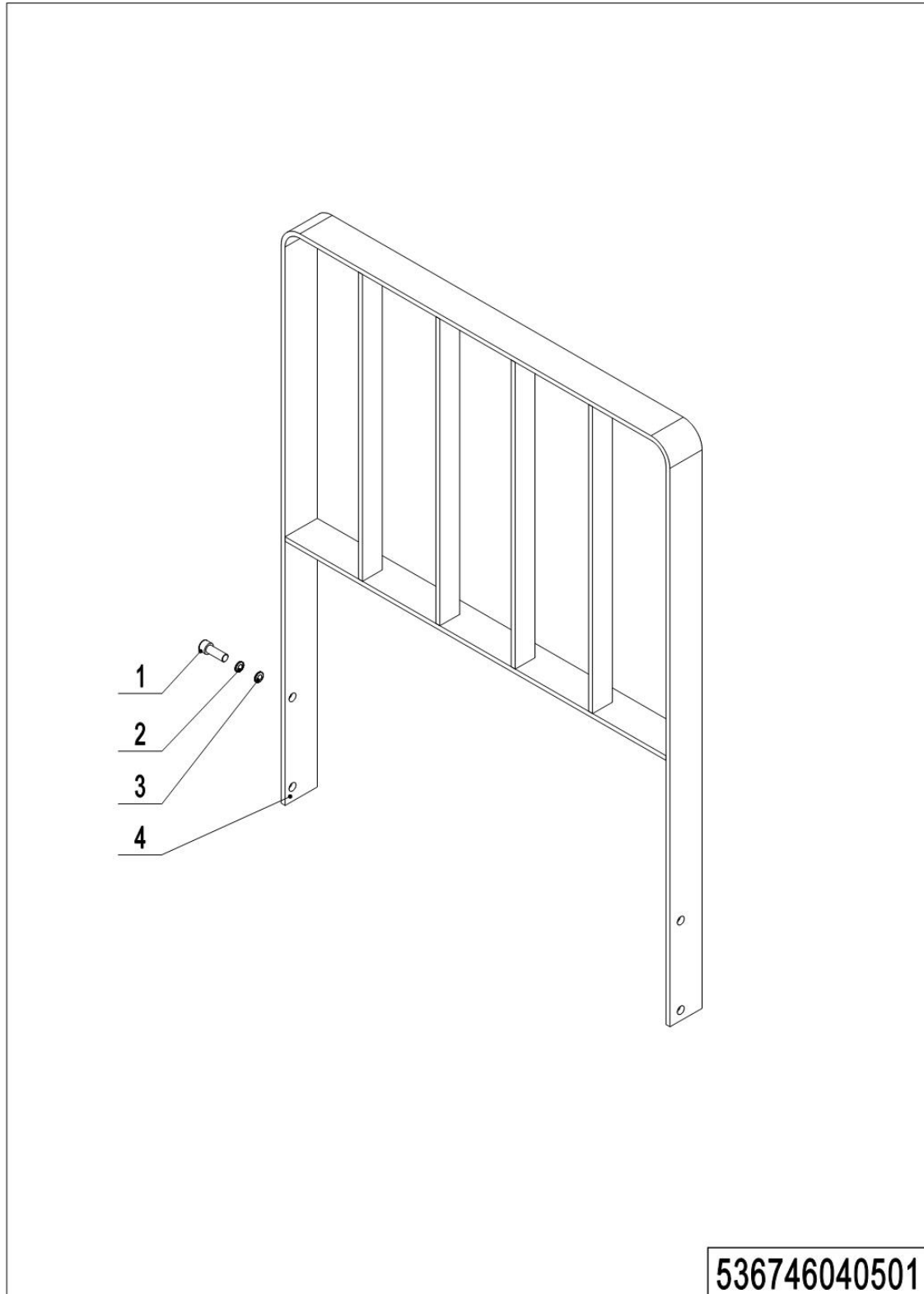
07 Charger (lithium battery) (532246036502)

No.	Item Code	Mark	Item Description	Qty.	Substitute	Note
1	921500200008		Spring Cable (Asia)	1		
1	921500200005		Spring Cable(EU)	1		EN1175:2020
1	921500200003		Spring Cable(AUS)	1		
1	921500200004		Spring Cable(ENG)	1		EN1175:2020
1	921500200002		Spring Cable(USA)	1		
1	921500200037		Spring Cable(ARG)	1		
1	921500200006		Spring Cable(ITY)	1		EN1175:2020
1	921500200007		Spring Cable(SWD)	1		EN1175:2020
1	921500200029		Spring Cable(ISR)	1		
1	921500200061		Spring Cable(BRA)	1		
1	921500200065		Spring Cable(ZA)	1		
1	921500200067		Spring Cable(JP)	1		
1	921500200066		Spring Cable(IND)	1		
1	921500200068		Spring Cable(Peru)	1		
2	921000100052		Charger 24V25A	1		

1=Supply as package; 2=Supply with limit; 3=Phasing out supply; 4=Supply as assembly; 5=Check other lists.

Chapter 6: Special equipment

01 Load backrest (536746040501)



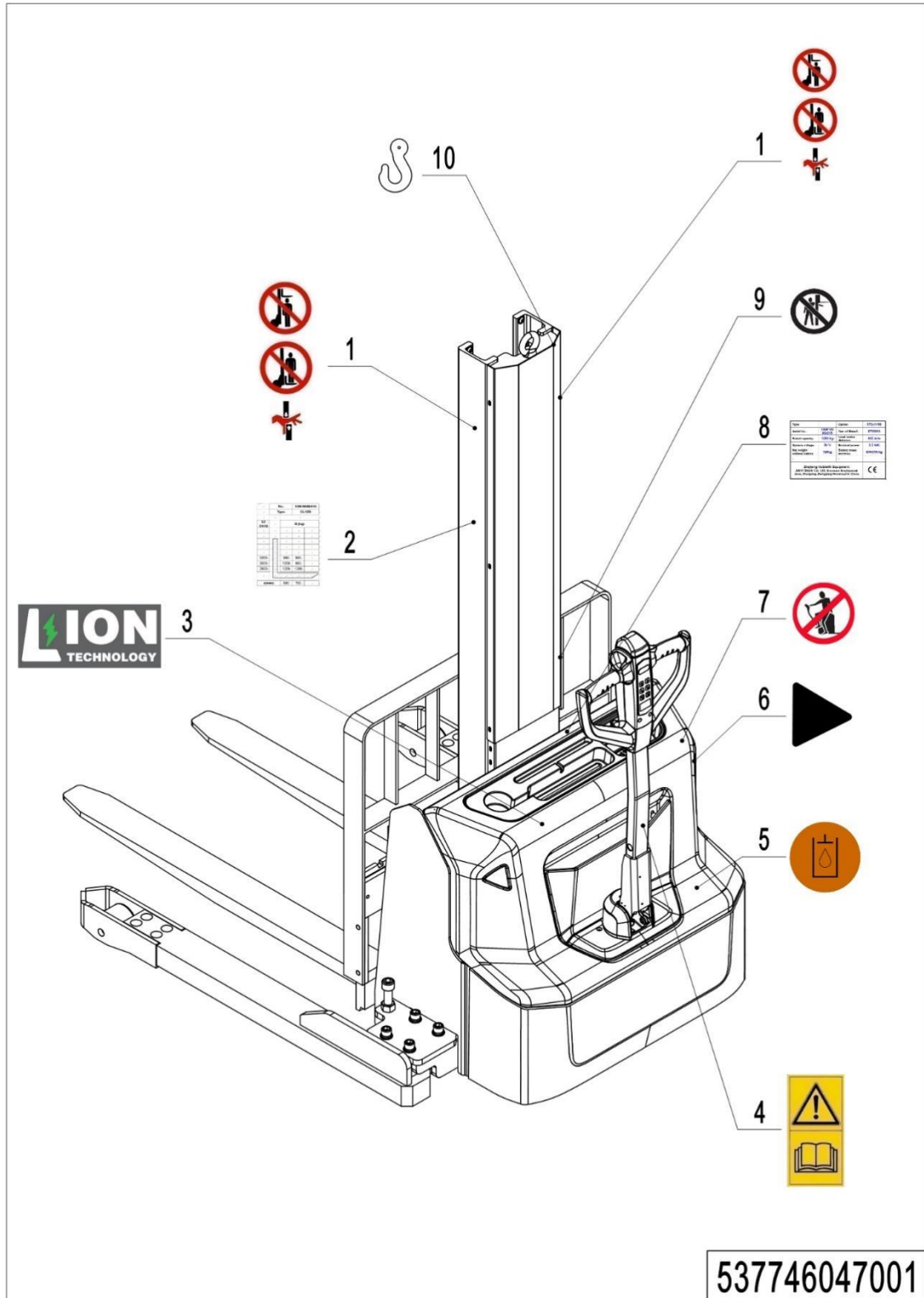
1=Supply as package; 2=Supply with limit; 3=Phasing out supply; 4=Supply as assembly; 5=Check other lists.

01 Load backrest (536746040501)

No.	Item Code	Mark	Item Description	Qty.	Substitute	Note
1	910200200075	1	Screw	4		
2	910400500007	1	Spring Washer	4		
3	910400100007	1	Flat Washer	4		
4	532340510003		Load Backrest	1		

Chapter 7: Others

01 Labels and decals (EU) (537746047001)



1=Supply as package; 2=Supply with limit; 3=Phasing out supply; 4=Supply as assembly; 5=Check other lists.

01 Labels and decals (EU) (537746047001)

No.	Item Code	Mark	Item Description	Qty.	Substitute	Note
1	941200100004		Label	2		
2	537747520001		Load Capacity Diagram	1		
3	532247020002		Label	1		For lithium battery
4	941200300002		Label	1		
5	941200300003		Label	1		Internal
6	532247020000		Label	2		
7	941200100003		Label	1		
8	537747520017		Label (ID plate with CE mark)	1		
9	941200100006		Label	1		
10	941200300001		Label	2		

1=Supply as package; 2=Supply with limit; 3=Phasing out supply; 4=Supply as assembly; 5=Check other lists.

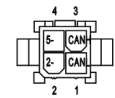
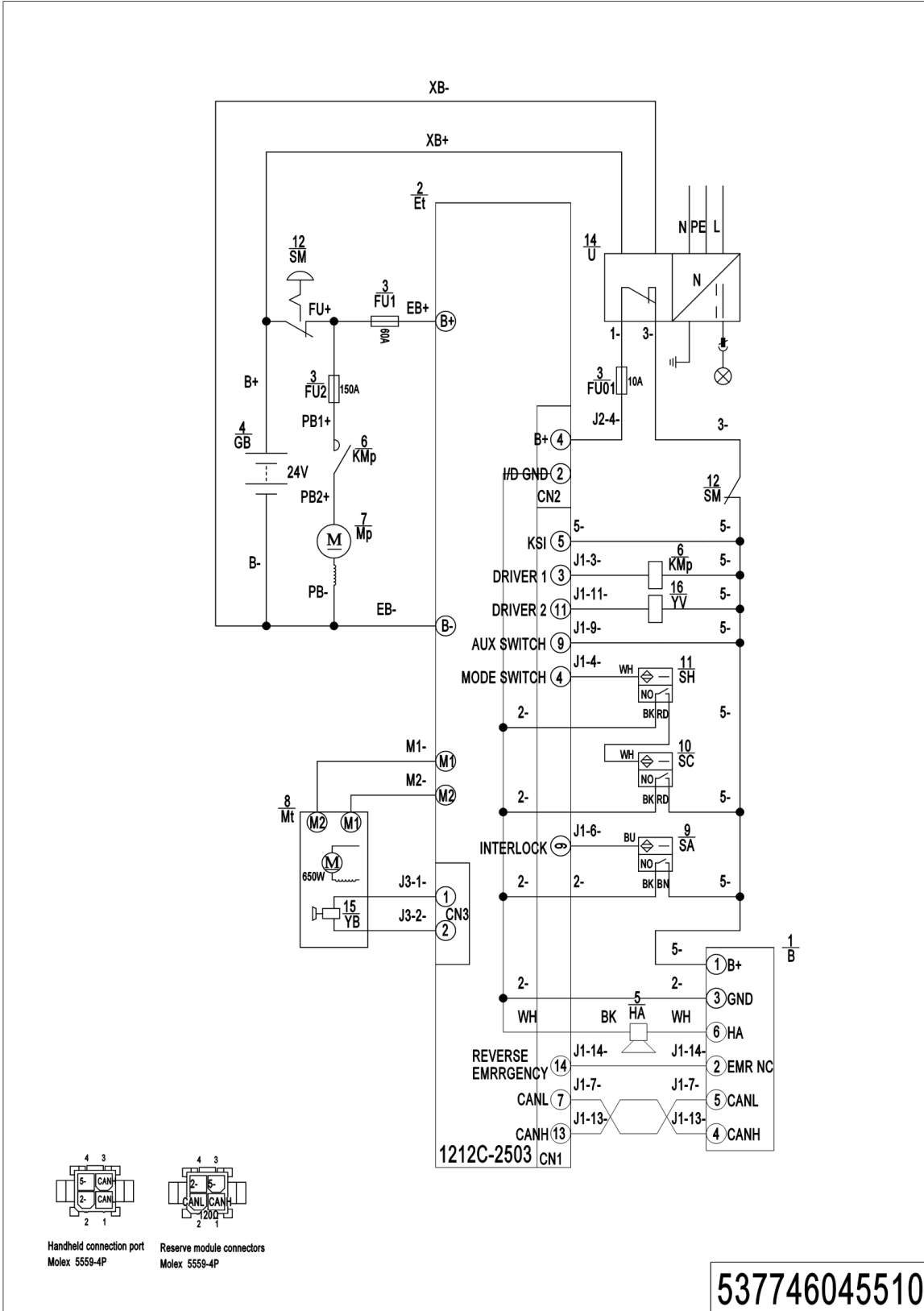
02 Labels and decals (USA) (537746047002)

No.	Item Code	Mark	Item Description	Qty.	Substitute	Note
1	941200100016		Label	2		
2	537747520002		Load Capacity Diagram	1		
3	941200100010		Label	1		
4	532247020002		Label	1		For lithium battery
5	941200100009		Label	1		
6	941200300002		Label	1		
7	941200100013		Label	1		
8	941200300003		Label	1		Internal
9	532247020000		Label	2		
10	941200100011		Label	1		
11	537747520018		Label (ID plate with CE mark)	1		
12	941200100014		Label	1		
13	941200300001		Label	2		

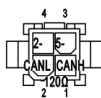
1=Supply as package; 2=Supply with limit; 3=Phasing out supply; 4=Supply as assembly; 5=Check other lists.

Appendix

01 Electrical circuit diagram (lead-acid battery) (537746045510)



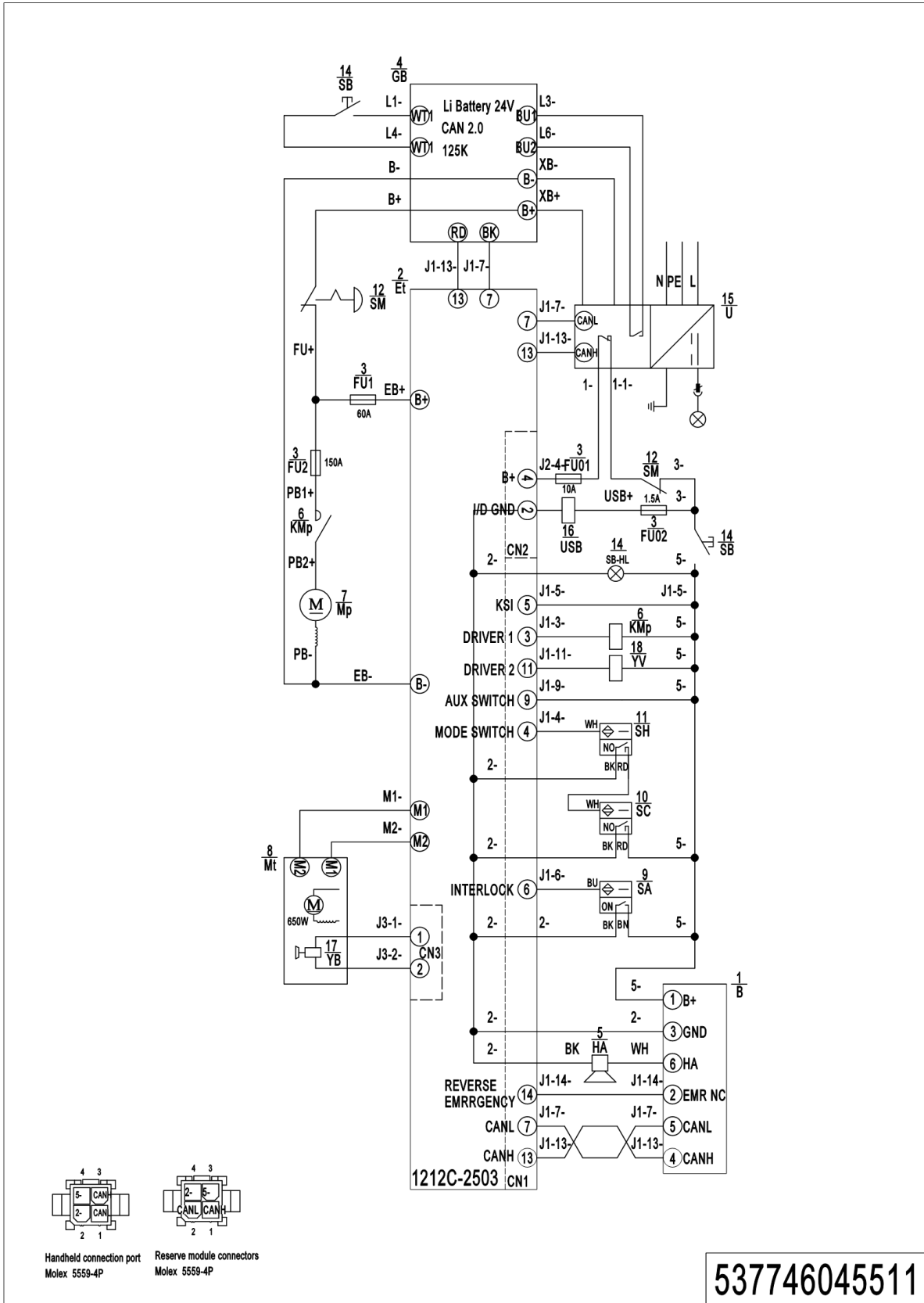
Handheld connection port
Molex 5559-4P



Reserve module connectors
Molex 5559-4P

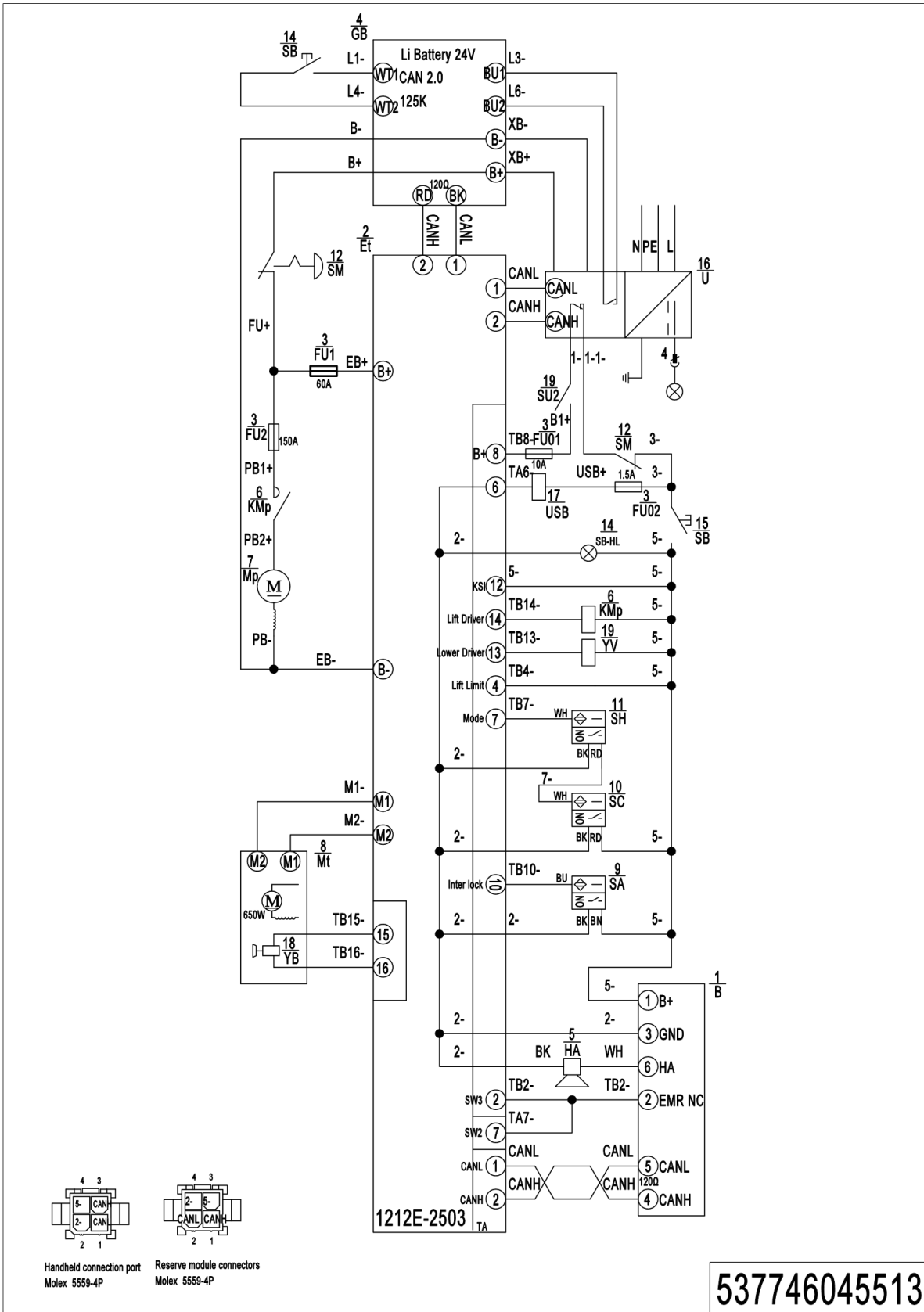
1=Supply as package; 2=Supply with limit; 3=Phasing out supply; 4=Supply as assembly; 5=Check other lists.

02 Electrical circuit diagram (Lithium battery) (537746045511)



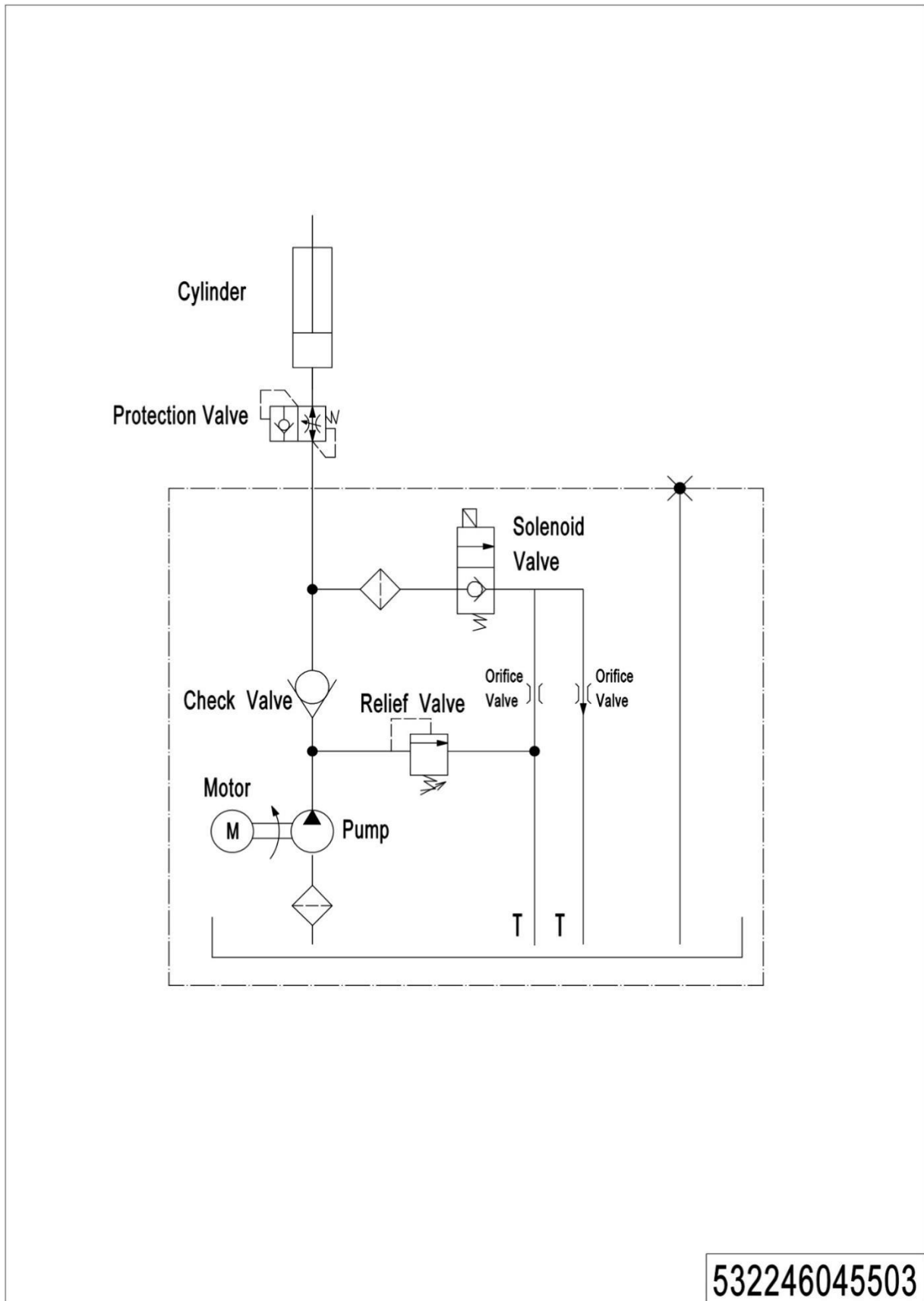
1=Supply as package; 2=Supply with limit; 3=Phasing out supply; 4=Supply as assembly; 5=Check other lists.

04 Electrical circuit diagram (Lithium battery, EN1175:2020) (537746045513)



1=Supply as package; 2=Supply with limit; 3=Phasing out supply; 4=Supply as assembly; 5=Check other lists.

05 Hydraulic circuit diagram (532246045503)



1=Supply as package; 2=Supply with limit; 3=Phasing out supply; 4=Supply as assembly; 5=Check other lists.

06 Easy worn parts list

No.	Item Code	Item Description	Qty.	Chapter/ Section/ Number
1	910700200019	Bearing	4	Chapter 4/05/2.01 Chapter 4/06/21.02
2	940300300009	WheelΦ84x70	2	Chapter 4/05/2.02
3	532998510000	Wheel	2	Chapter 4/05/2
4	532298510002	Seal Kit	1	Chapter 3/01/27.01
5	940300300018	WheelΦ100x40	2	Chapter 4/06/21.01
6	503598510003	Caster Assembly	2	Chapter 4/06/21
7	532211020003	Gas Spring	1	Chapter 4/01/10.3
8	940500200001	Bushing	2	Chapter 4/01/6
9	910700200020	Bearing	2	Chapter 3/01/12
10	920100100003	Fuse	1	Chapter 5/03/9
11	920100100007	Fuse	1	Chapter 5/03/7
12	920100200002	Fuse	1	Chapter 5/03/2

 1=Supply as package; 2=Supply with limit; 3=Phasing out supply; 4=Supply as assembly; 5=Check other lists.



MOBILE INDUSTRIES, INC.
3750B Laird Rd - Unit 2 & 3
Mississauga ON, L5L 0R6
Canada

Toll Free: 1 800 527 4612 • Local 905 279 5370
Email: info@mobilept.com

MOBILEPT.COM