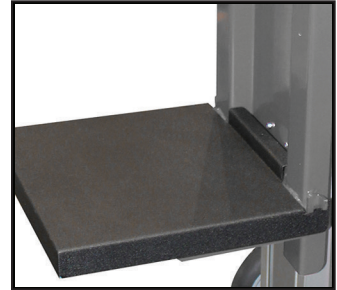




Pail retainer keeps loads secure



Optional platform for case packed goods



Lifting yoke holds pails in place



Safely handles 3 pails at a time

SHIPPING:

- Freight class: 175 • Freight Orientation: Upright
- Ship Dimensions: 36" Wide x 48" Long x 65.25" High (approx) with recommended packaging
- Ship Weight: 170 lbs (approx) with recommended packaging

MPL200

5-GALLON PAIL-LIFTER

- FEATURES:** Operates in narrow aisles/congested areas • Picks pails from floor or pallets • Can be used to load tinters, shakers, or vehicles
- Moves easily on any surface (indoors or out) • Portable/Lightweight - fits easily in any van/truck • Unit is free-standing even when loaded and raised • Lift controls are mounted to handle for easy use • Pail retainer clips hold pails steady during transport
 - 2 x 12V 7Ah Maintenance Free Rechargeable Batteries with a 110V Charger included

The MPL200 Pail Lifter is a powered elevating two-wheel hand truck specifically designed to transport, lift, and position 5-gallon plastic paint pails. The Pail Lifter features a unique lifting yoke that slides into position under the pail collar to securely support pails during transport and lifting. Pails can be raised to an under-clearance height of 35" allowing them to be stacked on top of one another, placed on counters, in paint tinters and shakers, on pallets and even into utility vans and pickup truck beds.

200  lbs CAPACITY (at 8" Load Center)

Lift Carriage Travel: 37" • Under Pail Clearance: 35"

Machine Dimensions (approx) without packaging: 20" Wide x 20" Long x 58.75" High • Machine Weight (approx) without packaging: 125 lbs

- Default Rise Time: 10 seconds (for 37.375" vertical travel) • Lifting Speed: 4" per second • Lifting Controls: Thumb Switch (on handle)

• Overall Hgt (Lowered/Raised): 52"/82" • Wheels: 8" Solid • Batteries: Maintenance-Free, Sealed Lead Acid (2) x 12V/7Ah • Frame: Aluminum 52" High x 30" Deep x 20" Wide

* This unit is for use ONLY with 5 gallon latex plastic pails. Not for use with metal pails. Return Policy: Machine is Non-returnable *